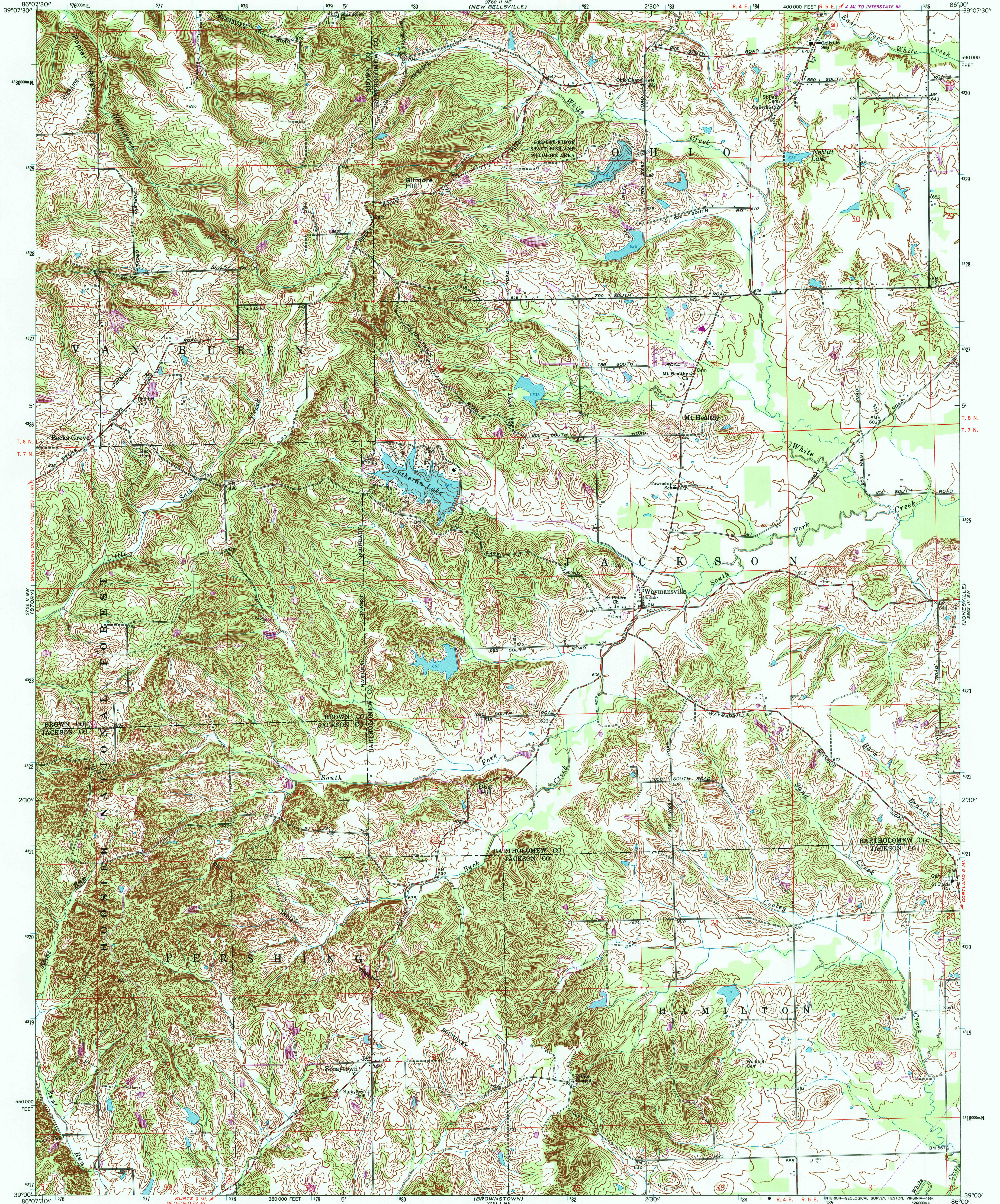
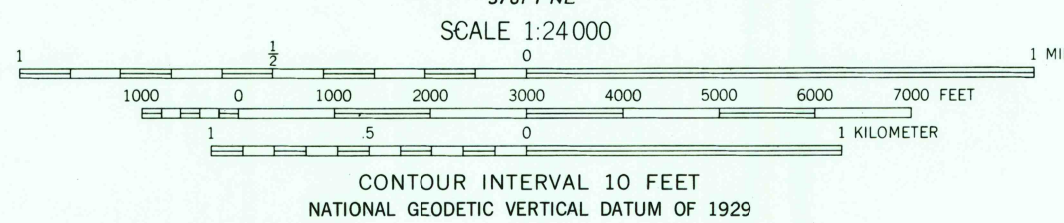
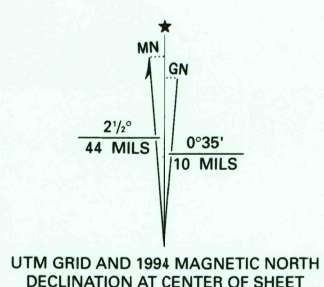


UNITED STATES
DEPARTMENT OF THE INTERIOR
GEOLOGICAL SURVEY

WAYMANSVILLE QUADRANGLE
INDIANA
7.5 MINUTE SERIES (TOPOGRAPHIC)



Produced by the U. S. Geological Survey
Revised in cooperation with State of Indiana Department
of Conservation
Control by USGS and NOS/NOAA
Planimetry by photogrammetric methods from aerial photographs
taken 1939. Topography by planetable surveys 1947. Revised 1962
North American Datum of 1927 (NAD 27). Projection and
10 000-foot ticks: Indiana coordinate system, east zone
(transverse Mercator)
Blue 1000-meter Universal Transverse Mercator grid ticks, zone 16
North American Datum of 1983 (NAD 83) is shown by dashed
corner ticks. The values of the shift between NAD 27 and NAD 83
for 7.5-minute intersections are obtainable from National Geodetic
Survey NADCON software
There may be private inholdings within the boundaries of
the National or State reservations shown on this map
Photosinspected from 1992 source; no major culture or drainage
changes observed. Names revised and boundaries verified 1994



THIS MAP COMPLIES WITH NATIONAL MAP ACCURACY STANDARDS
FOR SALE BY U.S. GEOLOGICAL SURVEY, DENVER, COLORADO 80225, OR RESTON, VIRGINIA 22092
AND INDIANA DEPARTMENT OF NATURAL RESOURCES, INDIANAPOLIS, INDIANA 46204
A FOLDER DESCRIBING TOPOGRAPHIC MAPS AND SYMBOLS IS AVAILABLE ON REQUEST

Revisions shown in purple compiled by the U. S. Forest Service
from aerial photographs taken 1976 and other source data
This information not field checked. Map edited 1981

ROAD CLASSIFICATION
Primary highway, hard surface
Secondary highway, hard surface
Light-duty road, hard or improved surface
Unimproved road
Interstate Route
U. S. Route
State Route



WAYMANSVILLE, IND.
39086-A1-TF-024
1962
PHOTOREVISED 1981
MINOR REVISION 1994
DMA 3762 II SE - SERIES V851

