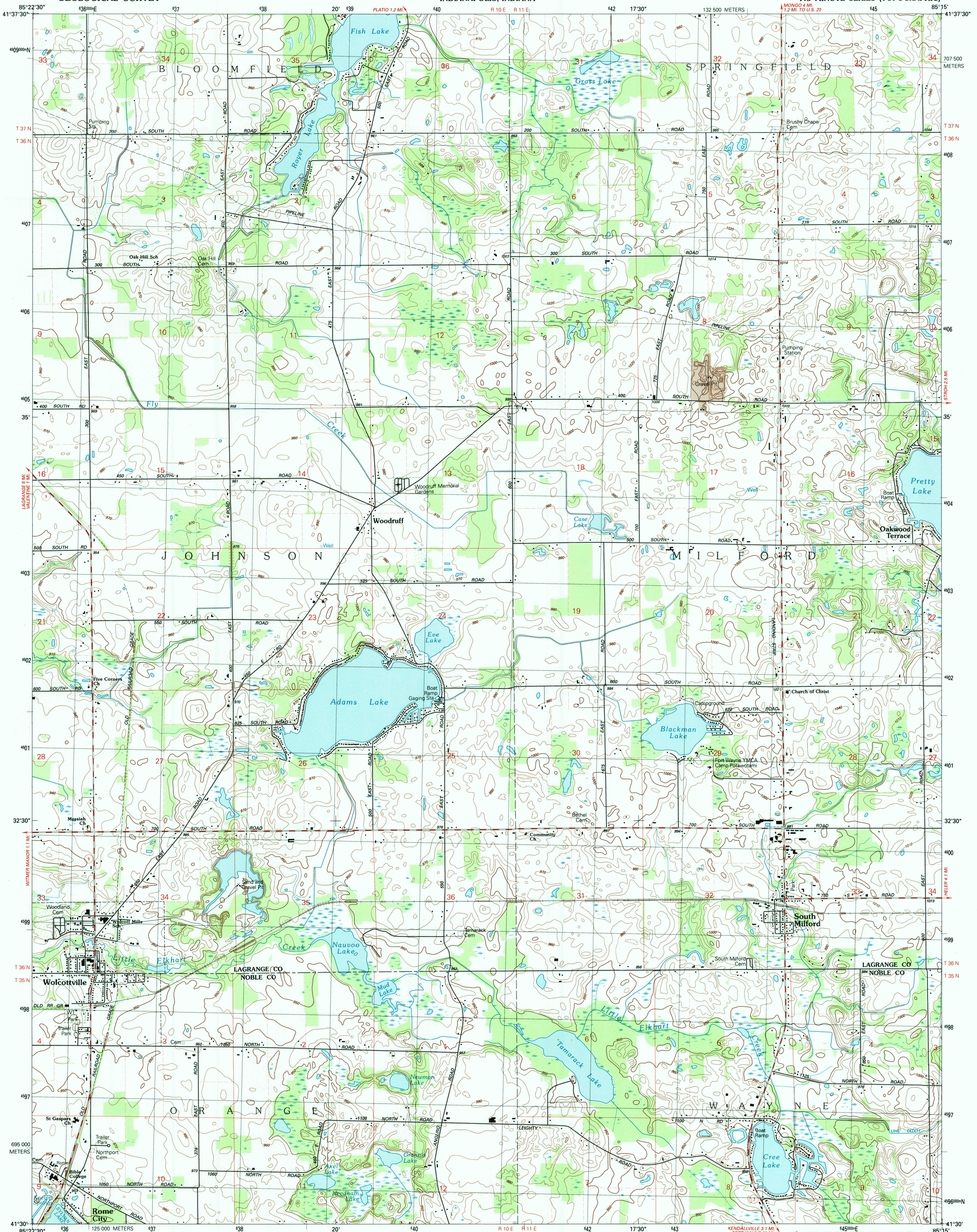


UNITED STATES
DEPARTMENT OF THE INTERIOR
GEOLOGICAL SURVEY

STATE OF INDIANA
DEPARTMENT OF NATURAL RESOURCES
INDIANAPOLIS, INDIANA

WOLCOTTVILLE QUADRANGLE
INDIANA
7.5 MINUTE SERIES (TOPOGRAPHIC)



Produced by the United States Geological Survey

Control by USGS and NOS/NOAA

Compiled from aerial photographs taken 1990

Field checked 1991. Map edited 1992

North American Datum of 1983 (NAD 83). Projection and

1 000-meter grid: Universal Transverse Mercator, zone 16

2 500-meter ticks: Indiana Coordinate System of 1983

east zone

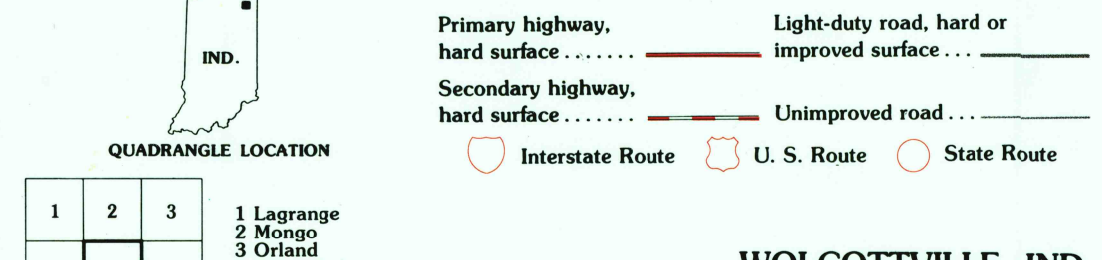
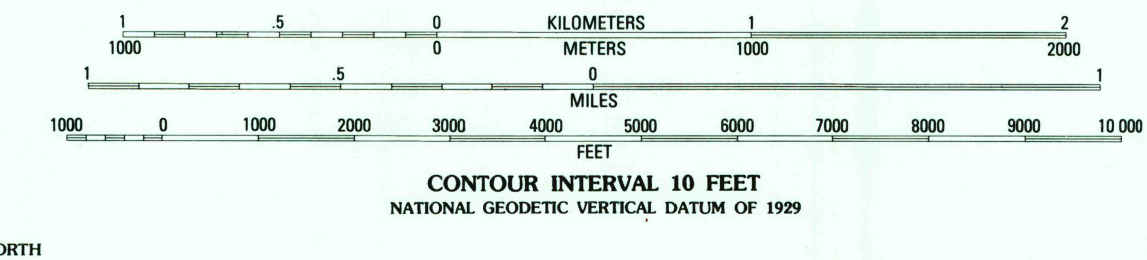
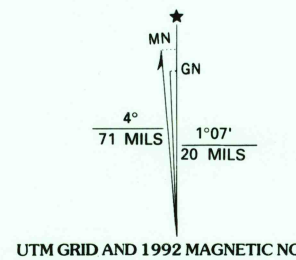
1927 North American Datum (NAD 27) is shown by dashed corner ticks

The values of the shift between NAD 83 and NAD 27 for 7.5-minute

intersections are given in USGS Bulletin 1875

Fine red dashed lines indicate selected fence and field lines where

generally visible on aerial photographs. This information is unchecked



1	2	3	1 Lagrange
4	5	2 Mongo	2 Orland
6	7	4 Oliver Lake	5 Stroh
		6 Albion	7 Kendallville
		8 Coruna	

ADJOINING 7.5 QUADRANGLE NAMES

WOLCOTTVILLE, IND.

41085-E3-TF-024

1992

DMA 3967 III SE-SERIES V8S1

