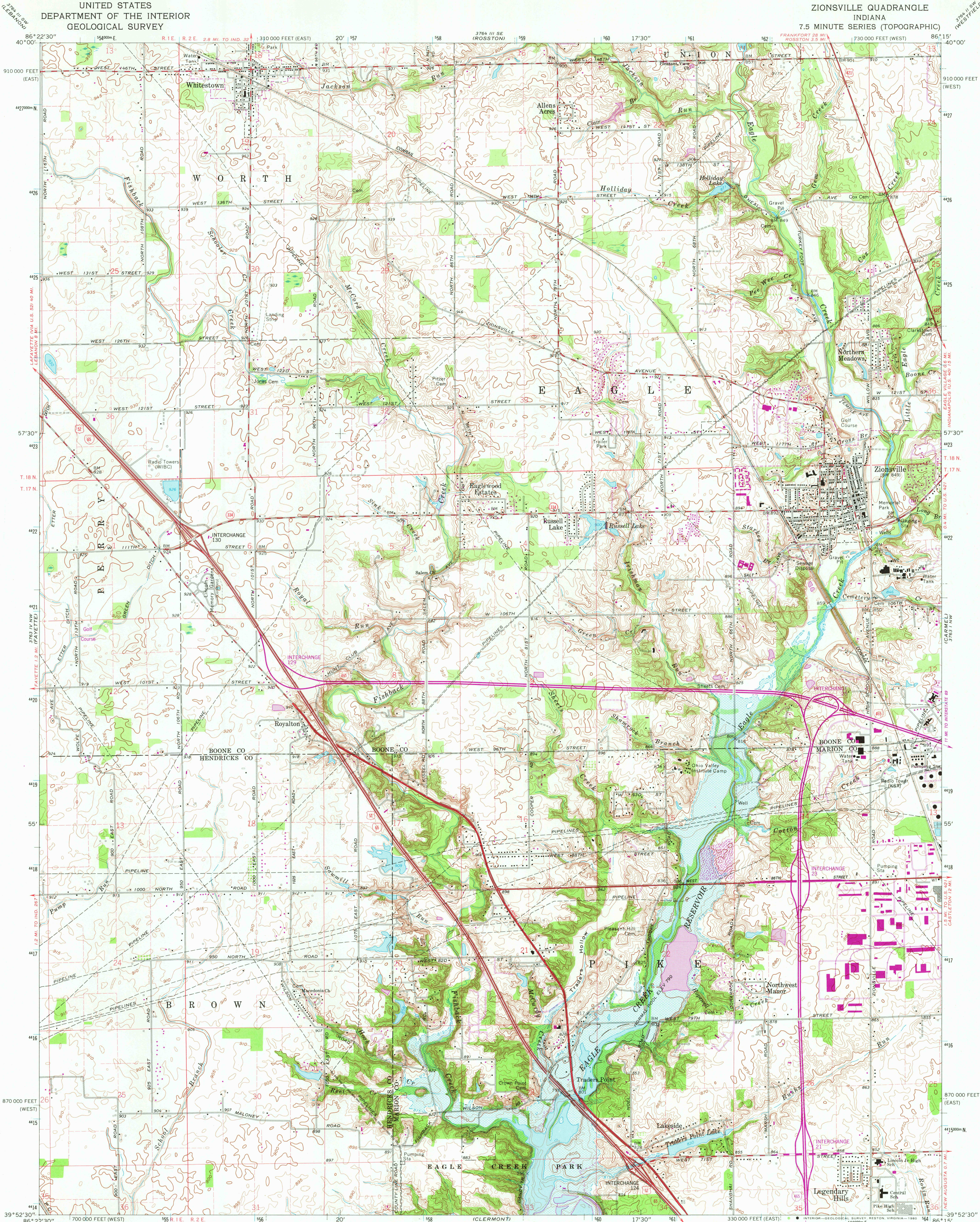


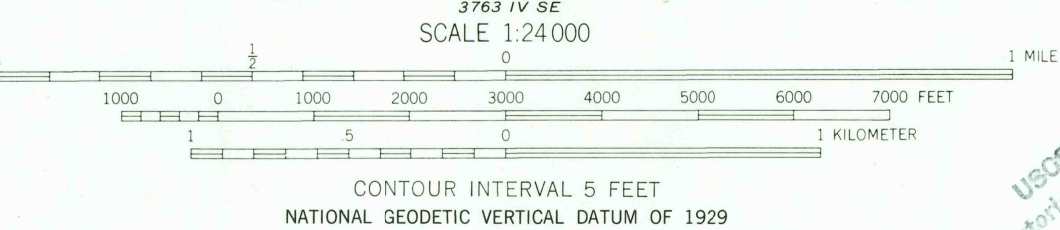
UNITED STATES
DEPARTMENT OF THE INTERIOR
GEOLOGICAL SURVEY

ZIONSVILLE QUADRANGLE
INDIANA
7.5 MINUTE SERIES (TOPOGRAPHIC)



Mapped, edited, and published by the Geological Survey
Revised in cooperation with State of Indiana
Department of Natural Resources
Control by USGS, USC&GS, and Indiana Flood Control
and Water Resources Commission
Planimetry by photogrammetric methods from aerial photographs taken
1952. Topography by pantable surveys 1953. Revised 1966
Polyconic projection
10,000-foot grids based on Indiana coordinate system,
west and east zones
1000-meter Universal Transverse Mercator grid ticks,
zone 16, shown in blue 1927 North American Datum
To place on the predicted North American Datum 1983
move the projection lines 1 meter south
as shown by dashed corner ticks

Area covered by dashed light-blue pattern is subject
to controlled inundation
There may be private inholdings within the boundaries
of the National or State reservations shown on this map



THIS MAP COMPLIES WITH NATIONAL MAP ACCURACY STANDARDS
FOR SALE BY U.S. GEOLOGICAL SURVEY, RESTON, VIRGINIA 22092
AND INDIANA DEPARTMENT OF NATURAL RESOURCES, INDIANAPOLIS, INDIANA 46204
A FOLDER DESCRIBING TOPOGRAPHIC MAPS AND SYMBOLS IS AVAILABLE ON REQUEST

Fine red dashed lines indicate selected fence and field lines where
generally visible on aerial photographs. This information is unchecked
Revisions shown in purple compiled in cooperation with State of
Indiana agencies from aerial photographs taken 1977 and other
source data. This information not field checked. Map edited 1980

ROAD CLASSIFICATION
Heavy-duty ——— Light-duty ———
Medium-duty ——— Unimproved dirt ———
Interstate Route U.S. Route State Route

ZIONSVILLE, IND.
N3952.5—W8615.7.5

1966
PHOTOREVISED 1980
DMA 3763 IV NE—SERIES V851

DEC 16 1980
1950