

Vincennes

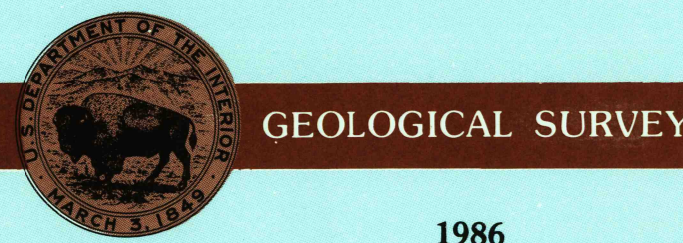
INDIANA-ILLINOIS

1:100 000-scale *metric*
topographic map



30 X 60 MINUTE QUADRANGLE
SHOWING

- Contours and elevations in meters
- Highways, roads and other manmade structures
- Water features
- Woodland areas
- Geographic names



Produced by the United States Geological Survey

Compiled from USGS 1:24 000-scale topographic maps dated 1964-1980. Planimetry revised from aerial photographs taken 1984 and other source data. Revised information not field checked. Map edited 1986.

Projection and 10 000-meter grid, zone 16
Universal Transverse Mercator
25 000-foot grid ticks based on Indiana coordinate system, west zone and Illinois coordinate system east zone. 1927 North American Datum
To place on the predicted North American Datum 1983 move the projection lines 2 meters south and 2 meters east
There may be private inholdings within the boundaries of the National or State reservations shown on this map

CONTOUR INTERVAL 10 METERS
NATIONAL GEODETIC VERTICAL DATUM OF 1929
ELEVATIONS SHOWN TO THE NEAREST METER

THIS MAP COMPLIES WITH NATIONAL MAP ACCURACY STANDARDS

CONVERSION TABLE		DECLINATION DIAGRAM		ADJOINING MAPS			
Meters	Feet			1	2	3	
1	3.2808	<p>UTM grid convergence (GM) and 1983 magnetic declination (MD) at center of map. Diagram is approximate.</p>		4	5	6	
2	6.5617			7	8	9	
3	9.8425			10	11	12	
4	13.1234			13	14	15	
5	16.4042			16	17	18	
6	19.6850			19	20	21	
7	22.9659			22	23	24	
8	26.2467			25	26	27	
9	29.5275			28	29	30	
10	32.8084			31	32	33	
To convert meters to feet multiply by 3.2808				34	35	36	
To convert feet to meters multiply by 0.3048				37	38	39	

FOR SALE BY U. S. GEOLOGICAL SURVEY, DENVER, COLORADO 80225
OR RESTON, VIRGINIA 22092

USGS WMD HISTORICAL MAP

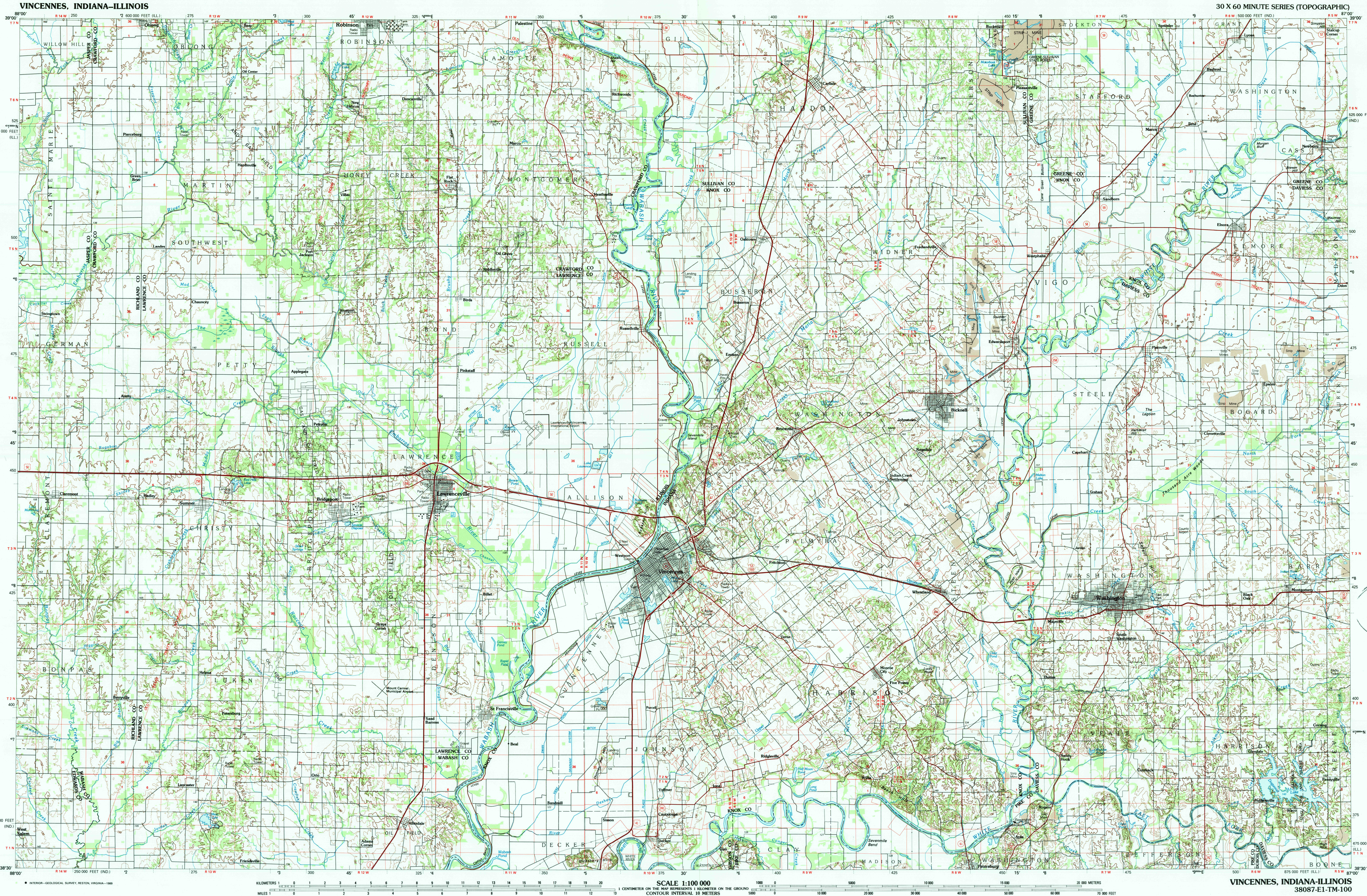
OCT - 6 1989

REC'D FILE COPY

Topographic Map Symbols

Primary highway, hard surface	
Secondary highway, hard surface	
Light duty road, principal street, hard or improved surface	
Other road or street; trail	
Route marker: Interstate; U. S.; State	
Railroad: standard gage; narrow gage	
Bridge: overpass; underpass	
Tunnel; road; railroad	
Built up area; locality; elevation	
Airport; landing field; landing strip	
National boundary	
State boundary	
County boundary	
National or State reservation boundary	
Land grant boundary	
U. S. public lands survey: range, township; section	
Range, township; section line: protracted	
Power transmission line; pipeline	
Dam, dam with lock	
Cemetery; building	
Windmill; water well; spring	
Mine shaft; adit or cave; mine, quarry; gravel pit	
Campground; picnic area; U. S. location monument	
Radio; cliff dwelling	
Distorted surface: strip mine, lava, sand	
Contours: index; intermediate; supplementary	
Bathymetric contours: index; intermediate	
Stream, lake; perennial; intermittent	
Reeds, large and small; lake, large and small	
Area to be submerged; marsh, swamp	
Land subject to controlled inundation; woodland	
Scrub; mangrove	
Orchard; vineyard	

A pamphlet describing topographic maps is available on request



VINCENNES, INDIANA-ILLINOIS

30 X 60 MINUTE SERIES (TOPOGRAPHIC)

• INTERIOR—GEOLOGICAL SURVEY, RESTON, VIRGINIA—1989

KILOMETERS

0 1 2 3 4 5 6 7 8 9 10 11 12 13 14 15 16 17 18 19 20

SCALE 1:100 000

1 CENTIMETER ON THE MAP REPRESENTS 1 KILOMETER ON THE GROUND
CONTOUR INTERVAL 10 METERS

0 1 2 3 4 5 6 7 8 9 10 11 12 13 14 15 16 17 18 19 20

0 1 2 3 4 5 6 7 8 9 10 11 12 13 14 15 16 17 18 19 20

0 1 2 3 4 5 6 7 8 9 10 11 12 13 14 15 16 17 18 19 20

VINCENNES, INDIANA-ILLINOIS

38087-E1-TM-100

1986