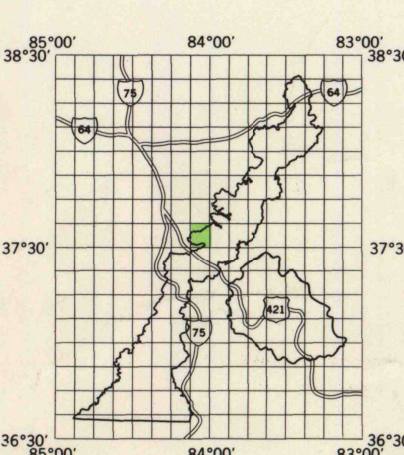
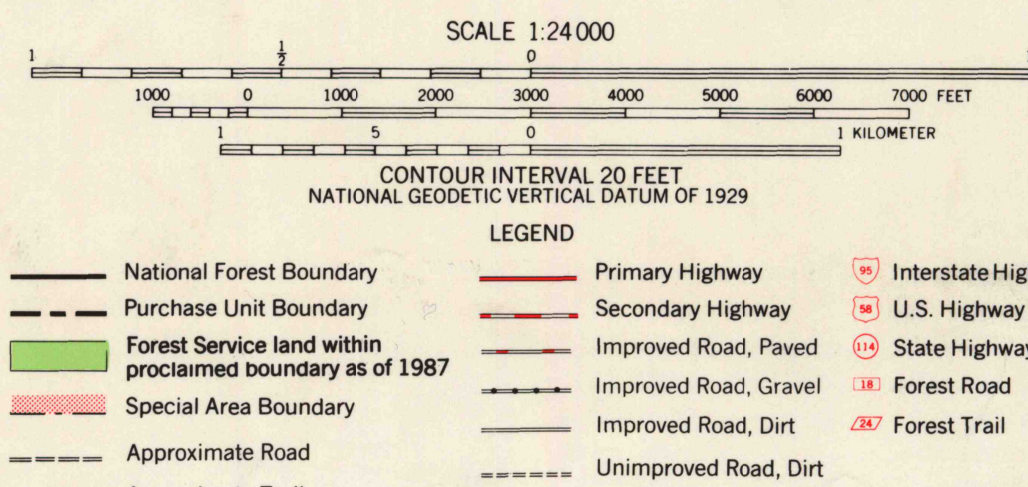
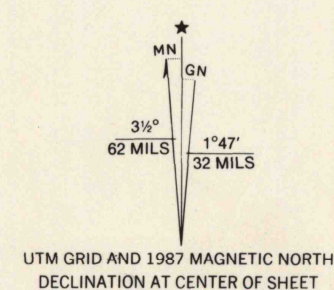




Base map prepared by the Geological Survey  
Control by USGS, USC&GS, and USFS  
Topography from aerial photographs by KEK plotter  
Aerial photographs taken 1950. Field check 1952  
Polyconic projection. 1927 North American datum  
10,000-foot grid based on Kentucky coordinate system,  
south zone  
1000-meter Universal Transverse Mercator grid ticks,  
zone 16.  
Modification to USGS base map by the Geometrics Service  
Center from 1985 aerial photography and 1987 correction  
guides furnished by the Southern Region  
FOREST SUPERVISOR'S HEADQUARTERS  
WINCHESTER KENTUCKY



ALCORN, KY.  
N7330-W8400/7.5  
1952