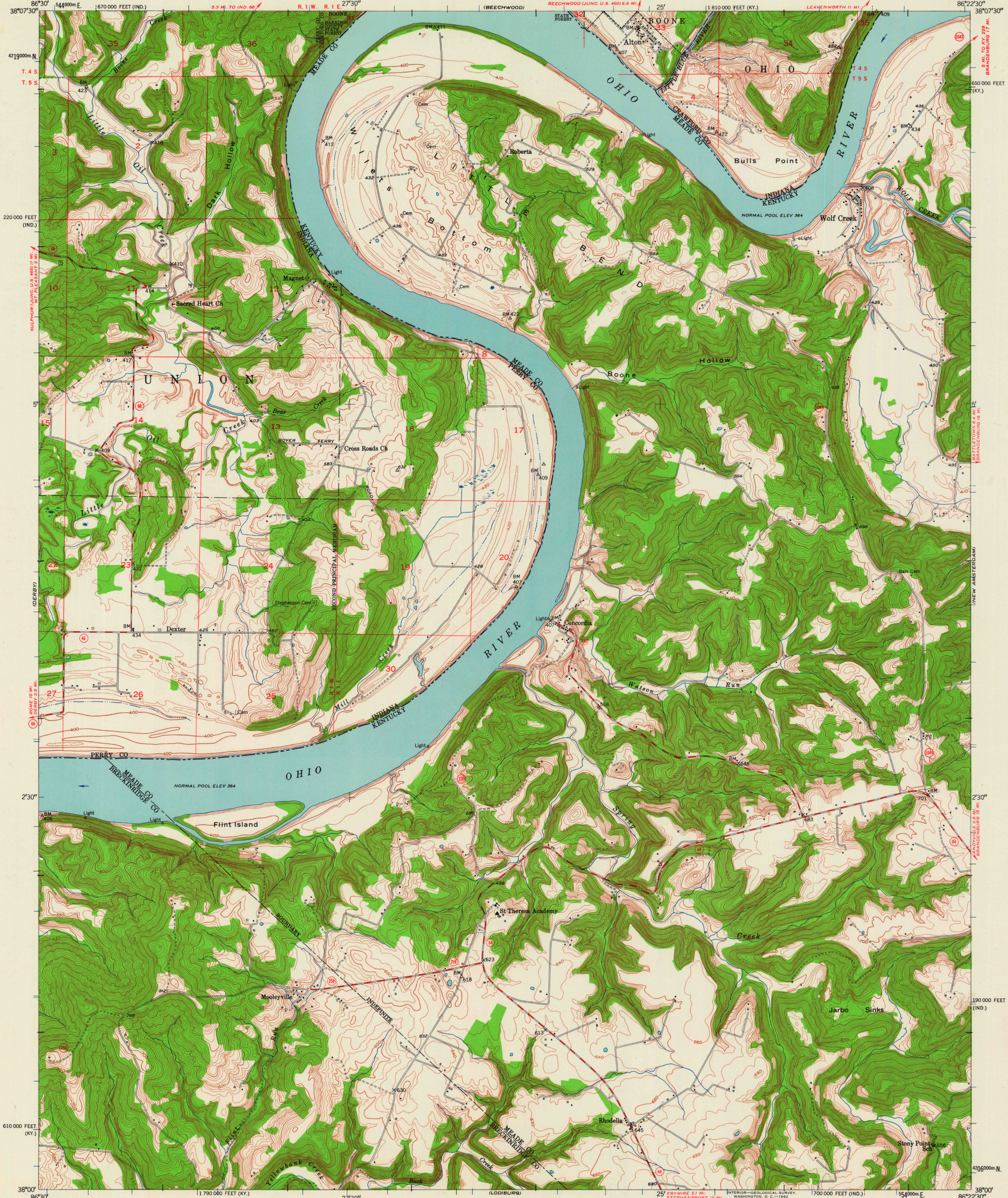


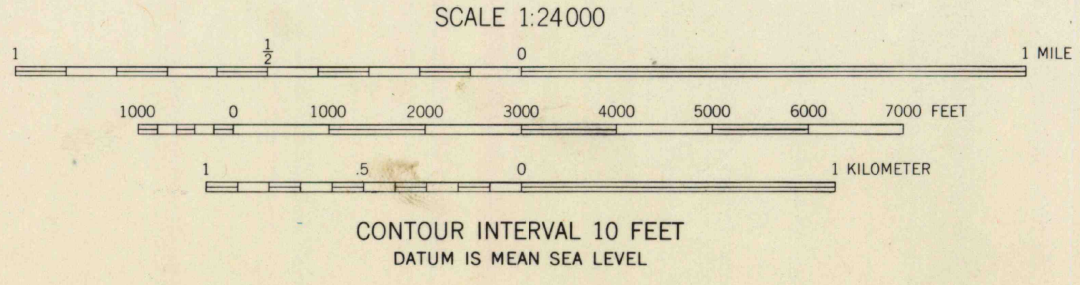
UNITED STATES
DEPARTMENT OF THE INTERIOR
GEOLOGICAL SURVEY

ALTON QUADRANGLE
KENTUCKY-INDIANA
7.5 MINUTE SERIES (TOPOGRAPHIC)
SW/4 PECKENPAUGH 15' QUADRANGLE



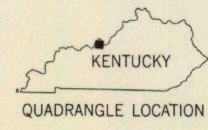
Mapped, edited, and published by the Geological Survey
Control by USGS, and USC&GS, and USCE
Topography from aerial photographs by stereoplanigraph
Aerial photographs taken 1947 and 1948. *Field check 1950
Polyconic projection. 1927 North American datum
10,000-foot grids based on Kentucky coordinate system,
south zone, and Indiana coordinate system, west zone
1000-meter Universal Transverse Mercator grid ticks,
zone 16, shown in blue

TRUE NORTH
MAGNETIC NORTH
APPROXIMATE MEAN
DECLINATION, 1950



USGS
Historical File
Topographic Division

ROAD CLASSIFICATION
Medium-duty ——— Light-duty ———
Unimproved dirt ———
State Route



THIS MAP COMPLIES WITH NATIONAL MAP ACCURACY STANDARDS
FOR SALE BY U.S. GEOLOGICAL SURVEY, WASHINGTON 25, D. C.
INDIANA DEPARTMENT OF CONSERVATION, INDIANAPOLIS, INDIANA,
KENTUCKY GEOLOGICAL SURVEY, LEXINGTON, KENTUCKY
AND KENTUCKY DEPARTMENT OF COMMERCE, FRANKFORT, KENTUCKY
A FOLDER DESCRIBING TOPOGRAPHIC MAPS AND SYMBOLS IS AVAILABLE ON REQUEST

ALTON, KY.-IND.
SW/4 PECKENPAUGH 15' QUADRANGLE
N3800—W8622.5/7.5

1950

U.S.G.S.
FILE COPY
TOPOGRAPHIC DIVISION

1495