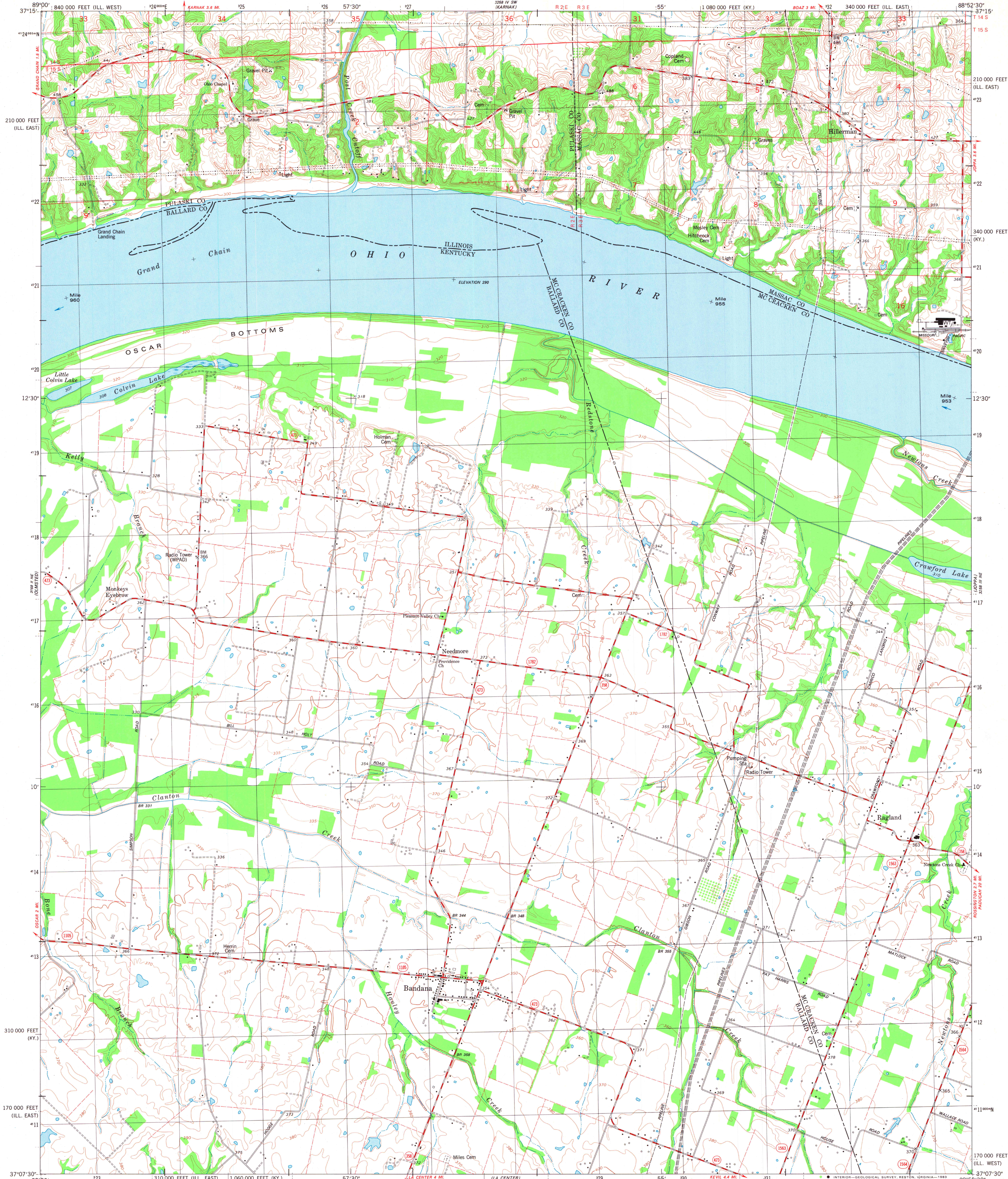


UNITED STATES
DEPARTMENT OF THE INTERIOR
GEOLOGICAL SURVEY

STATE OF KENTUCKY
KENTUCKY GEOLOGICAL SURVEY
UNIVERSITY OF KENTUCKY

BANDANA QUADRANGLE
KENTUCKY-ILLINOIS
7.5 MINUTE SERIES (TOPOGRAPHIC)
NW 4 LA CENTER 15' QUADRANGLE



Mapped, edited, and published by the Geological Survey
Control by USGS, NOS/NOAA, and USCE

Planimetry of Kentucky area by photogrammetric methods from aerial
photographs taken 1952. Topography by planimetric surveys 1954

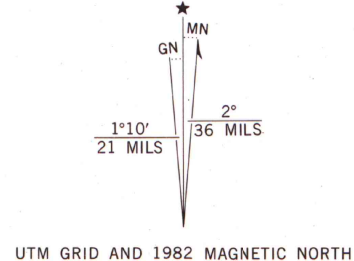
Topography of Illinois area by photogrammetric methods from aerial
photographs taken 1965. Field checked 1966. Revised from aerial
photographs taken 1978. Field checked 1978. Map edited 1982

Polyconic projection. 10,000-foot grid ticks based on Kentucky
coordinate system, south zone, and Illinois coordinate system,
west and east zones. 1000-meter Universal Transverse Mercator
grid, zone 16. 1927 North American Datum

To place on the predicted North American Datum 1983
move the projection lines 4 meters south and
6 meters east as shown by dashed corner ticks

Fine red dashed lines indicate selected fence and field lines where
generally visible on aerial photographs. This information is unchecked

The State boundary as shown represents the approximate position of the low
water line as determined from U. S. Corps of Engineers, Ohio River Charts
surveyed 1912, and supplementary information



SCALE 1:24 000

CONTOUR INTERVAL 10 FEET
DOTTED LINES REPRESENT 5-FOOT CONTOURS
NATIONAL GEODETIC VERTICAL DATUM OF 1929

THIS MAP COMPLIES WITH NATIONAL MAP ACCURACY STANDARDS
FOR SALE BY U. S. GEOLOGICAL SURVEY, RESTON, VIRGINIA 22092,
KENTUCKY GEOLOGICAL SURVEY, LEXINGTON, KENTUCKY 40506,
KENTUCKY DEPARTMENT OF COMMERCE, FRANKFORT, KENTUCKY 40601,
AND ILLINOIS GEOLOGICAL SURVEY, CHAMPAIGN, ILLINOIS 61820

A FOLDER DESCRIBING TOPOGRAPHIC MAPS AND SYMBOLS IS AVAILABLE ON REQUEST

ROAD CLASSIFICATION

Primary highway,
hard surface

Secondary highway,
hard surface

Unimproved road

Interstate Route

U. S. Route

State Route

Light-duty road, hard or
improved surface

Unimproved road

Interstate Route

U. S. Route

State Route

BANDANA, KY.-ILL.

NW 4 LA CENTER 15' QUADRANGLE
N37°07.5'-W88°52.7'

1982

DMA 3258 III NW-SERIES 9B53
ARTHUR H. ROBINSON MAP LIBRARY
University of Wisconsin-Madison

A.H. ROBINSON
MAP LIBRARY

OCT - 6 1983

University of Wisconsin
Madison