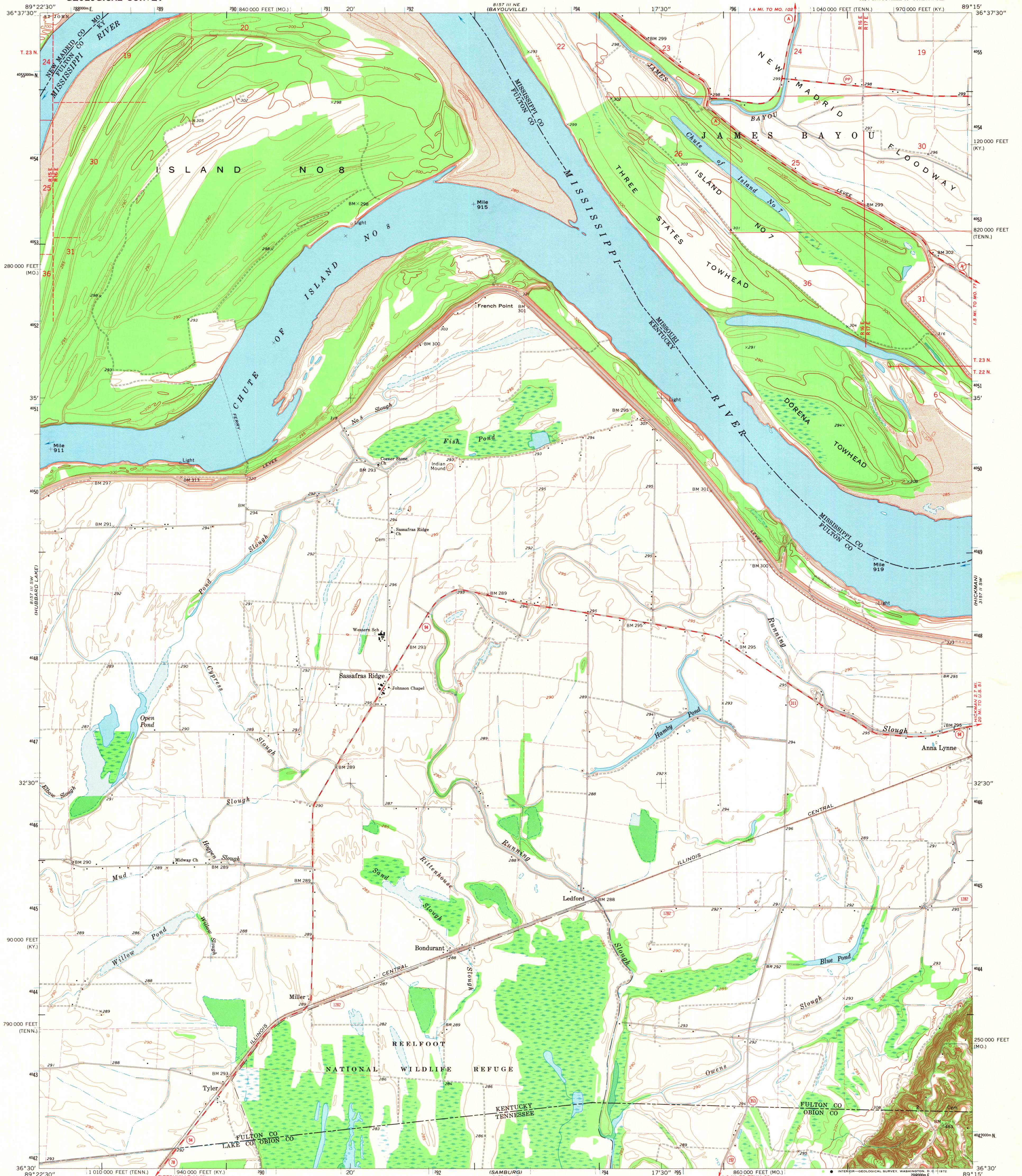


UNITED STATES  
DEPARTMENT OF THE INTERIOR  
GEOLOGICAL SURVEY

BONDURANT QUADRANGLE  
KENTUCKY—MISSOURI—TENNESSEE  
7.5 MINUTE SERIES (TOPOGRAPHIC)  
SE/4 BAYOUVILLE 15' QUADRANGLE



Mapped, edited, and published by the Geological Survey  
in cooperation with the State of Kentucky  
Control by USGS, USC&GS, and USCE  
Planimetry by photogrammetric methods from aerial photographs  
taken 1950. Topography by planetable surveys 1950-1951  
Revised from aerial photographs taken 1967. Field checked 1969  
Polyconic projection. 1927 North American datum  
10,000-foot grids based on Kentucky coordinate system, south zone,  
Missouri coordinate system, east zone, and Tennessee coordinate system  
1000-meter Universal Transverse Mercator grid ticks,  
zone 16, shown in blue  
Fine red dashed lines indicate selected fence and field lines where  
generally visible on aerial photographs. This information is unchecked

SCALE 1:24,000  
CONTOUR INTERVAL 5 FEET  
DATUM IS MEAN SEA LEVEL  
THIS MAP COMPLIES WITH NATIONAL MAP ACCURACY STANDARDS  
FOR SALE BY U.S. GEOLOGICAL SURVEY, DENVER, COLORADO 80225, OR WASHINGTON, D.C. 20242,  
KENTUCKY GEOLOGICAL SURVEY, LEXINGTON, KENTUCKY 40506,  
KENTUCKY DEPARTMENT OF COMMERCE, FRANKFORT, KENTUCKY 40601,  
MISSOURI GEOLOGICAL SURVEY, ROLLA, MISSOURI 65401,  
AND TENNESSEE DIVISION OF GEOLOGY, NASHVILLE, TENNESSEE 37219  
A FOLDER DESCRIBING TOPOGRAPHIC MAPS AND SYMBOLS IS AVAILABLE ON REQUEST

ROAD CLASSIFICATION  
Secondary highway, all weather, Light-duty road, all weather,  
hard surface Improved surface  
Unimproved road, fair or dry weather  
State Route  
BONDURANT, KY—MO.—TENN.  
SE/4 BAYOUVILLE 15' QUADRANGLE  
N3630—W8915/7.5  
1969  
AMS 3157 III SE—SERIES V853

MAP AND AIR PHOTO  
LIBRARY  
FEB 15 1973