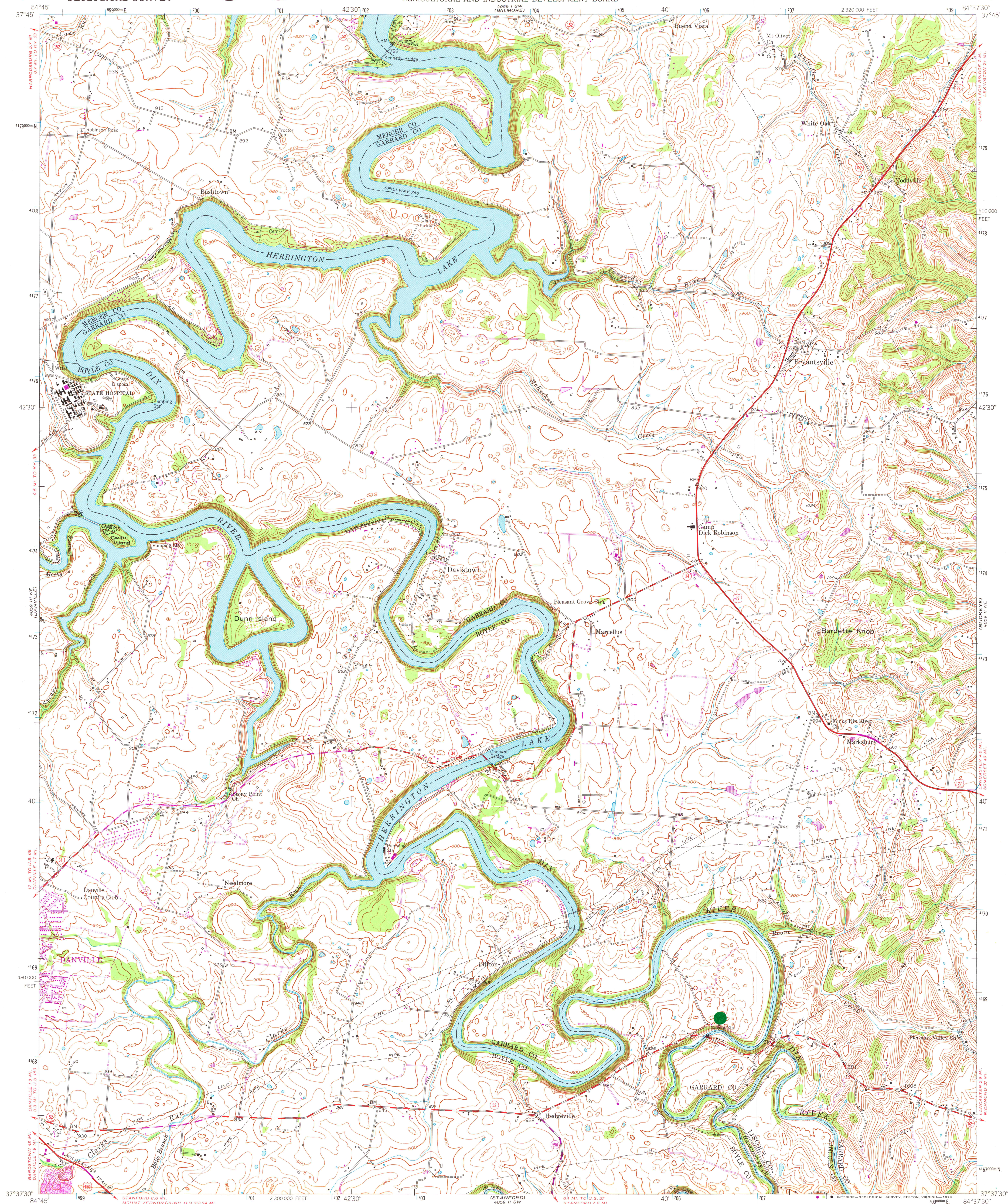


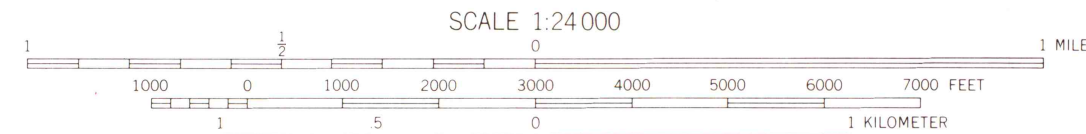
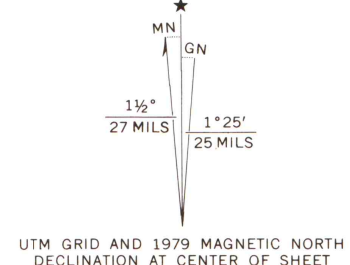
4059 1/2 SE
LITTLE PICKMAN



Mapped, edited, and published by the Geological Survey

Control by USGS and USC&GS
Topography from aerial photographs by multiplex methods
Aerial photographs taken 1950. Field check 1952
Polyconic projection. 1927 North American datum
10,000-foot grid based on Kentucky coordinate system,
south zone
1000-meter Universal Transverse Mercator grid ticks,
zone 16, shown in blue

Revisions shown in purple compiled from aerial
photographs taken 1976 and other source data.
Contours adjusted adjacent to certain photo-
revised hydrographic features. This information
not field checked. Map edited 1979



CONTOUR INTERVAL 20 FEET
NATIONAL GEODETIC VERTICAL DATUM OF 1929

THIS MAP COMPLIES WITH NATIONAL MAP ACCURACY STANDARDS
FOR SALE BY U.S. GEOLOGICAL SURVEY, RESTON, VIRGINIA 22092
KENTUCKY GEOLOGICAL SURVEY, LEXINGTON, KENTUCKY 40506
AND KENTUCKY DEPARTMENT OF COMMERCE, FRANKFORT, KENTUCKY 40601
A FOLDER DESCRIBING TOPOGRAPHIC MAPS AND SYMBOLS IS AVAILABLE ON REQUEST

ROAD CLASSIFICATION
Heavy-duty 4 LANE 6 LANE Light-duty
Medium-duty 4 LANE 6 LANE Unimproved dirt
U.S. Route State Route

MAP AND AIR PHOTO
LIBRARY

SEP 17 1979 N3737.5-W8437.5/7.5

1952
University of Wisconsin
Madison
PHOTOREVISED 1979
AMS 4059 1/2 NW-SERIES V853