

(COUNTY)
1:62,500

UNITED STATES
DEPARTMENT OF THE INTERIOR
GEOLOGICAL SURVEY

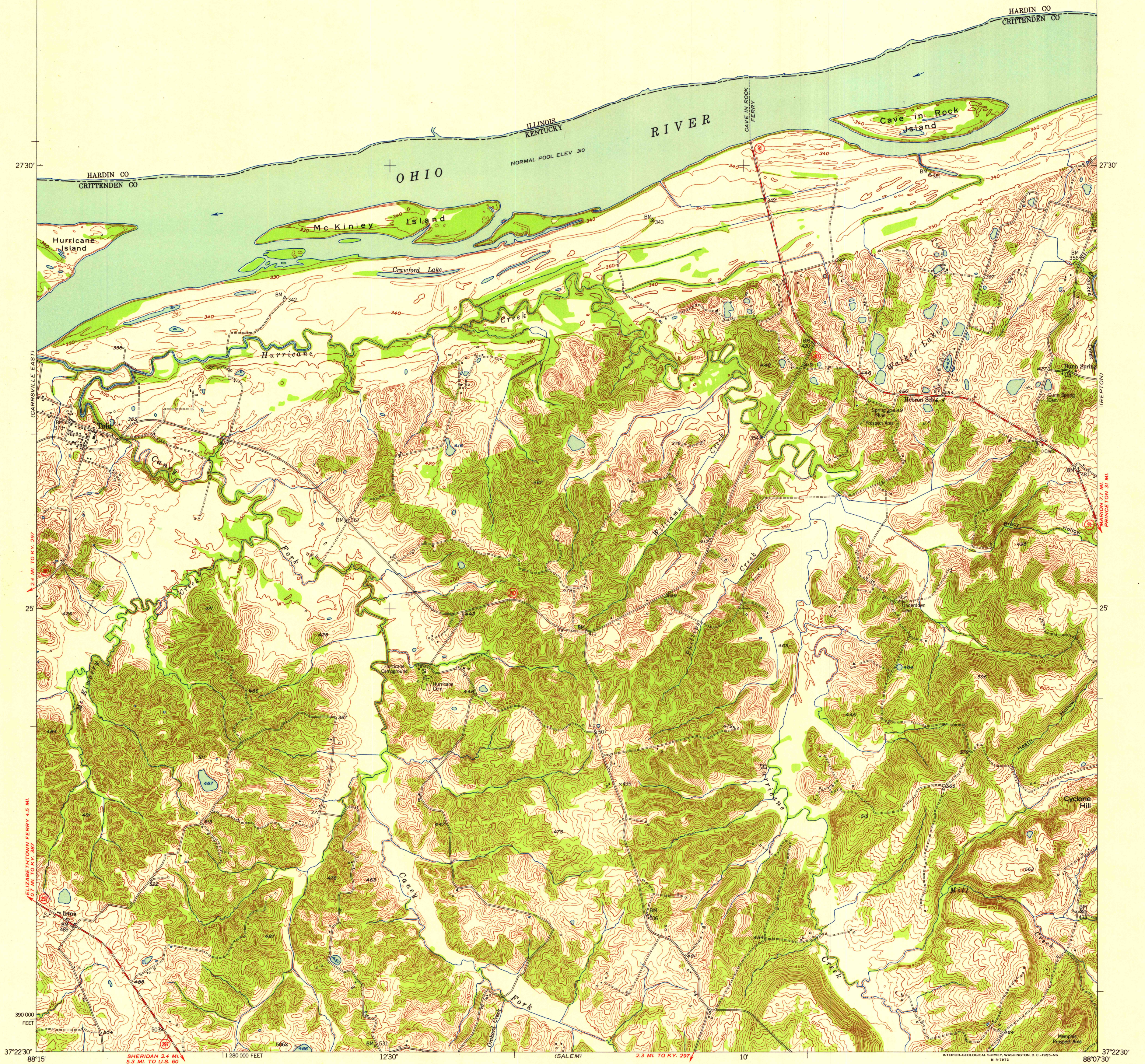
STATE OF KENTUCKY
AGRICULTURAL AND INDUSTRIAL DEVELOPMENT BOARD
(SHAWNEETOWN 1:62,500)

CAVE IN ROCK QUADRANGLE
KENTUCKY-ILLINOIS
7.5 MINUTE SERIES (TOPOGRAPHIC)
NW 1/4 CAVE IN ROCK 15' QUADRANGLE
1:310,000 FEET

(DEPTOVEN)

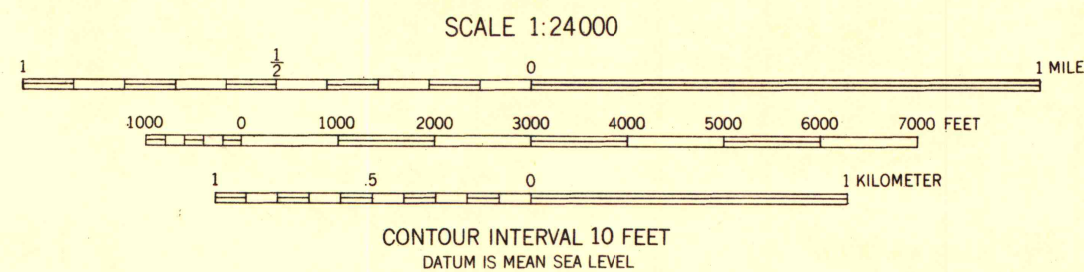
430 000
FEET

This area is covered by 1:62500 scale map
of Cave in Rock 15 minute quadrangle



Maped, edited, and published by the Geological Survey
Control by USGS, USC&GS, and USCE
Topography from aerial photographs by Kelsh plotter
Aerial photographs taken 1952. Field check 1954
Polyconic projection. 1927 North American datum
10,000-foot grid based on Kentucky coordinate system,
south zone

TRUE NORTH
MAGNETIC NORTH
APPROXIMATE MEAN
DECLINATION, 1954



ROAD CLASSIFICATION
Heavy-duty... Light-duty...
Medium-duty... Unimproved dirt...
U.S. Route... State Route...



THIS MAP COMPLIES WITH NATIONAL MAP ACCURACY STANDARDS
FOR SALE BY U.S. GEOLOGICAL SURVEY, WASHINGTON 25, D.C.
AND KENTUCKY AGRICULTURAL AND INDUSTRIAL DEVELOPMENT BOARD, FRANKFORT, KENTUCKY
A FOLDER DESCRIBING TOPOGRAPHIC MAPS AND SYMBOLS IS AVAILABLE ON REQUEST

UNIVERSITY OF WISCONSIN
Department of Geography

CAVE IN ROCK, KY. 411
NW 1/4 CAVE IN ROCK 15' QUADRANGLE
N3722.5-W8807.5/7.5
1954