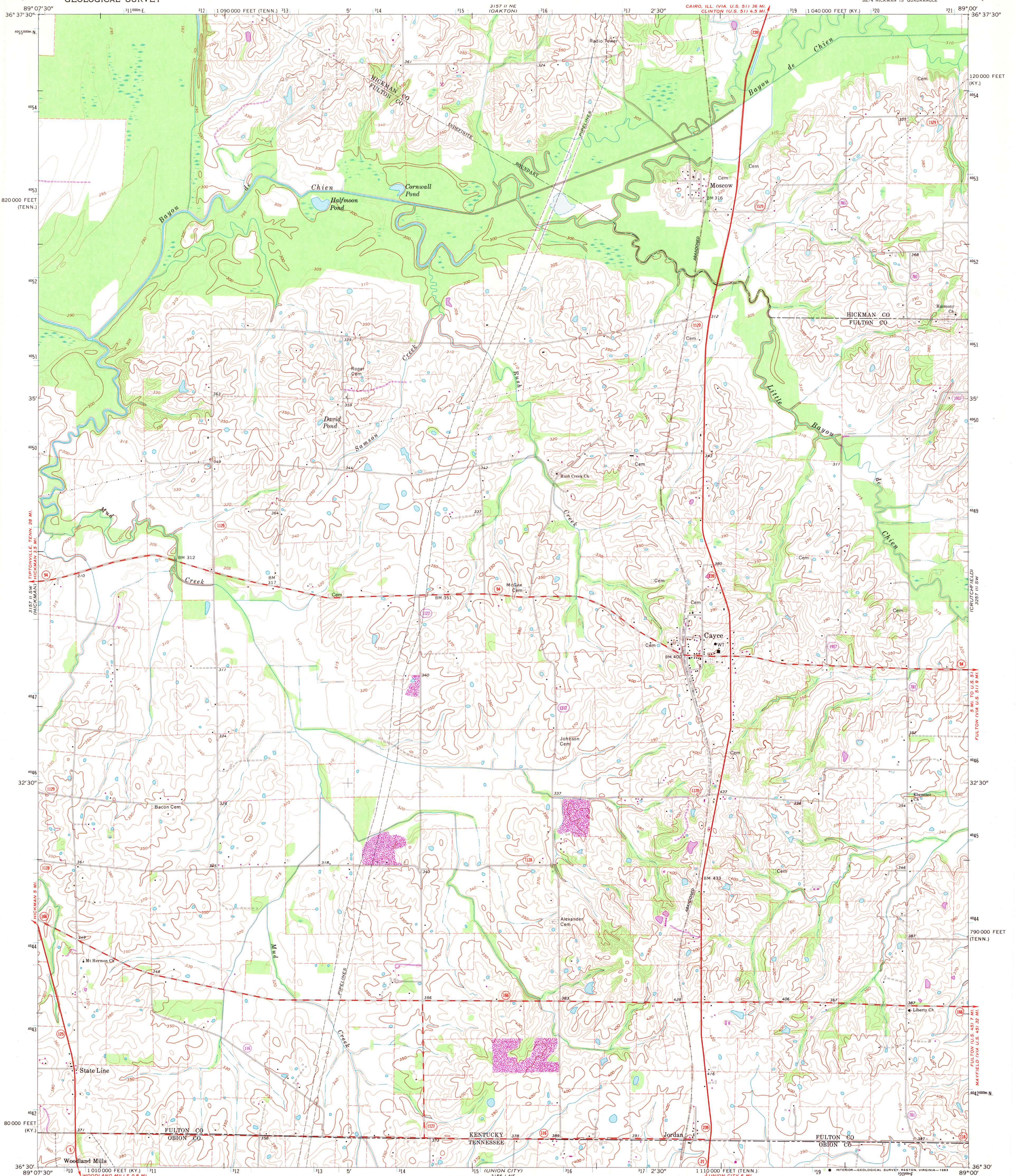


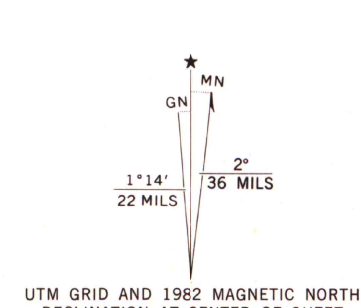
UNITED STATES
DEPARTMENT OF THE INTERIOR
GEOLOGICAL SURVEY

CAYCE QUADRANGLE
KENTUCKY-TENNESSEE
7.5 MINUTE SERIES (TOPOGRAPHIC)



Maped, edited, and published by the Geological Survey in cooperation with the State of Kentucky
Control by USGS and NOS/NOAA
Planimetry by photogrammetric methods from aerial photographs taken 1950. Topography by plane-table surveys 1951. Revised from aerial photographs taken 1969. Field checked 1970.
Polyconic projection. 10,000-foot grid ticks based on Kentucky coordinate system, south zone and Tennessee coordinate system 1000-meter Universal Transverse Mercator grid ticks, zone 16, shown in blue. 1927 North American Datum. To place on the predicted North American Datum 1983 move the projection lines 5 meters south and 6 meters east as shown by dashed corner ticks.
Fine red dashed lines indicate selected fence and field lines where generally visible on aerial photographs. This information is unchecked.

Revisions shown in purple and woodland compiled in cooperation with State of Kentucky agencies from aerial photographs taken 1981 and other sources. Contours adjusted adjacent to certain photorevised hydrographic features. This information not field checked. Map edited 1982.



THIS MAP COMPLIES WITH NATIONAL MAP ACCURACY STANDARDS
FOR SALE BY U.S. GEOLOGICAL SURVEY, RESTON, VIRGINIA 22092,
KENTUCKY GEOLOGICAL SURVEY, LEXINGTON, KENTUCKY 40506,
KENTUCKY DEPARTMENT OF COMMERCE, FRANKFORT, KENTUCKY 40601,
AND TENNESSEE DEPARTMENT OF CONSERVATION, DIVISION OF GEOLOGY, NASHVILLE, TENN. 37219
A FOLDER DESCRIBING TOPOGRAPHIC MAPS AND SYMBOLS IS AVAILABLE ON REQUEST

ROAD CLASSIFICATION
Primary highway, all weather, Light-duty road, all weather,
hard surface Improved surface
Secondary highway, all weather, Unimproved road, fair or dry
hard surface weather
State Route

CAYCE, KY.-TENN.
SE 1/4 HICKMAN 15' QUADRANGLE
N 3630-W 8900/7.5

1970
PHOTOREVISED 1982
DMA 5157 II SE-SERIES 1985
ARTHUR H. ROBINSON MAP LIBRARY
University of Wisconsin-Madison

A.H. ROBINSON
MADISON LIBRARY
DEC 16 1983