

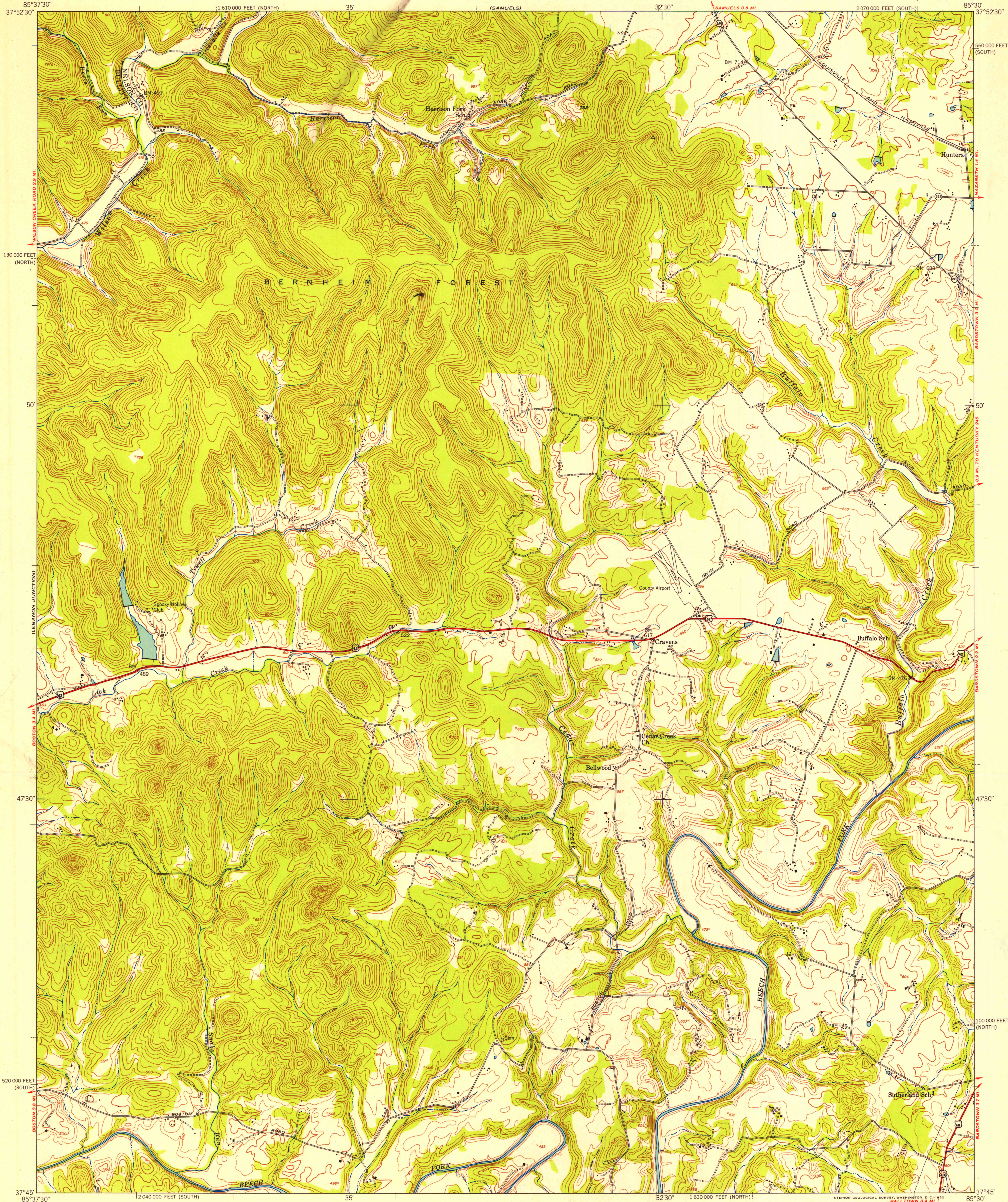
K4

28

UNITED STATES
DEPARTMENT OF THE INTERIOR
GEOLOGICAL SURVEY

UNITED STATES
DEPARTMENT OF THE ARMY
CORPS OF ENGINEERS

CRAVENS QUADRANGLE
KENTUCKY
7.5 MINUTE SERIES (TOPOGRAPHIC)



Mapped by the Army Map Service
Published for civil use by the Geological Survey

Control by USGS, USC&GS, and USCE

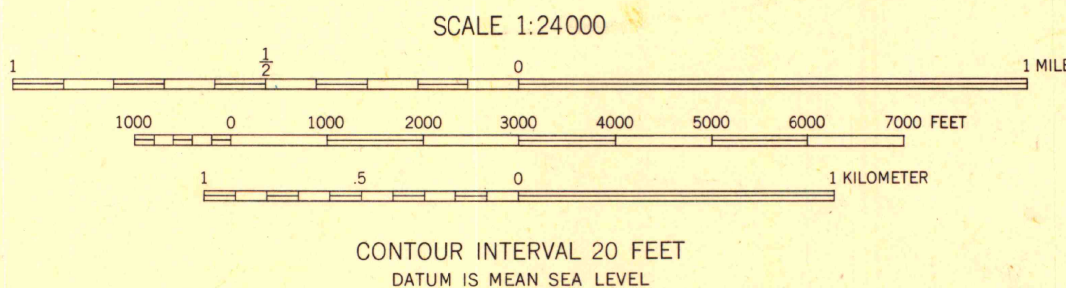
Topography from aerial photographs by multiplex methods
Aerial photographs taken 1947. Field check 1949

Polyconic projection. 1927 North American datum
10,000-foot grids based on Kentucky coordinate system,
north and south zones

No distinction is made between dwellings, barns,
commercial and industrial buildings

Unchecked elevations are shown in brown

TRUE NORTH
MAGNETIC NORTH
APPROXIMATE MEAN
DECLINATION, 1949



UNIVERSITY OF WISCONSIN
Department of Geography

ROAD CLASSIFICATION
Heavy-duty 4 LANE 6 LANE Light-duty
Medium-duty 4 LANE 6 LANE Unimproved dirt
U.S. Route State Route

CRAVENS, KY.
N3745-W8530/7.5

1949

THIS MAP COMPLIES WITH NATIONAL MAP ACCURACY STANDARDS
FOR SALE BY U. S. GEOLOGICAL SURVEY, WASHINGTON 25, D. C.
AND KENTUCKY AGRICULTURAL AND INDUSTRIAL DEVELOPMENT BOARD, FRANKFORT, KENTUCKY
A FOLDER DESCRIBING TOPOGRAPHIC MAPS AND SYMBOLS IS AVAILABLE ON REQUEST