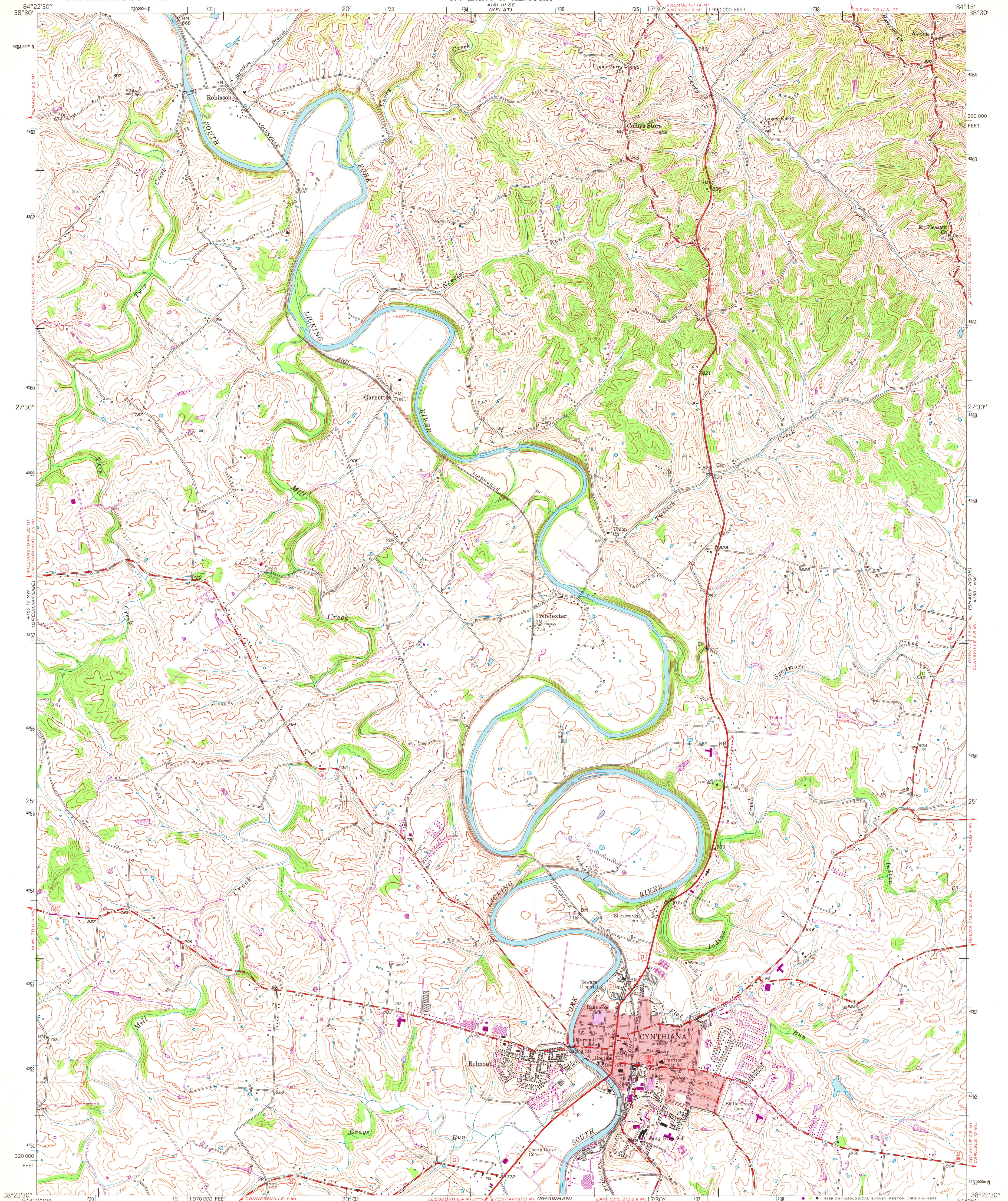
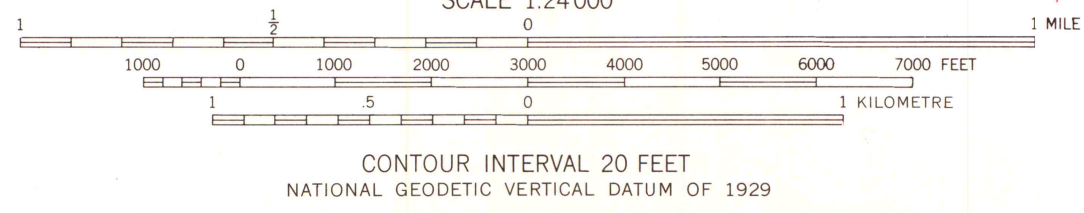


4161 IV SW
(CLAYSVILLE)



Mapped, edited, and published by the Geological Survey
Control by USGS and USC&GS
Topography by photogrammetric methods from aerial photographs
taken 1952. Field checked 1953. Revised 1961
Polyconic projection. 1927 North American datum
10,000-foot grid based on Kentucky coordinate system,
north zone
1000-metre Universal Transverse Mercator grid ticks,
zone 16, shown in blue
Fine red dashed lines indicate selected fence and field lines where
generally visible on aerial photographs. This information is unchecked
Red tint indicates area in which only landmark buildings are shown
Purple tint indicates extension of urban areas

Revisions shown in purple and woodland
compiled from aerial photographs taken 1976
and other source data. Contours adjusted adjacent
to certain photorevised hydrographic features.
This information not field checked. Map edited 1978



MAP AND A/R PHOTO LIBRARY
University of Wisconsin, Madison

AUG 2 1 1979



ROAD CLASSIFICATION
Heavy-duty ——— Light-duty ———
Medium-duty ——— Unimproved dirt ———
U.S. Route ——— State Route ———

CYNTHIANA, KY.

N 3822.5—W 8415/7.5

1961
PHOTOREVISED 1978
AMS 4160 IV NE—SERIES V853