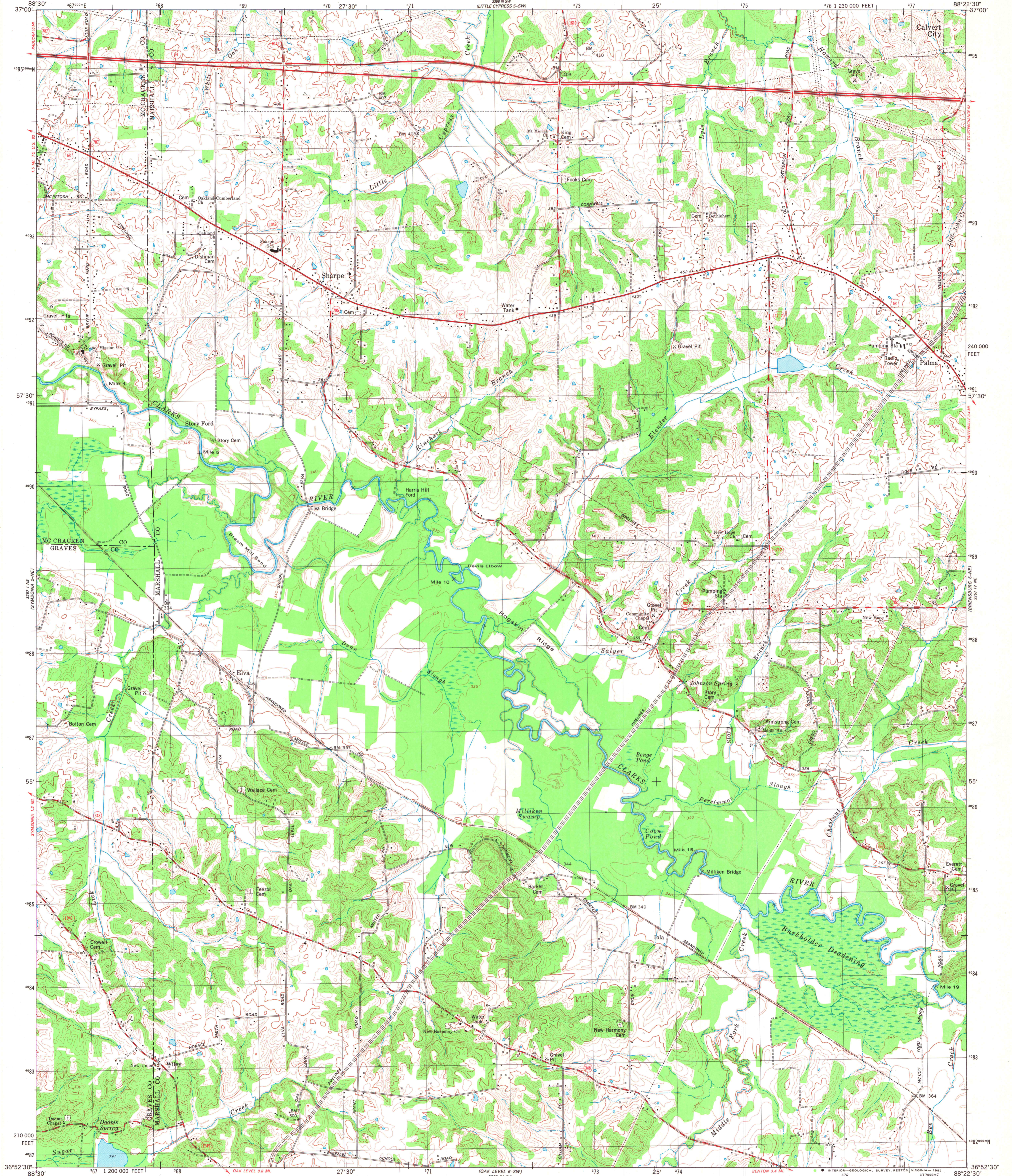
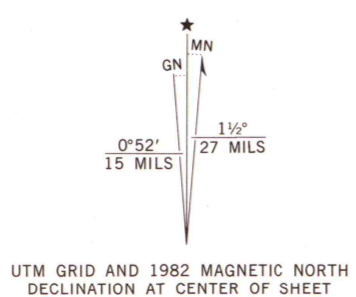


UNITED STATES
DEPARTMENT OF THE INTERIOR
GEOLOGICAL SURVEY

ELVA QUADRANGLE
KENTUCKY
7.5 MINUTE SERIES (TOPOGRAPHIC) 6-NW
NW/4 BENTON 15' QUADRANGLE



Mapped and edited by the Tennessee Valley Authority
Published by the Geological Survey. Revised by the
Geological Survey in cooperation with Kentucky Geological Survey
Control by USGS, NOS/NOAA, Tennessee Valley Authority, USCE,
and Kentucky Department of Highways
Topography by photogrammetric methods from aerial photographs
taken 1948. Field checked 1951. Revised from aerial photographs
taken 1978. Field checked 1978. Map edited 1982
Polyconic Projection. 10,000-foot grid ticks based
on Kentucky coordinate system, south zone
1000-meter Universal Transverse Mercator grid, zone 16
1927 North American Datum
To place on the predicted North American Datum 1983
move the projection lines 4 meters south and
4 meters east as shown by dashed corner ticks



SCALE 1:24 000
CONTOUR INTERVAL 10 FEET
DOTTED LINES REPRESENT 5-FOOT CONTOURS
NATIONAL GEODETIC VERTICAL DATUM OF 1929
THIS MAP COMPLIES WITH NATIONAL MAP ACCURACY STANDARDS
FOR SALE BY U. S. GEOLOGICAL SURVEY, RESTON, VIRGINIA 22092,
KENTUCKY GEOLOGICAL SURVEY, LEXINGTON, KENTUCKY 40506,
KENTUCKY DEPARTMENT OF COMMERCE, FRANKFORT, KENTUCKY 40601,
AND U. S. TENNESSEE VALLEY AUTHORITY, CHATTANOOGA, TENN. 37401 OR KNOXVILLE, TENN. 37902
A FOLDER DESCRIBING TOPOGRAPHIC MAPS AND SYMBOLS IS AVAILABLE ON REQUEST



ROAD CLASSIFICATION
Primary highway
hard surface
Secondary highway,
hard surface
Unimproved road
Interstate Route
U. S. Route
State Route

A.H. ROBINSON
MAP LIBRARY
JUN 30 1983
University of Wisconsin
Madison

ELVA, KY.
NW/4 BENTON 15' QUADRANGLE
N3652.5-W8822.5/7.5
1982
DMA 3357 IV NW-SERIES V853