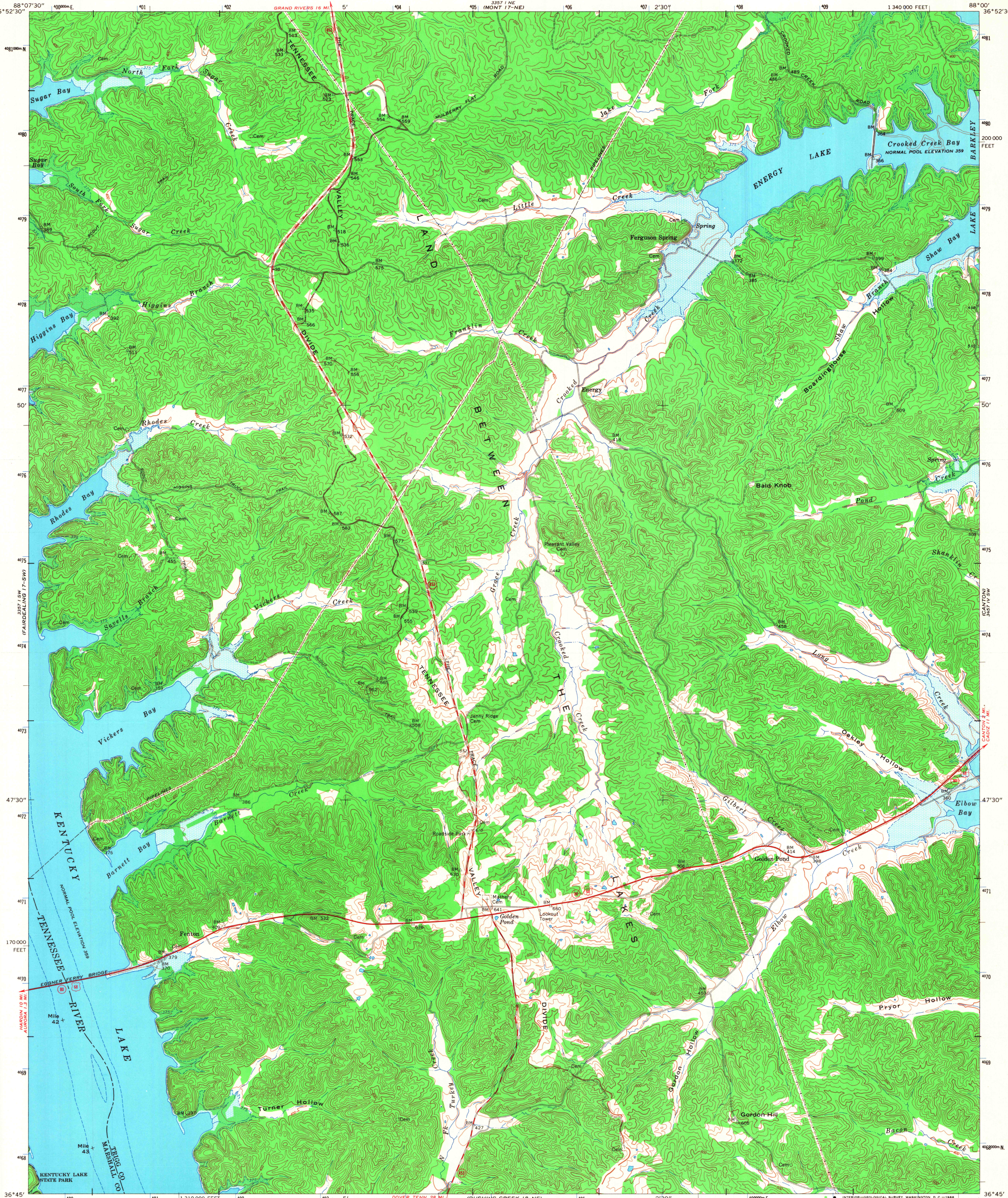
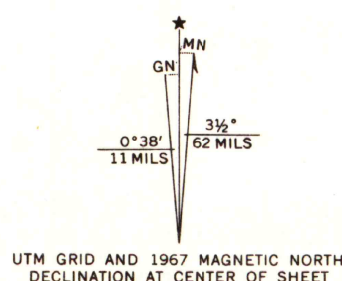


UNITED STATES  
DEPARTMENT OF THE INTERIOR  
GEOLOGICAL SURVEY

FENTON QUADRANGLE  
KENTUCKY  
7.5 MINUTE SERIES (TOPOGRAPHIC) 17-SE  
SE/4 GOLDEN POND 15' QUADRANGLE

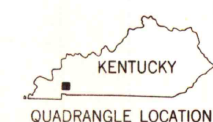


Mapped by the Tennessee Valley Authority  
Edited and published by the Geological Survey  
Revised by the Geological Survey in cooperation  
with Kentucky Geological Survey  
Control by USGS, USC&GS, and TVA  
Topography by photogrammetric methods from aerial  
photographs taken 1948. Field checked 1950. Revised 1967  
Polyconic projection. 1927 North American datum  
10,000-foot grid based on Kentucky coordinate system, south zone  
1000-meter Universal Transverse Mercator grid ticks,  
zone 16, shown in blue  
Fine red dashed lines indicate selected fence and field lines where  
generally visible on aerial photographs. This information is unchecked  
Areas covered by dashed light-blue pattern are subject to  
controlled inundation



SCALE 1:24,000  
CONTOUR INTERVAL 20 FEET  
DATUM IS MEAN SEA LEVEL  
1 0 1000 2000 3000 4000 5000 6000 7000 FEET  
1 0 1 2 3 4 5 6 7 8 9 10 KILOMETER

THIS MAP COMPLIES WITH NATIONAL MAP ACCURACY STANDARDS  
FOR SALE BY U.S. GEOLOGICAL SURVEY, WASHINGTON, D. C. 20242,  
KENTUCKY GEOLOGICAL SURVEY, LEXINGTON, KENTUCKY 40506,  
KENTUCKY DEPARTMENT OF COMMERCE, FRANKFORT, KENTUCKY 40601,  
AND BY U.S. TENNESSEE VALLEY AUTHORITY,  
CHATTANOOGA, TENN. 37401 OR KNOXVILLE, TENN. 37902  
A FOLDER DESCRIBING TOPOGRAPHIC MAPS AND SYMBOLS IS AVAILABLE ON REQUEST



MAP AND AIR PHOTO LIBRARY  
University of Wisconsin

ROAD CLASSIFICATION  
Heavy-duty ——— Light-duty ———  
Medium-duty ——— Unimproved dirt ———  
U.S. Route State Route

FENTON, KY.  
SE/4 GOLDEN POND 15' QUADRANGLE  
N3645—W8800/7.5

1967  
AMS 3357 1 SE—SERIES Y853