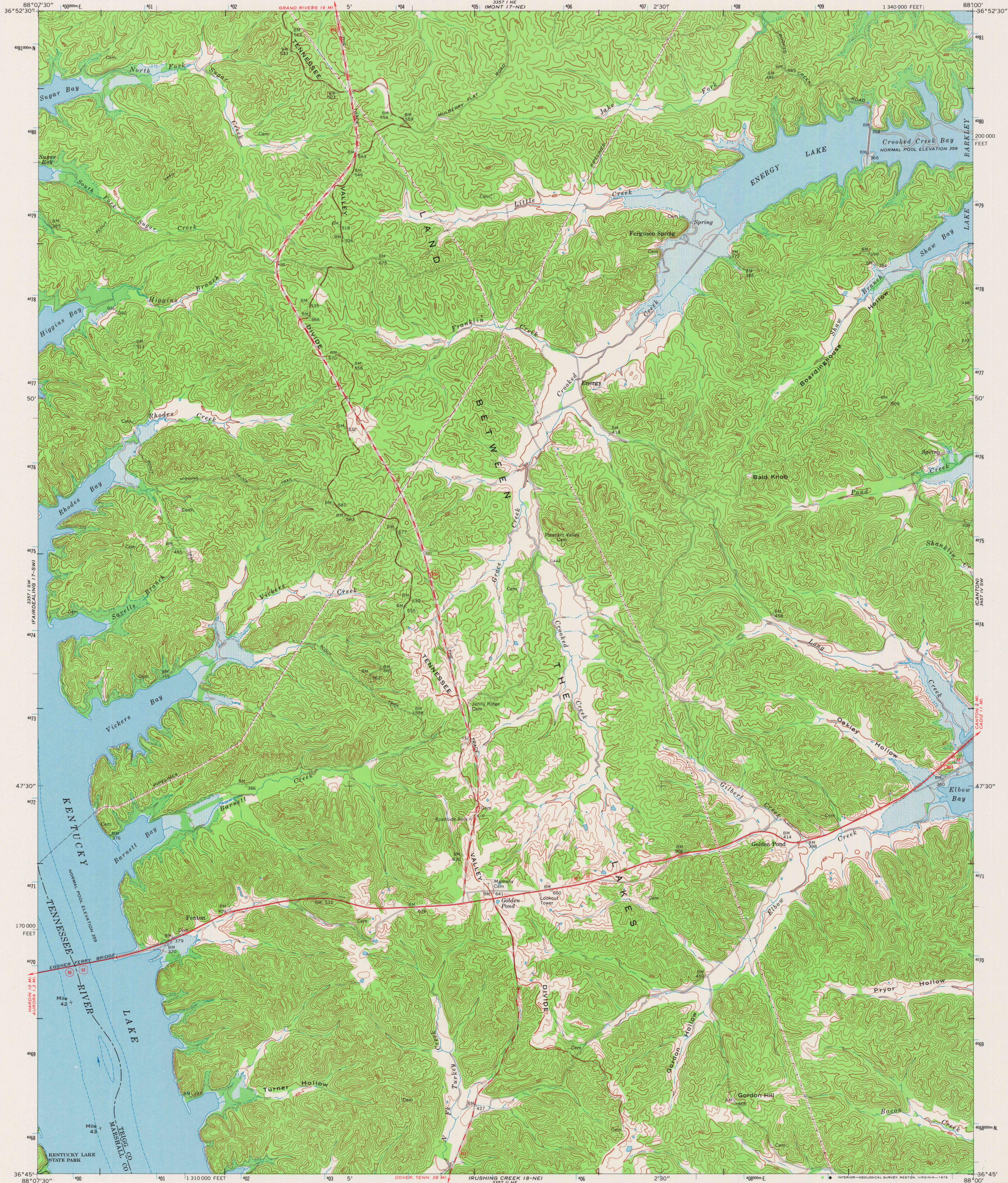


UNITED STATES
DEPARTMENT OF THE INTERIOR
GEOLOGICAL SURVEY

FENTON QUADRANGLE
KENTUCKY
7.5 MINUTE SERIES (TOPOGRAPHIC) 17-SE
SE 1/4 GOLDEN POND 15' QUADRANGLE



Mapped by the Tennessee Valley Authority
Edited and published by the Geological Survey
Revised by the Geological Survey in cooperation
with Kentucky Geological Survey
Control by USGS, USC&GS, and TVA
Topography by photogrammetric methods from aerial
photographs taken 1948. Field checked 1950. Revised 1967
Polyconic projection. 1927 North American datum
10,000-foot grid based on Kentucky coordinate system, south zone
1000-meter Universal Transverse Mercator grid ticks,
zone 16, shown in blue
To place on the predicted North American Datum 1983
move the projection lines 5 meters south and
4 meters west as shown by dashed corner ticks
Fine red dashed lines indicate selected fence and field lines where
generally visible on aerial photographs. This information is unchecked

Area covered by dashed light-blue pattern is subject to
controlled inundation

SCALE 1:24 000
CONTOUR INTERVAL 20 FEET
NATIONAL GEODETIC VERTICAL DATUM OF 1929
THIS MAP COMPLIES WITH NATIONAL MAP ACCURACY STANDARDS
FOR SALE BY U.S. GEOLOGICAL SURVEY, RESTON, VIRGINIA 22092
KENTUCKY GEOLOGICAL SURVEY, LEXINGTON, KENTUCKY 40506,
KENTUCKY DEPARTMENT OF COMMERCE, FRANKFORT, KENTUCKY 40601,
AND BY U.S. TENNESSEE VALLEY AUTHORITY,
CHATTANOOGA, TENN. 37401 OR KNOXVILLE, TENN. 37902
A FOLDER DESCRIBING TOPOGRAPHIC MAPS AND SYMBOLS IS AVAILABLE ON REQUEST

There may be private inholdings within the boundaries of
the National or State reservations shown on this map

ROAD CLASSIFICATION
Heavy-duty ——— Light-duty ———
Medium-duty ——— Unimproved dirt ———
U.S. Route ——— State Route ———
FENTON, KY.
SE 1/4 GOLDEN POND 15' QUADRANGLE
N 3645—W 8800/7.5
1967
AMS 3357 I SE—SERIES V 853

MAY 25 1982

3150