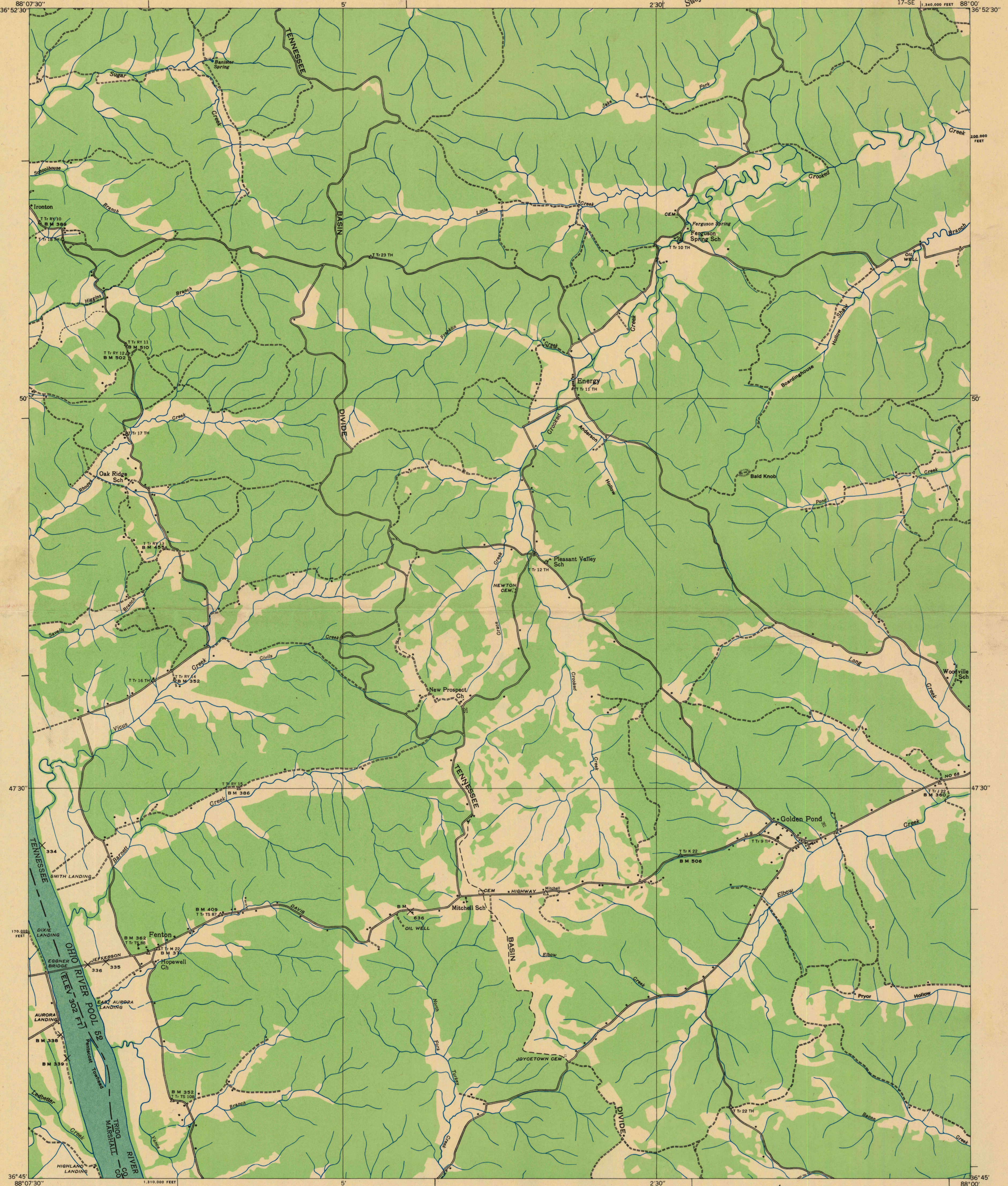
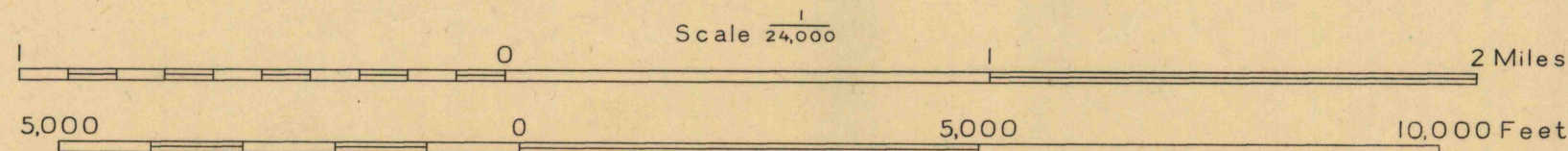


Advance sheet  
Subject to correction



Albert Pike, Division Engineer  
Compiled by U. S. Geological Survey from aerial photographs  
Control by U. S. Geological Survey, U. S. Coast and Geodetic Survey,  
Corps of Engineers, U. S. Army and Tennessee Valley Authority  
Field examination in 1936



TRUE NORTH  
MAGNETIC NORTH  
APPROXIMATE MEAN  
DECLINATION, 1906

Polyconic projection. 1927 North American datum  
10,000 foot grid based on Kentucky (South)  
rectangular coordinate system  
Ridge line  
Trail  
Probable drainage  
FENTON, KY.  
17-SE