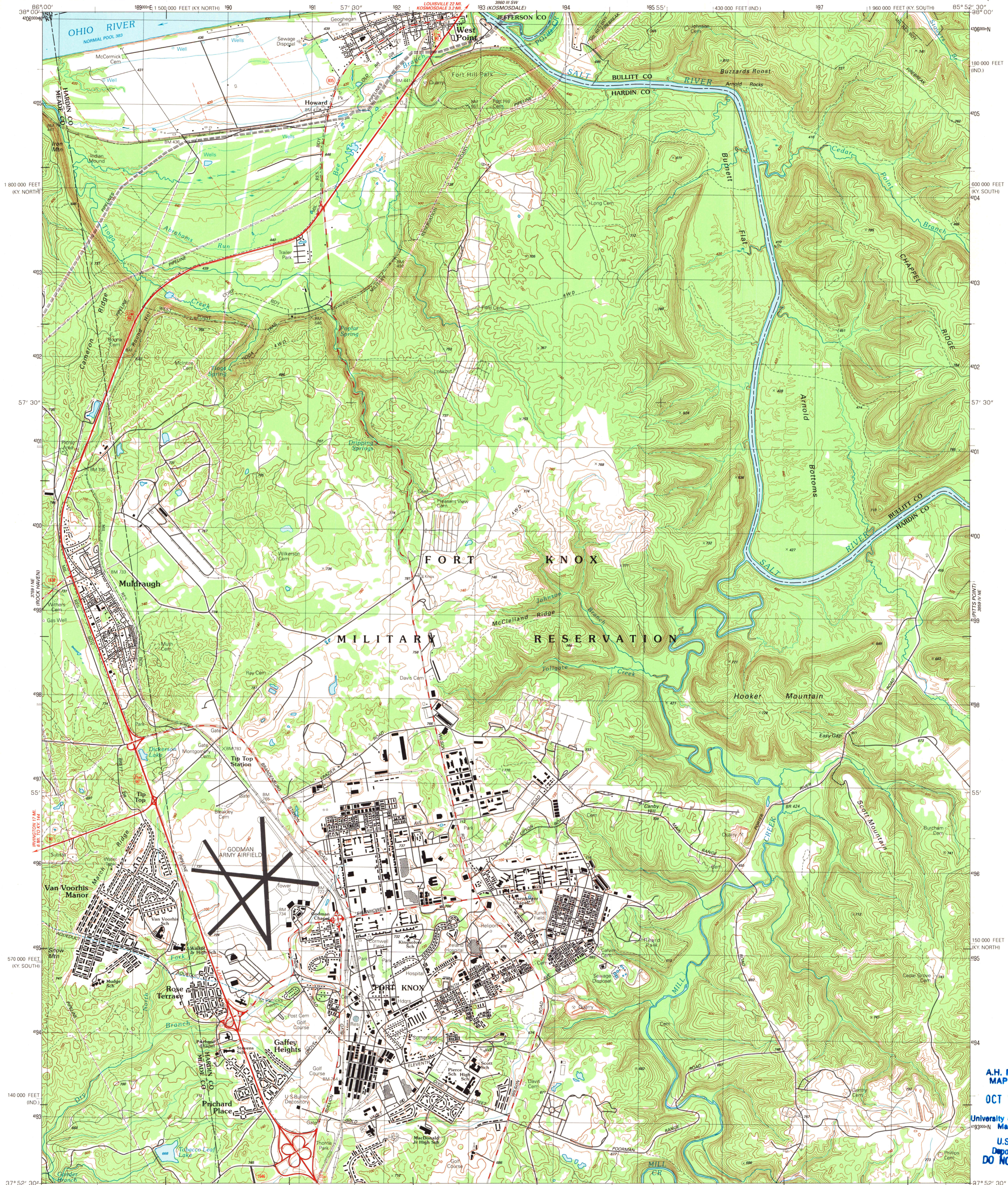
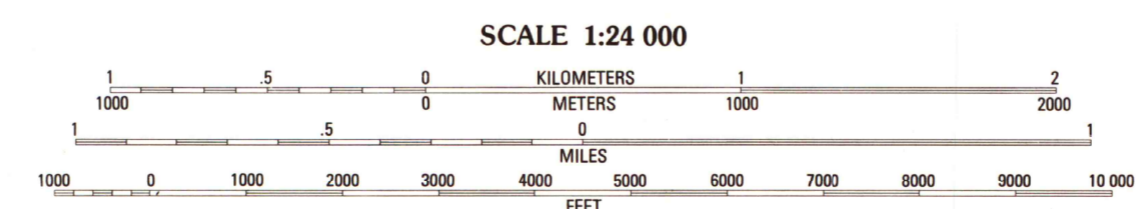
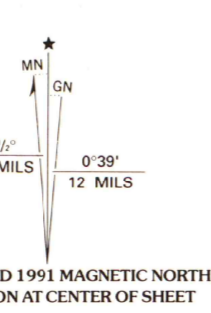


UNITED STATES
DEPARTMENT OF THE INTERIOR
GEOLOGICAL SURVEY

FORT KNOX QUADRANGLE
KENTUCKY-INDIANA
7.5 MINUTE SERIES (TOPOGRAPHIC)
NW/4 VINE GROVE 15 QUADRANGLE



Produced by the United States Geological Survey
Control by USGS and NOS/NOAA
Compiled from aerial photographs taken 1987
Field checked 1988. Map edited 1991
Projection: Kentucky coordinate system, south zone
(Lambert conformal conic)
10,000-foot grid ticks: Kentucky coordinate system,
south and north zones and Indiana coordinate system, west zone
1000-meter Universal Transverse Mercator grid, zone 16
1927 North American Datum
The difference between 1927 North American Datum and North
American Datum of 1983 (NAD 83) for 7.5-minute intersections
is given in USGS Bulletin 1875. The NAD 83 is shown by
dashed corner ticks
There may be private inholdings within the boundaries of
the National or State reservations shown on this map
Fine red dashed lines indicate selected fence and field lines where
generally visible on aerial photographs. This information is unchecked



CONTOUR INTERVAL 20 FEET
NATIONAL GEODETIC VERTICAL DATUM OF 1929

THIS MAP COMPLIES WITH NATIONAL MAP ACCURACY STANDARDS
FOR SALE BY U.S. GEOLOGICAL SURVEY, DENVER, COLORADO 80225, OR RESTON, VIRGINIA 22092
KENTUCKY GEOLOGICAL SURVEY, LEXINGTON, KENTUCKY 40506
AND KENTUCKY DEPARTMENT OF COMMERCE, FRANKFORT, KENTUCKY 40601
A FOLDER DESCRIBING TOPOGRAPHIC MAPS AND SYMBOLS IS AVAILABLE ON REQUEST

ROAD CLASSIFICATION
Primary highway, hard surface Light-duty road, hard or improved surface
Secondary highway, hard surface Unimproved road
Interstate Route U. S. Route State Route



FORT KNOX, KY-IND.
NW/4 VINE GROVE 15 QUADRANGLE
37085-H8-TF-024

1991

DMA 3859 IV NW-SERIES V853

A.H. ROBINSON
MAP LIBRARY
OCT 19 1992
University of Wisconsin
Madison
U.S. Regional
Depository Copy
DO NOT DISCARD