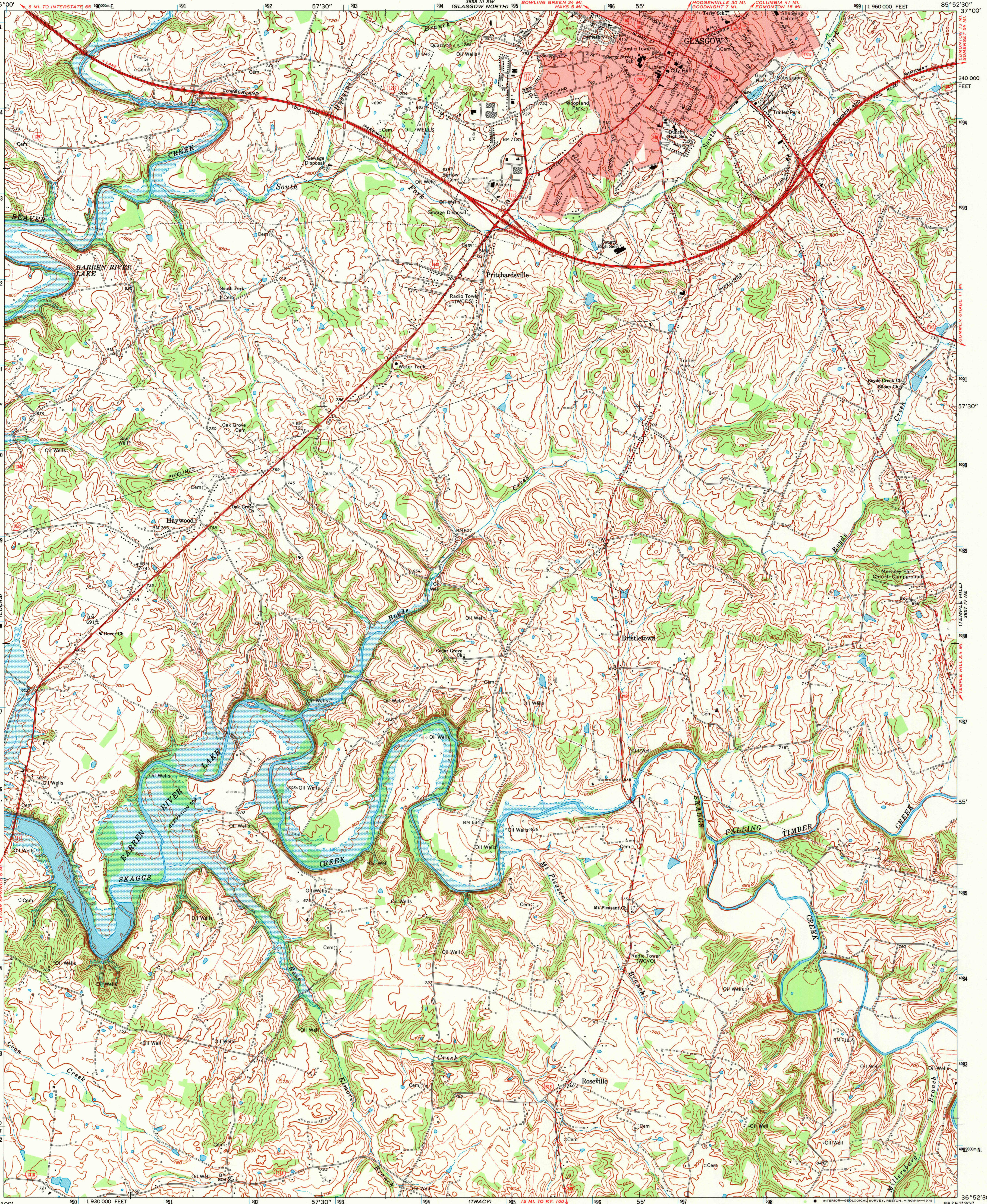




UNITED STATES  
DEPARTMENT OF THE INTERIOR  
GEOLOGICAL SURVEY

STATE OF KENTUCKY  
KENTUCKY GEOLOGICAL SURVEY  
UNIVERSITY OF KENTUCKY

GLASGOW SOUTH QUADRANGLE  
KENTUCKY - BARREN CO.  
7.5 MINUTE SERIES (TOPOGRAPHIC)  
NW/4 GLASGOW 15' QUADRANGLE  
1:960 000 FEET



Mapped, edited, and published by the Geological Survey  
Control by USGS and USC&GS  
Topography by photogrammetric methods from aerial photographs  
taken 1951. Field checked 1953. Revised from aerial  
photographs taken 1973. Field checked 1973  
Polyconic projection. 1927 North American datum  
10,000-foot grid based on Kentucky coordinate system, south zone  
1000-meter Universal Transverse Mercator grid ticks,  
zone 16, shown in blue  
Fine red dashed lines indicate selected fence and field lines where  
generally visible on aerial photographs. This information is unchecked  
Red tint indicates area in which only landmark buildings are shown  
Areas covered by dashed light blue pattern  
are subject to controlled inundation

UTM GRID AND 1973 MAGNETIC NORTH  
DECLINATION AT CENTER OF SHEET  
Map photoinspired 1979  
No major culture or drainage changes observed

THIS MAP COMPLIES WITH NATIONAL MAP ACCURACY STANDARDS  
FOR SALE BY U. S. GEOLOGICAL SURVEY, DENVER, COLORADO 80225, OR RESTON, VIRGINIA 22092  
KENTUCKY GEOLOGICAL SURVEY, LEXINGTON, KENTUCKY 40506  
AND KENTUCKY DEPARTMENT OF COMMERCE, FRANKFORT, KENTUCKY 40601  
A FOLDER DESCRIBING TOPOGRAPHIC MAPS AND SYMBOLS IS AVAILABLE ON REQUEST

ROAD CLASSIFICATION  
Primary highway, hard surface  
Secondary highway, hard surface  
Unimproved road  
Light-duty road, hard or improved surface  
Unimproved road  
Interstate Route  
U. S. Route  
State Route  
GLASGOW SOUTH, KY.  
NW/4 GLASGOW 15' QUADRANGLE  
N3652.5-W8552.5/7.5  
1973  
PHOTOINSPECTED 1979  
AMS 3857 IV NW-SERIES V855