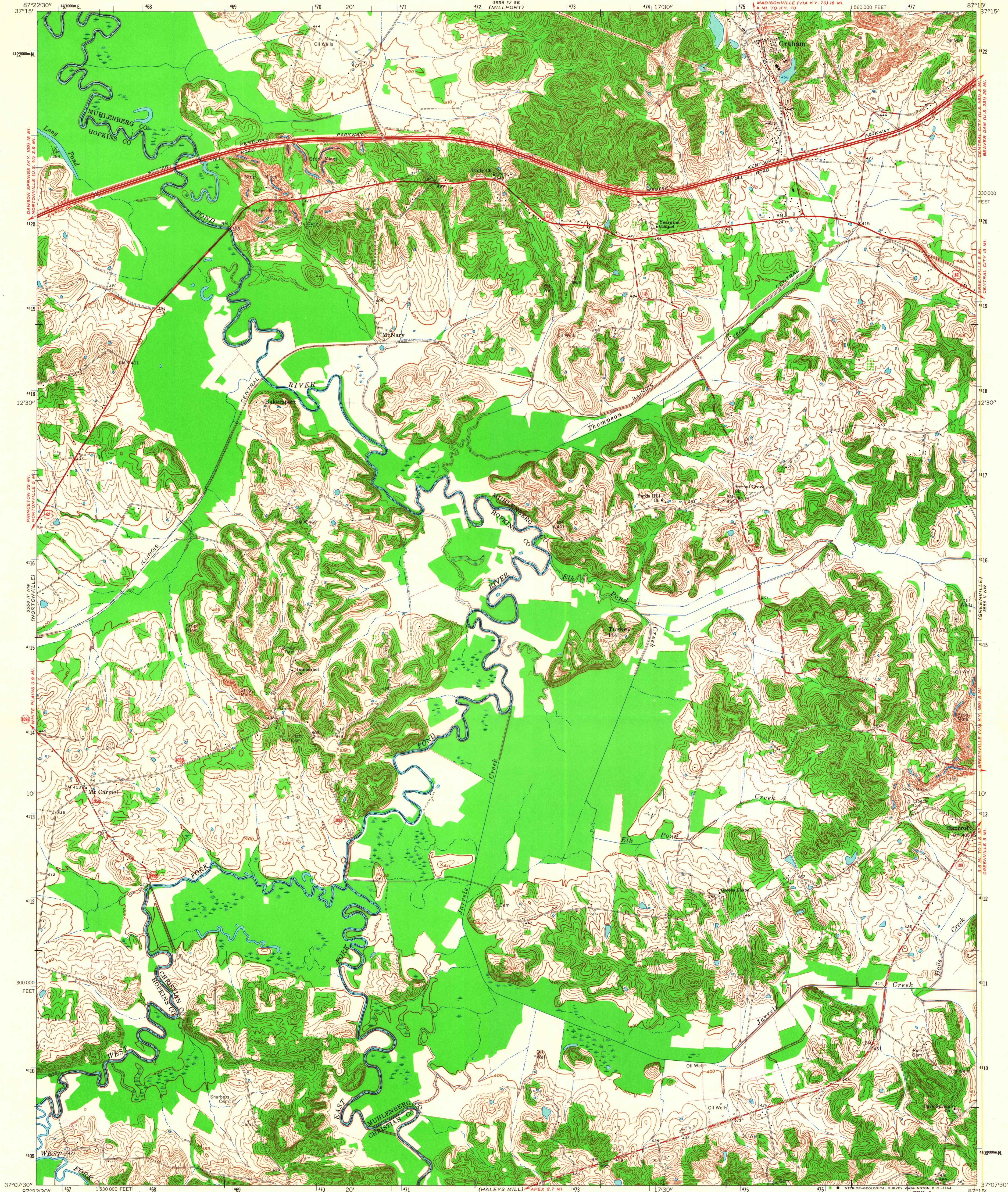


UNITED STATES
DEPARTMENT OF THE INTERIOR
GEOLOGICAL SURVEY

STATE OF KENTUCKY
KENTUCKY GEOLOGICAL SURVEY
UNIVERSITY OF KENTUCKY

GRAHAM QUADRANGLE
KENTUCKY
7.5 MINUTE SERIES (TOPOGRAPHIC)
NE/4 NORTONVILLE 15' QUADRANGLE



Mapped, edited, and published by the Geological Survey
Control by USGS and USC&GS
Topography by photogrammetric methods from aerial photographs
taken 1951. Field checked 1953. Revised 1963
Polyconic projection. 1927 North American datum
10,000-foot grid based on Kentucky coordinate system, south zone
1000-meter Universal Transverse Mercator grid ticks,
zone 16, shown in blue
Fine red dashed lines indicate selected fence and field lines where
generally visible on aerial photographs. This information is unchecked

UTM GRID AND 1963 MAGNETIC NORTH
DECLINATION AT CENTER OF SHEET

SCALE 1:24,000
CONTOUR INTERVAL 10 FEET
DATUM IS MEAN SEA LEVEL

THIS MAP COMPLIES WITH NATIONAL MAP ACCURACY STANDARDS
FOR SALE BY U. S. GEOLOGICAL SURVEY, WASHINGTON 25, D. C.,
KENTUCKY GEOLOGICAL SURVEY, LEXINGTON, KENTUCKY,
AND KENTUCKY DEPARTMENT OF COMMERCE, FRANKFORT, KENTUCKY
A FOLDER DESCRIBING TOPOGRAPHIC MAPS AND SYMBOLS IS AVAILABLE ON REQUEST



ROAD CLASSIFICATION
Heavy-duty ——— Light-duty ———
Medium-duty ——— Unimproved dirt ———
U. S. Route ——— State Route ———

GRAHAM, KY.
NE/4 NORTONVILLE 15' QUADRANGLE
N3707.5—W8715/7.5

1963

AMS 3558 III NE—SERIES V853