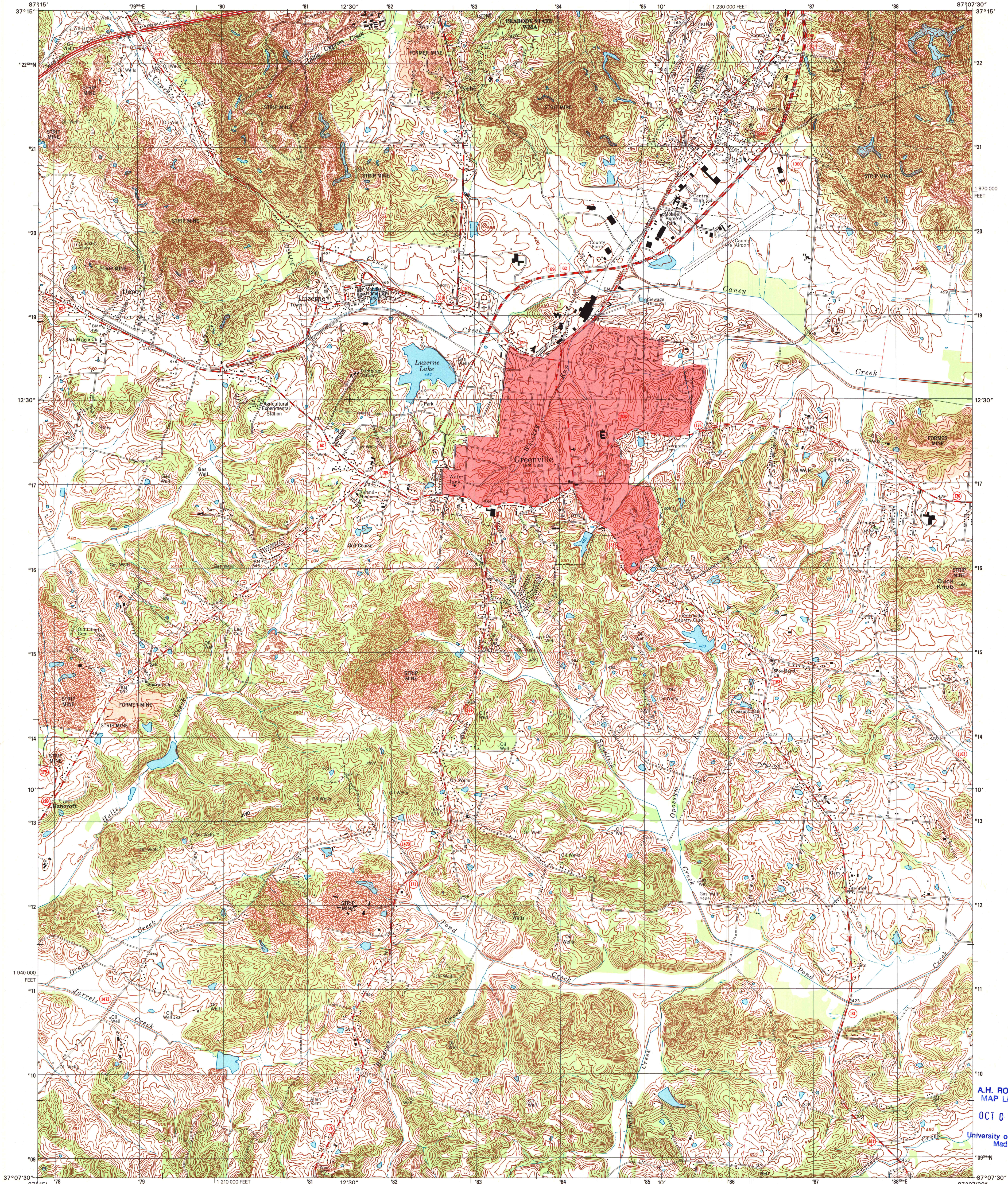




U.S. DEPARTMENT OF THE INTERIOR
U.S. GEOLOGICAL SURVEY

GREENVILLE QUADRANGLE
KENTUCKY-MUHLENBERG CO.
7.5-MINUTE SERIES (TOPOGRAPHIC)

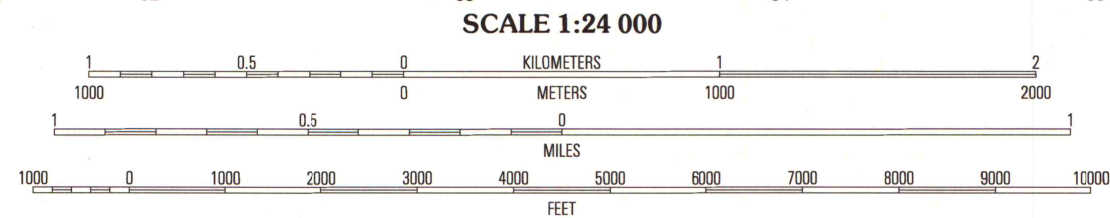
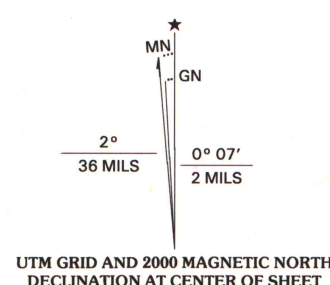


A.H. ROBINSON
MAP LIBRARY
OCT 01 2001
University of Wisconsin
Madison

U.S. Regional
Depository Copy
DO NOT DISCARD

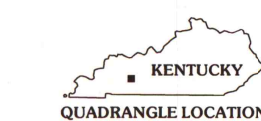


Produced by the United States Geological Survey
Topography compiled 1951. Planimetry derived from imagery
taken 1997 and other sources. Survey control current as of 1952
North American Datum of 1983 (NAD 83). Projection and
1 000-foot ticks: Kentucky Coordinate System of 1983 (south zone)
North American Datum of 1927 (NAD 27) is shown by dashed
corner ticks. The values of the shift between NAD 83 and
NAD 27 for 7.5-minute intersections are obtainable from
National Geodetic Survey NADCON software.
There may be private inholdings within the boundaries of the
National or State reservations shown on this map.
Landmark buildings verified 1952.



CONTOUR INTERVAL 10 FEET
NATIONAL GEODETIC VERTICAL DATUM OF 1929
TO CONVERT FROM FEET TO METERS, MULTIPLY BY 0.3048

THIS MAP COMPLIES WITH NATIONAL MAP ACCURACY STANDARDS
FOR SALE BY U.S. GEOLOGICAL SURVEY, P.O. BOX 25286, DENVER, COLORADO 80225
KENTUCKY GEOLOGICAL SURVEY, LEXINGTON, KENTUCKY 40506
AND KENTUCKY DEPARTMENT OF COMMERCE, FRANKFORT, KENTUCKY 40601
A FOLDER DESCRIBING TOPOGRAPHIC MAPS AND SYMBOLS IS AVAILABLE ON REQUEST



1	2	3	1 Millport
4	5	2 Central City West	
6	7	3 Central City East	
		4 Graham	
		5 Drakesboro	
		6 Hays Mill	
		7 Kilmansville	
		8 Rosewood	

ROAD CLASSIFICATION
Primary highway
hard surface
Secondary highway
hard surface
Light-duty road, hard or
improved surface
Unimproved road

Interstate Route U.S. Route State Route

GREENVILLE, KY

1997

NIMA 3558 II NW-Series V853