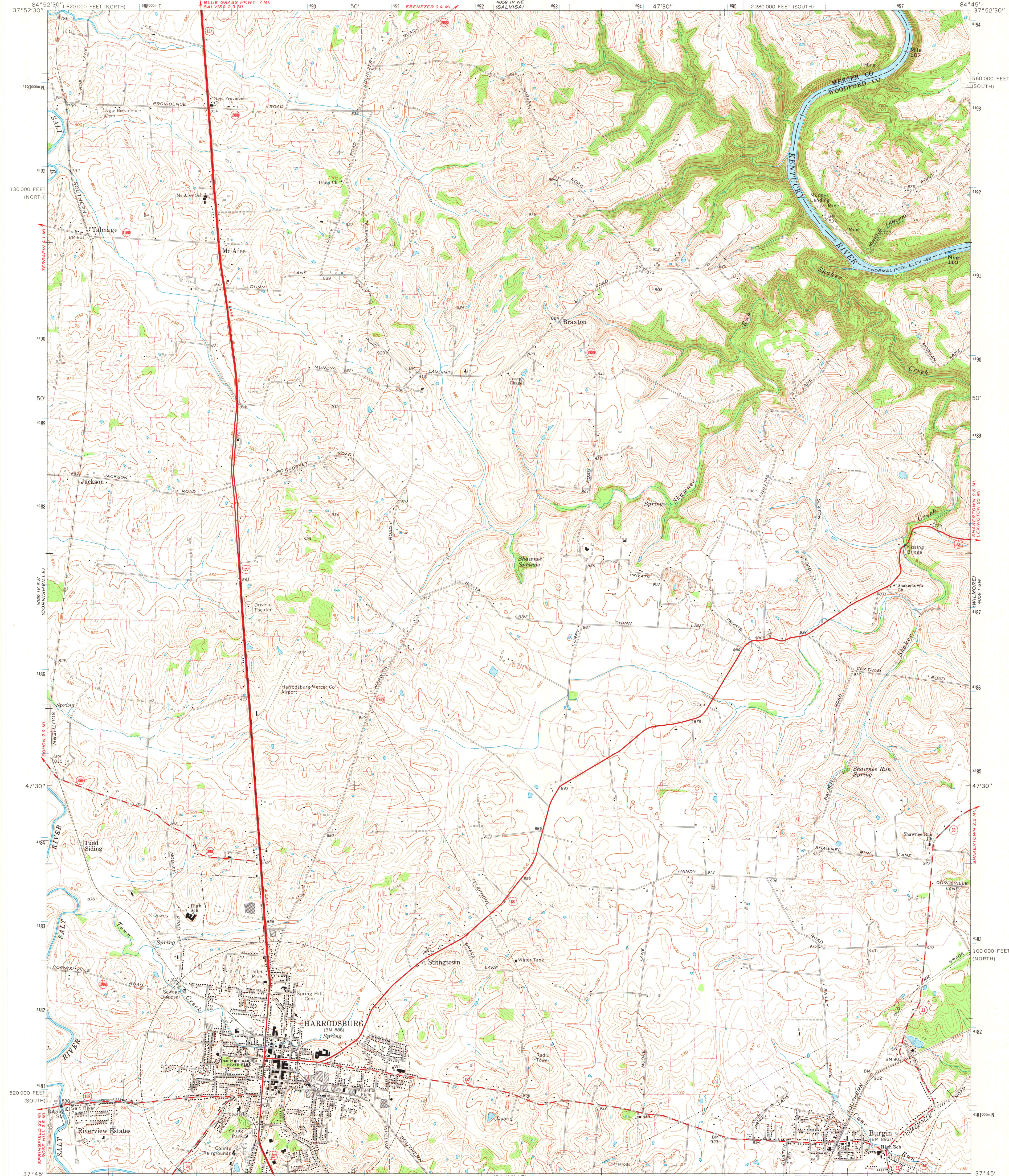


UNITED STATES
DEPARTMENT OF THE INTERIOR
GEOLOGICAL SURVEY

STATE OF KENTUCKY
KENTUCKY GEOLOGICAL SURVEY
UNIVERSITY OF KENTUCKY

HARRODSBURG QUADRANGLE
KENTUCKY
7.5 MINUTE SERIES (TOPOGRAPHIC)
SE 1/4 HARRODSBURG 15' QUADRANGLE



Mapped, edited, and published by the Geological Survey
Control by USGS and USC&GS
Topography by photogrammetric methods from aerial photographs
taken 1950. Field checked 1952. Revised from aerial
photographs taken 1967. Field checked 1967
Polyconic projection. 1927 North American datum
10,000-foot grids based on Kentucky coordinate system,
south zone and north zone
1000-meter Universal Transverse Mercator grid ticks,
zone 16, shown in blue
Fine red dashed lines indicate selected fence and field lines where
generally visible on aerial photographs. This information is unchecked
Map photoinspected 1976
No major culture or drainage changes observed

UTM GRID AND 1967 MAGNETIC NORTH
DECLINATION AT CENTER OF SHEET

SCALE 1:24000
CONTOUR INTERVAL 10 FEET
NATIONAL GEODETIC VERTICAL DATUM OF 1929

THIS MAP COMPLIES WITH NATIONAL MAP ACCURACY STANDARDS
FOR SALE BY U.S. GEOLOGICAL SURVEY, RESTON, VIRGINIA 22092,
KENTUCKY GEOLOGICAL SURVEY, LEXINGTON, KENTUCKY 40506,
AND KENTUCKY DEPARTMENT OF COMMERCE, FRANKFORT, KENTUCKY 40601
A FOLDER DESCRIBING TOPOGRAPHIC MAPS AND SYMBOLS IS AVAILABLE ON REQUEST

ROAD CLASSIFICATION
Primary highway, all weather, hard surface
Secondary highway, all weather, hard surface
Light duty road, all weather, improved surface
Unimproved road, fair or dry weather
U.S. Route
State Route



MAP AND AIR PHOTO
LIBRARY

JUN 19 1978

University of Wisconsin
Madison

HARRODSBURG, KY.
SE 1/4 HARRODSBURG 15' QUADRANGLE
N3745-W8445/7.5

1967
PHOTOINSPECTED 1976
AMS 4059 IV SE-SERIES V853