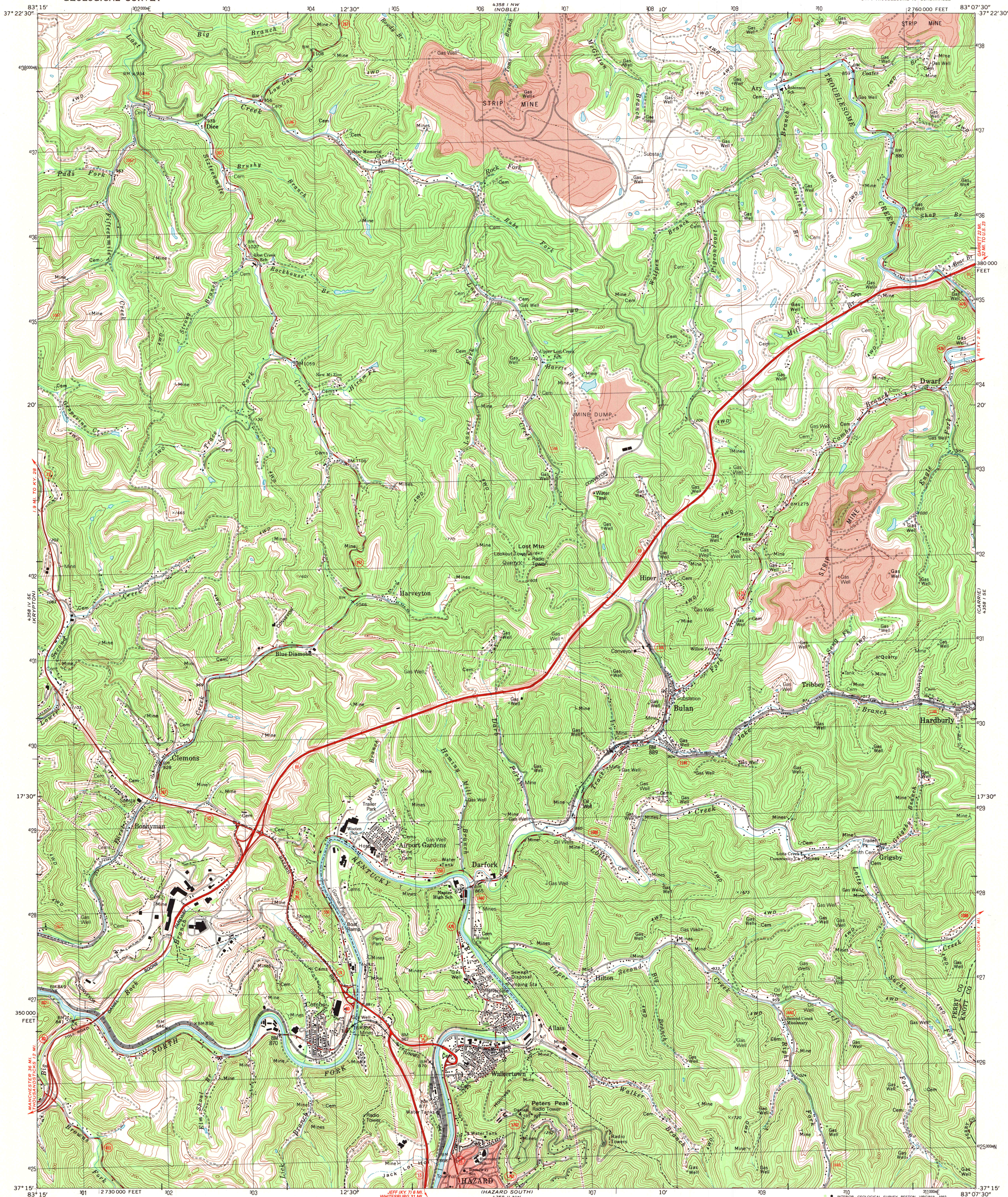


UNITED STATES
DEPARTMENT OF THE INTERIOR
GEOLOGICAL SURVEY

HAZARD NORTH QUADRANGLE
KENTUCKY
7.5 MINUTE SERIES (TOPOGRAPHIC)
SW/4 TROUBLESOME 15' QUADRANGLE

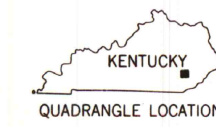


Produced by the United States Geological Survey
in cooperation with Kentucky Geological Survey
Control by USGS and NOS/NOAA
Topography by photogrammetric methods from aerial photographs
taken 1953. Field checked 1952. Revised from aerial photographs
taken 1968. Field checked 1990. Map edited 1992
Projection and 10,000-foot grid ticks: Kentucky coordinate
system, south zone (Lambert conformal conic)
1000-meter Universal Transverse Mercator grid, zone 17
1927 North American Datum
The difference between 1927 North American Datum and North
American Datum of 1983 (NAD 83) for 7.5-minute intersections
is given in USGS Bulletin 1875. The NAD 83 is shown by
dashed corner ticks
Red tint indicates area in which only landmark buildings are shown

UTM GRID AND 1992 MAGNETIC NORTH
DECLINATION AT CENTER OF SHEET

SCALE 1:24,000
1 0 1000 2000 3000 4000 5000 6000 7000 FEET
1 0 5 10 KILOMETER
CONTOUR INTERVAL 40 FEET
NATIONAL GEODETIC VERTICAL DATUM OF 1929

THIS MAP COMPLIES WITH NATIONAL MAP ACCURACY STANDARDS
FOR SALE BY U.S. GEOLOGICAL SURVEY, DENVER, COLORADO 80225, OR RESTON, VIRGINIA 22092
KENTUCKY GEOLOGICAL SURVEY, LEXINGTON, KENTUCKY 40506
AND KENTUCKY DEPARTMENT OF COMMERCE, FRANKFORT, KENTUCKY 40601
A FOLDER DESCRIBING TOPOGRAPHIC MAPS AND SYMBOLS IS AVAILABLE ON REQUEST



U.S. Depository Copy
DO NOT DISCARD

ROAD CLASSIFICATION
Primary highway, hard surface
Secondary highway, hard surface
Interstate Route
Light-duty road, hard or improved surface
Unimproved road
U. S. Route
State Route

A.H. ROBINSON
MAP LIBRARY
DEC 21 1992
University of Wisconsin
Madison

HAZARD NORTH, KY.
SW/4 TROUBLESOME 15' QUADRANGLE
37083-C2-TF-024
1992
DMA 4358 1 SW - SERIES V853