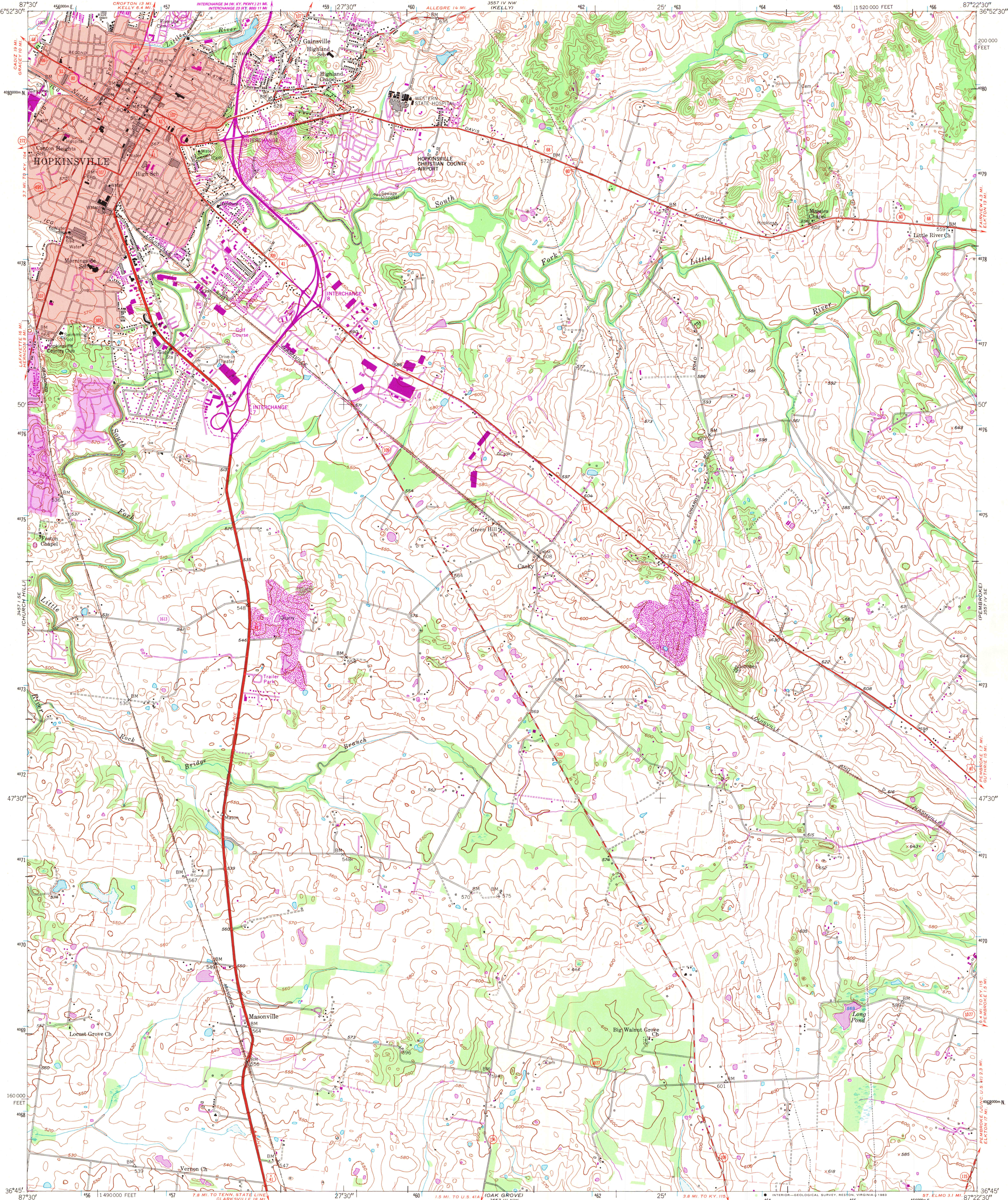


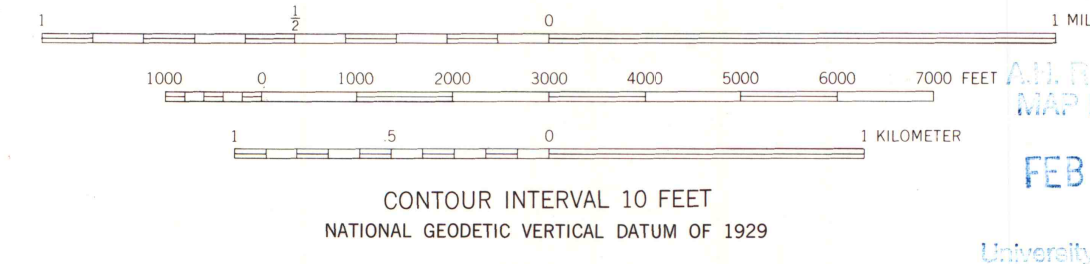
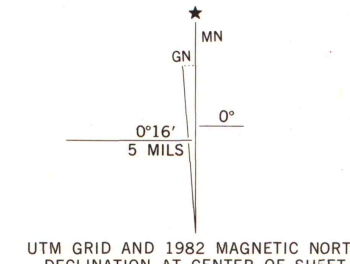
UNITED STATES
DEPARTMENT OF THE INTERIOR
GEOLOGICAL SURVEY

STATE OF KENTUCKY
KENTUCKY GEOLOGICAL SURVEY
UNIVERSITY OF KENTUCKY

HOPKINSVILLE QUADRANGLE
KENTUCKY—CHRISTIAN CO.
7.5 MINUTE SERIES (TOPOGRAPHIC)
SW/4 CASKY 15' QUADRANGLE



Mapped, edited, and published by the Geological Survey
Control by USGS and NOS/NOAA
Culture and drainage in part compiled from aerial photographs taken 1949. Topography by planetable surveys 1950. Revised 1956
Polyconic projection. 10,000-foot grid ticks based on Kentucky coordinate system, south zone. 1000-meter Universal Transverse Mercator grid ticks, zone 16, shown in blue. 1927 North American Datum. To place on the predicted North American Datum 1983 move the projection lines 5 meters south and 2 meters east as shown by dashed corner ticks
Fine red dashed lines indicate selected fence and field lines where generally visible on aerial photographs. This information is unchecked
Red tint indicates areas in which only landmark buildings are shown



FEB 2 1984
UNIVERSITY OF WISCONSIN
MAP LIBRARY



ROAD CLASSIFICATION
Heavy-duty ——— Light-duty ———
Medium-duty ——— Unimproved dirt ———
U. S. Route ——— State Route ———

HOPKINSVILLE, KY.
SW/4 CASKY 15' QUADRANGLE
N3645—W8722.5/7.5
1956
PHOTOREVISED 1982
DMA 3557 IV SW—SERIES V853

ARTHUR H. ROBINSON MAP LIBRARY
University of Wisconsin-Madison