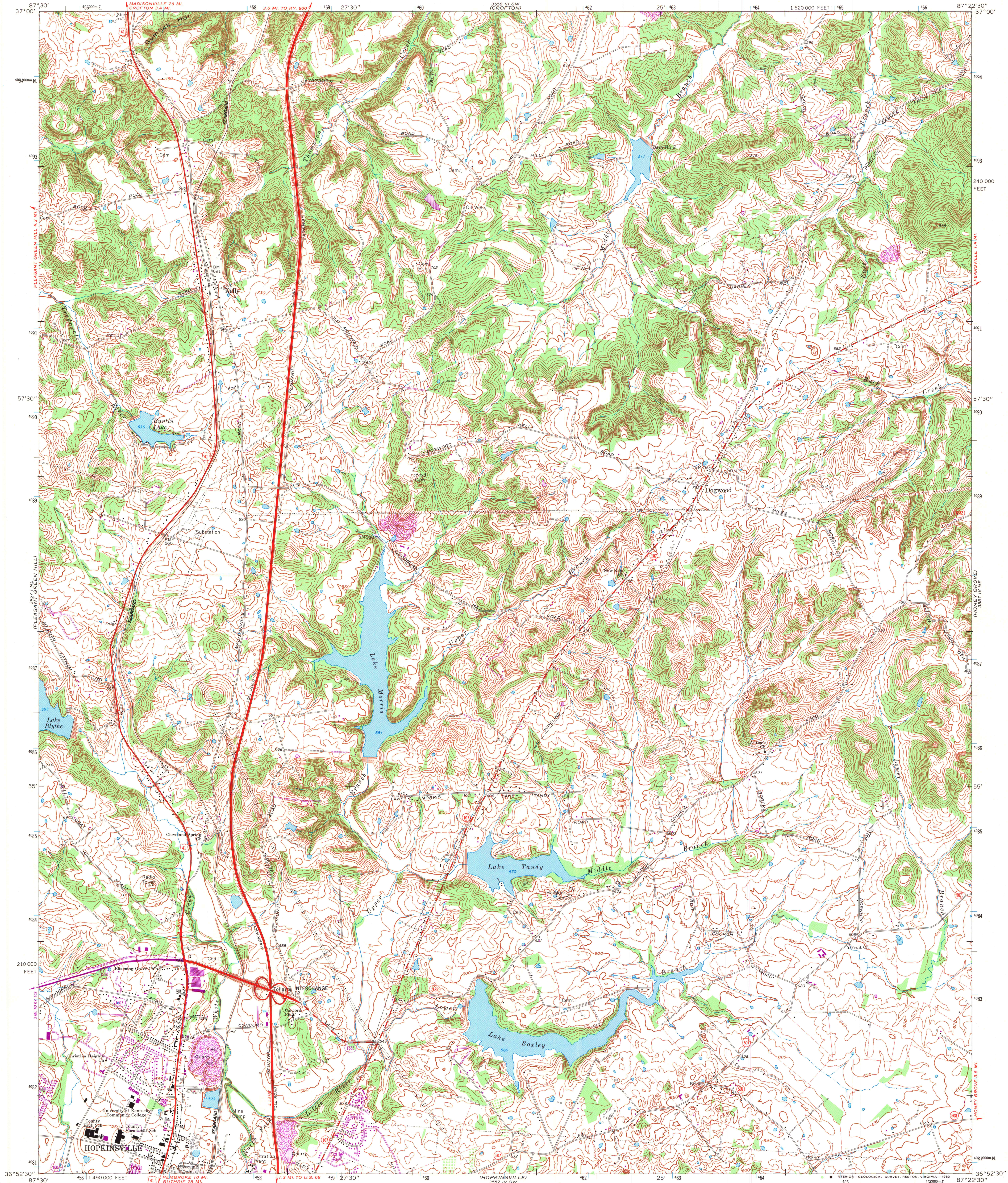


UNITED STATES
DEPARTMENT OF THE INTERIOR
GEOLOGICAL SURVEY

STATE OF KENTUCKY
KENTUCKY GEOLOGICAL SURVEY
UNIVERSITY OF KENTUCKY

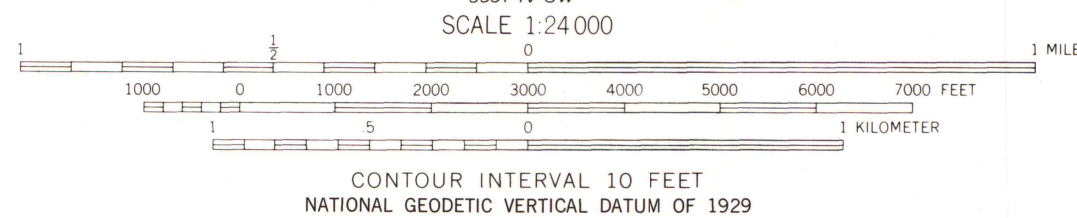
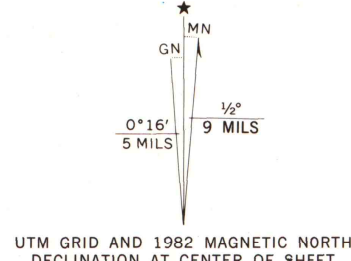
KELLY QUADRANGLE
KENTUCKY—CHRISTIAN CO.
7.5 MINUTE SERIES (TOPOGRAPHIC)
NW/4 CASKY 15' QUADRANGLE



Mapped, edited, and published by the Geological Survey
Control by USGS and NOS/NOAA

Topography by photogrammetric methods from aerial photographs taken 1950. Field checked 1962. Revised from aerial photographs taken 1969. Field checked 1969.
Polyconic projection. 10,000-foot grid ticks based on Kentucky coordinate system, south zone. 1000-meter Universal Transverse Mercator grid ticks, zone 16, shown in blue. 1927 North American Datum. To place on the predicted North American Datum 1983 move the projection lines 5 meters south and 2 meters east as shown by dashed corner ticks.
Fine red dashed lines indicate selected fence and field lines where generally visible on aerial photographs. This information is unchecked.

Revisions shown in purple and woodland compiled in cooperation with State of Kentucky agencies from aerial photographs taken 1981 and other sources. Contours adjusted adjacent to certain photorevised hydrographic features. This information not field checked. Map edited 1982.



ROAD CLASSIFICATION	
Primary highway, all weather, hard surface	Light-duty road, all weather, improved surface
Secondary highway, all weather, hard surface	Unimproved road, fair or dry weather
U. S. Route	State Route

KELLY, KY.
NW/4 CASKY 15' QUADRANGLE
36087-H4-TF-024

1969
PHOTOREVISED 1982
DMA 3557 IV NW—SERIES V853

A.H. ROBINSON
MAP LIBRARY
MAY 01 1984
University of Wisconsin
Madison