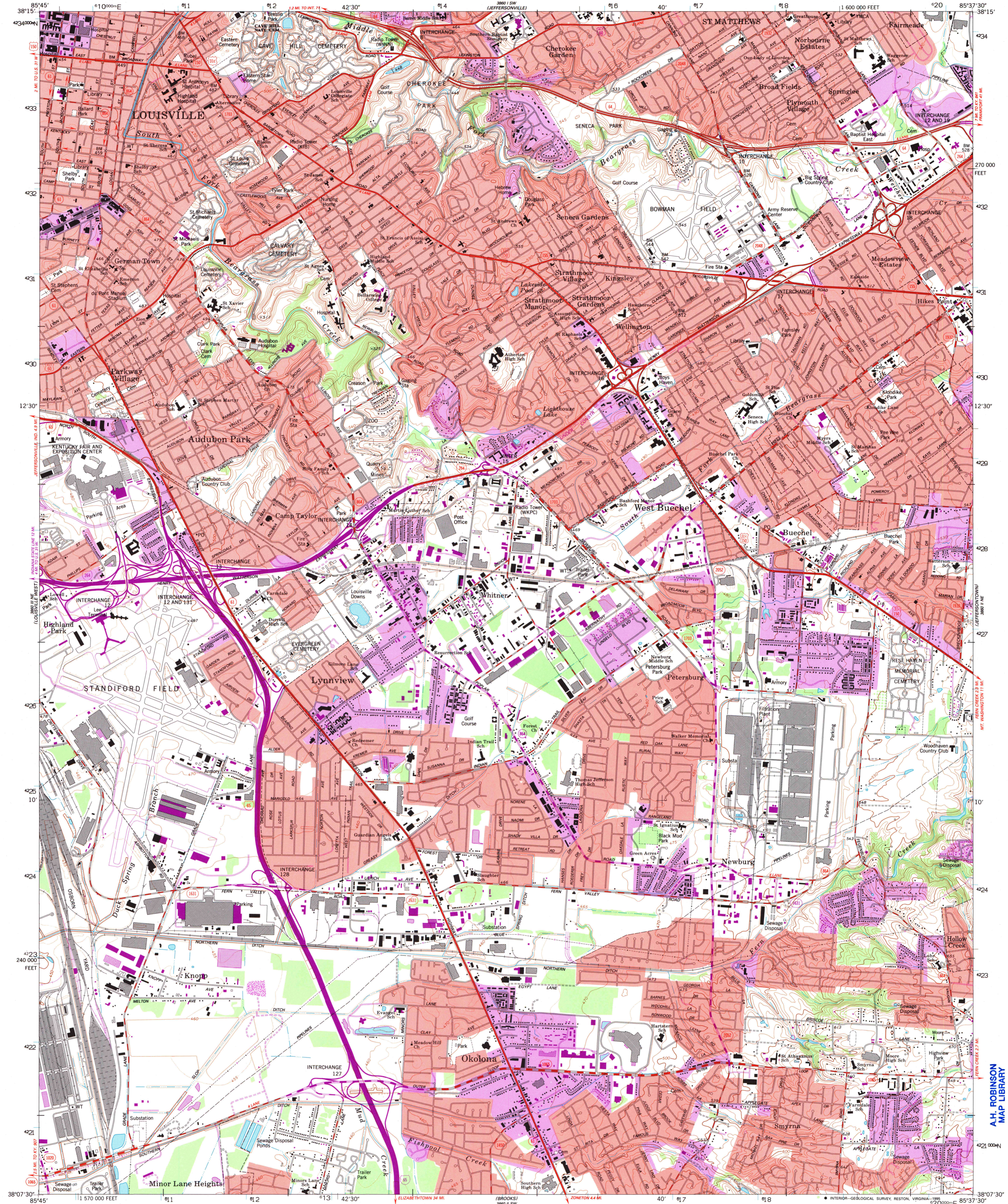
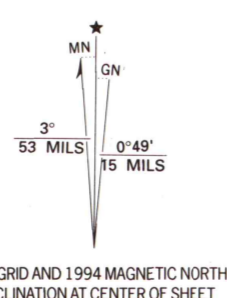


UNITED STATES
DEPARTMENT OF THE INTERIOR
GEOLOGICAL SURVEY

LOUISVILLE EAST QUADRANGLE
KENTUCKY-JEFFERSON CO.
7.5 MINUTE SERIES (TOPOGRAPHIC)



Maped by the Army Map Service and the Geological Survey
Revised by the United States Geological Survey
Control by USGS, NOS/NOAA, USACE, and the City of Louisville
Topography by photogrammetric methods from aerial photographs
taken 1947. Field checked 1950. Revised from aerial photographs
taken 1978. Field checked 1979. Map edited 1982
North American Datum of 1927 (NAD 27). Projection and
10 000-foot ticks: Kentucky coordinate system, north zone
(Lambert conformal conic)
Blue 1000-meter Universal Transverse Mercator ticks, zone 16
North American Datum of 1983 (NAD 83) is shown by dashed
corner ticks. The values of the shift between NAD 27 and NAD 83
for 7.5-minute intersections are obtainable from National Geodetic
Survey NADCON software
Red tint indicates areas in which only landmark buildings are shown



SCALE 1:24 000
1 000 0 1000 2000 3000 4000 5000 6000 7000 FEET
1 KILOMETER
CONTOUR INTERVAL 10 FEET
DOTTED LINES REPRESENT 5-FOOT CONTOURS
NATIONAL GEODETIC VERTICAL DATUM OF 1929
COMPLIES WITH U.S. GEOLOGICAL SURVEY STANDARDS FOR SPATIAL ACCURACY-CLASS 2
FOR SALE BY U.S. GEOLOGICAL SURVEY, DENVER, COLORADO 80225 OR RESTON, VIRGINIA 22092,
AND KENTUCKY GEOLOGICAL SURVEY, LEXINGTON, KENTUCKY 40506,
AND KENTUCKY DEPARTMENT OF COMMERCE, FRANKFORT, KENTUCKY 40601
A FOLDER DESCRIBING TOPOGRAPHIC MAPS AND SYMBOLS IS AVAILABLE ON REQUEST

Revisions shown in purple compiled in cooperation with
State of Kentucky agencies from aerial photographs
taken 1991 and other sources. This information not
field checked. Map edited 1994
Information shown in purple may not meet USGS content
standards and may conflict with previously mapped contours
Purple tint indicates extension of urban areas
ROAD CLASSIFICATION
Primary highway, hard surface
Secondary highway, hard surface
Light-duty road, hard or improved surface
Unimproved road
Interstate Route
U.S. Route
State Route
LOUISVILLE EAST, KY.
38085-B6-TF-024
1982
REVISED 1994
DMA 3860 II NW-SERIES V853

A.H. ROBINSON
MAP LIBRARY
JUN 25 1995
University of Wisconsin
Madison