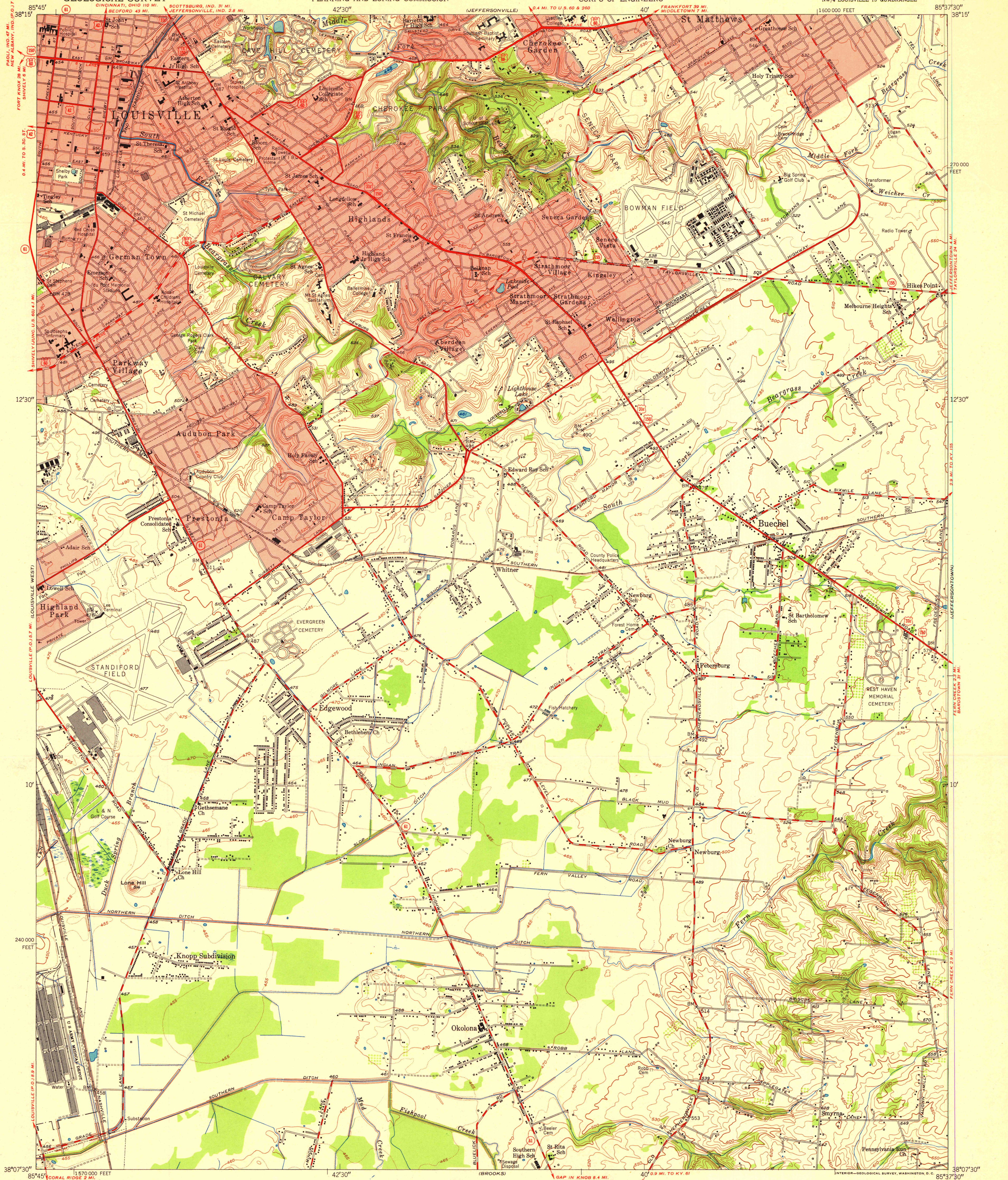


H3

UNITED STATES  
DEPARTMENT OF THE INTERIOR  
GEOLOGICAL SURVEYSTATE OF KENTUCKY  
LOUISVILLE AND JEFFERSON COUNTY  
PLANNING AND ZONING COMMISSIONUNITED STATES  
DEPARTMENT OF THE ARMY  
CORPS OF ENGINEERSLOUISVILLE EAST QUADRANGLE  
KENTUCKY-JEFFERSON CO.  
7.5 MINUTE SERIES (TOPOGRAPHIC)  
NW 1/4 LOUISVILLE 15' QUADRANGLEMapped by the Army Map Service and the Geological Survey  
Edited and published by the Geological SurveyControl by USGS, USC&GS, USCE, and City of Louisville  
Topography from aerial photographs by multiplex methods

Aerial photographs taken 1947. Field check 1950

Polyconic projection. 1927 North American datum  
10,000-foot grid based on Kentucky coordinate system,  
north zoneRed tint indicates areas in which only  
landmark buildings are shownTRUE NORTH  
MAGNETIC NORTH  
APPROXIMATE MEAN  
DECLINATION, 1950

SCALE 1:24000

1000 0 1000 2000 3000 4000 5000 6000 7000 FEET

1 5 0 1 KILOMETER

CONTOUR INTERVAL 10 FEET

DOTTED LINES REPRESENT HALF-INTERVAL CONTOURS

DATUM IS MEAN SEA LEVEL

THIS MAP COMPLIES WITH NATIONAL MAP ACCURACY STANDARDS

FOR SALE BY U. S. GEOLOGICAL SURVEY, WASHINGTON 25, D. C.

AND KENTUCKY AGRICULTURAL AND INDUSTRIAL DEVELOPMENT BOARD, FRANKFORT, KENTUCKY

A FOLDER DESCRIBING TOPOGRAPHIC MAPS AND SYMBOLS IS AVAILABLE ON REQUEST

## ROAD CLASSIFICATION

Heavy-duty ———— Lane is Lane Light-duty ————

Medium-duty ———— Lane is Lane Unimproved dirt ————

U. S. Route State Route

UNIVERSITY OF WISCONSIN  
Department of GeographyLOUISVILLE EAST, KY.  
NW 1/4 LOUISVILLE 15' QUADRANGLE  
N3807.5—W8537.5/7.5

EDITION OF 1951