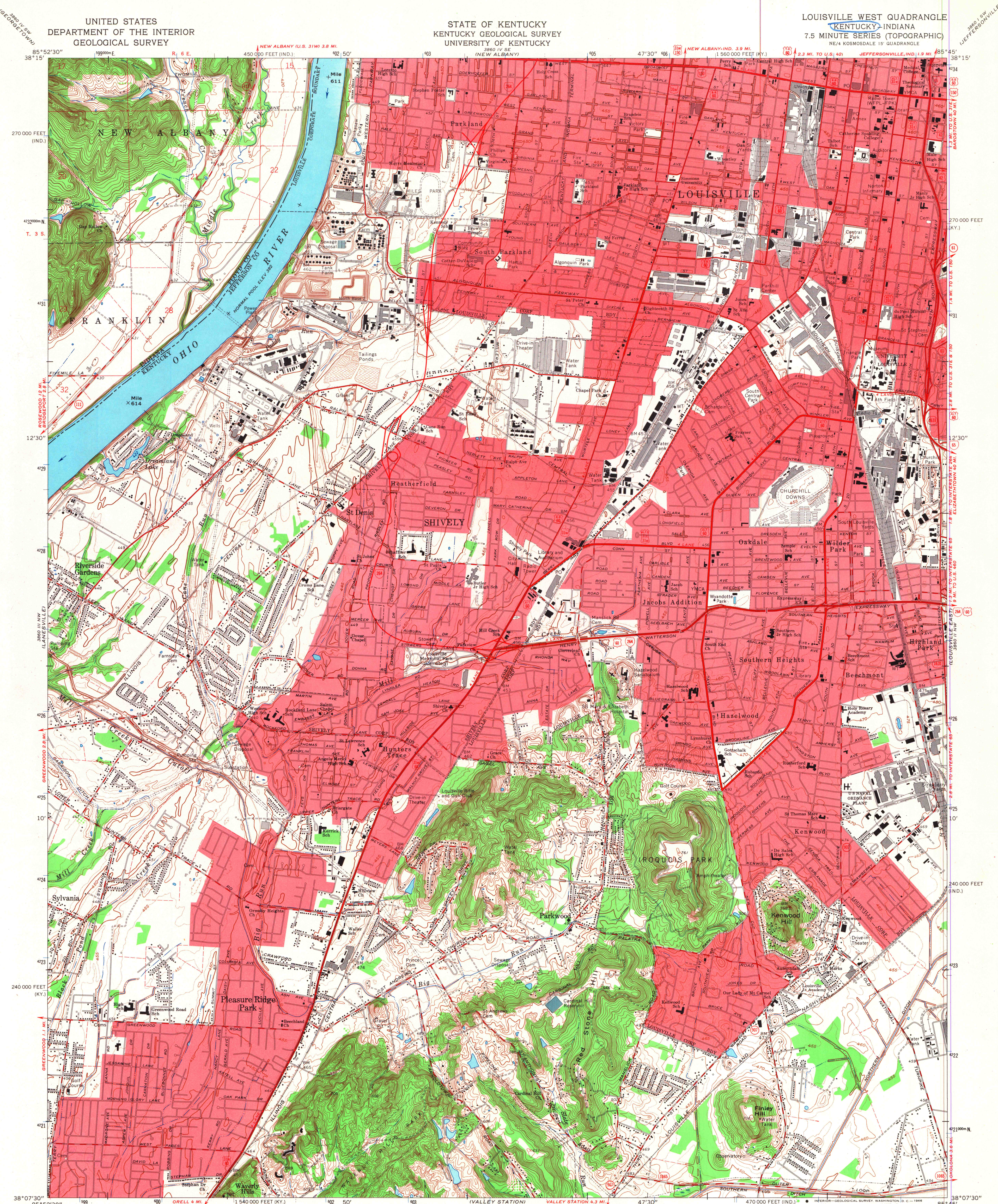


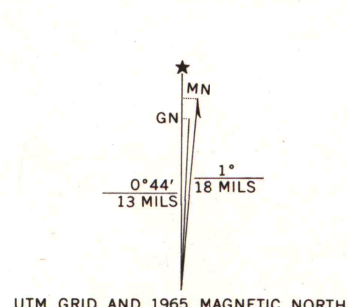
UNITED STATES  
DEPARTMENT OF THE INTERIOR  
GEOLOGICAL SURVEY

STATE OF KENTUCKY  
KENTUCKY GEOLOGICAL SURVEY  
UNIVERSITY OF KENTUCKY

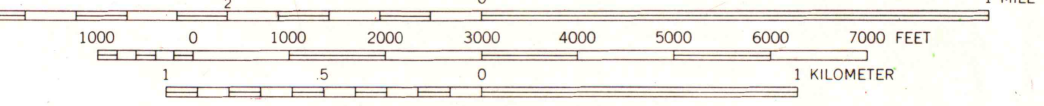
LOUISVILLE WEST QUADRANGLE  
KENTUCKY-INDIANA  
7.5 MINUTE SERIES (TOPOGRAPHIC)



Mapped by the Army Map Service and the Geological Survey  
Edited and published by the Geological Survey  
Control by USGS, USC&GS, USCE, and the City of Louisville  
Topography by photogrammetric methods from aerial photographs  
taken 1947. Field checked 1950. Revised by the Geological Survey 1965  
Polyconic projection. 1927 North American datum  
10,000-foot grids based on Kentucky coordinate system,  
north zone, and Indiana coordinate system, east zone  
1000-meter Universal Transverse Mercator grid ticks,  
zone 16, shown in blue  
Fine red dashed lines indicate selected fence and field lines where  
generally visible on aerial photographs. This information is unchecked  
The state boundary as shown represents the approximate position  
of the low water line as determined from U. S. Corps of Engineers  
Ohio River charts, surveyed 1912, and supplementary information  
Red tint indicates areas in which only landmark buildings are shown



SCALE 1:24,000



CONTOUR INTERVAL 10 FEET  
DOTTED LINES REPRESENT 5-FOOT CONTOURS  
DATUM IS MEAN SEA LEVEL

THIS MAP COMPLIES WITH NATIONAL MAP ACCURACY STANDARDS  
FOR SALE BY U. S. GEOLOGICAL SURVEY, WASHINGTON, D. C. 20242,  
KENTUCKY GEOLOGICAL SURVEY, LEXINGTON, KENTUCKY,  
KENTUCKY DEPARTMENT OF COMMERCE, FRANKFORT, KENTUCKY  
AND INDIANA DEPARTMENT OF NATURAL RESOURCES, INDIANAPOLIS, INDIANA  
A FOLDER DESCRIBING TOPOGRAPHIC MAPS AND SYMBOLS IS AVAILABLE ON REQUEST

MAP AND AIR PHOTO LIBRARY  
University of Wisconsin



ROAD CLASSIFICATION  
Heavy-duty ——— Light-duty ———  
Medium-duty ——— Unimproved dirt ———  
Interstate Route ——— U. S. Route ——— State Route ———

LOUISVILLE WEST, KY.-IND.  
NE 1/4 KOSMOSDALE 15' QUADRANGLE  
N3807.5—W8545.7.5

1965  
AMS 3860 III NE—SERIES V653