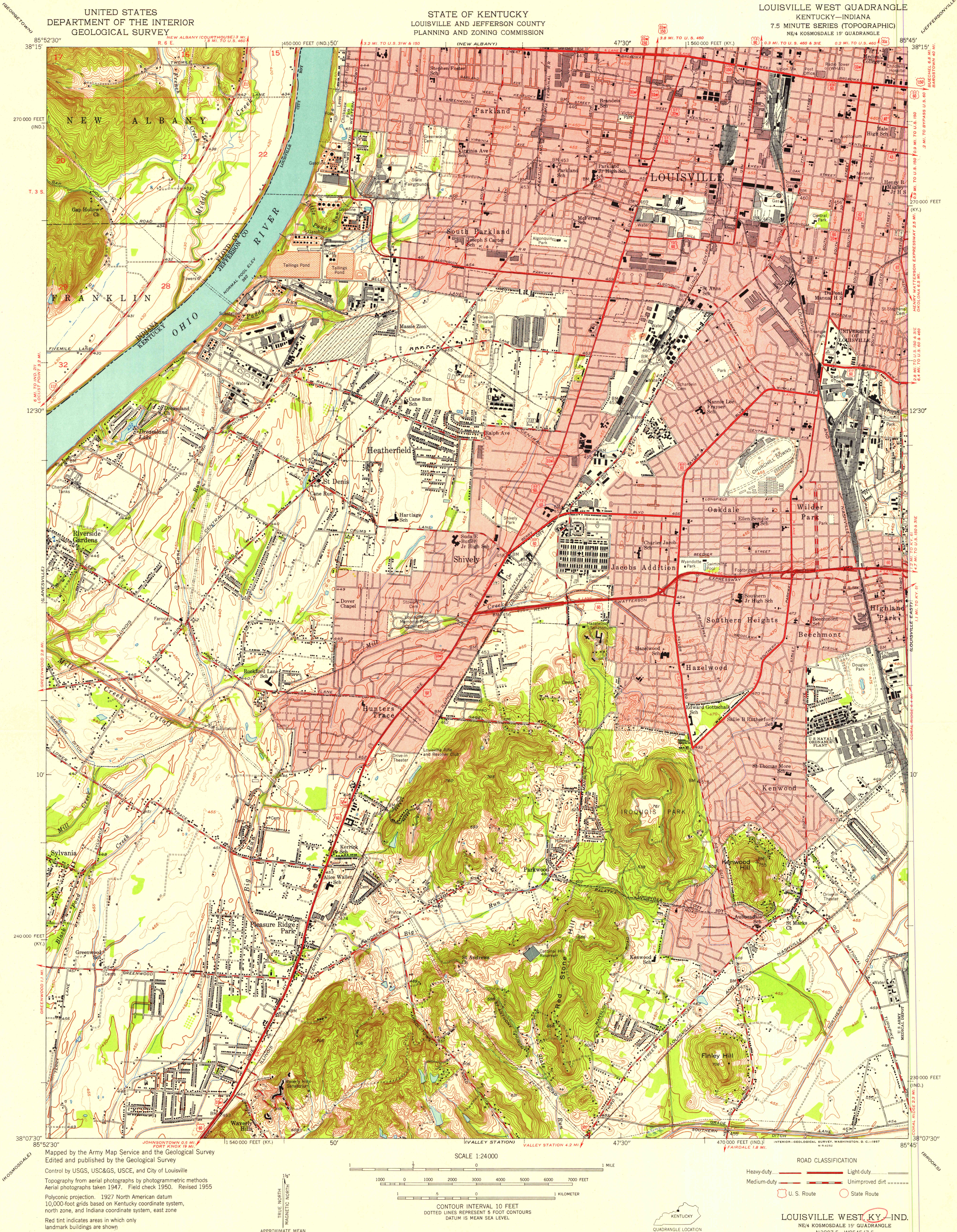


UNITED STATES
DEPARTMENT OF THE INTERIOR
GEOLOGICAL SURVEY

STATE OF KENTUCKY
LOUISVILLE AND JEFFERSON COUNTY
PLANNING AND ZONING COMMISSION

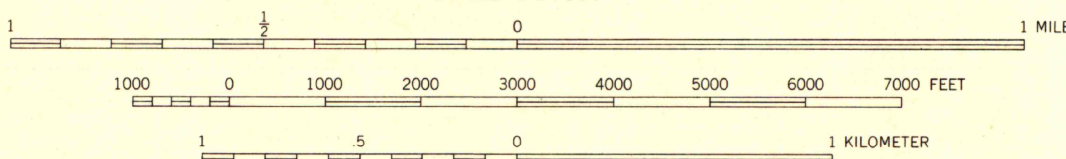
LOUISVILLE WEST QUADRANGLE
KENTUCKY-INDIANA
7.5 MINUTE SERIES (TOPOGRAPHIC)
NE/4 KOSMOSDALE 15' QUADRANGLE



Map by the Army Map Service and the Geological Survey
Edited and published by the Geological Survey
Control by USGS, USC&GS, USCE, and City of Louisville
Topography from aerial photographs by photogrammetric methods
Aerial photographs taken 1947. Field check 1950. Revised 1955
Polyconic projection. 1927 North American datum
10,000-foot grids based on Kentucky coordinate system,
north zone, and Indiana coordinate system, east zone
Red tint indicates areas in which only
landmark buildings are shown

TRUE NORTH
MAGNETIC NORTH
APPROXIMATE MEAN
DECLINATION, 1955

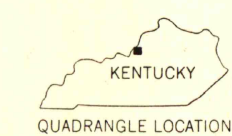
SCALE 1:24000



CONTOUR INTERVAL 10 FEET
DOTTED LINES REPRESENT 5 FOOT CONTOURS
DATUM IS MEAN SEA LEVEL

THIS MAP COMPLIES WITH NATIONAL MAP ACCURACY STANDARDS
FOR SALE BY U. S. GEOLOGICAL SURVEY, WASHINGTON 25, D. C.
KENTUCKY DEPARTMENT OF ECONOMIC DEVELOPMENT, FRANKFORT, KENTUCKY
AND INDIANA DEPARTMENT OF CONSERVATION, INDIANAPOLIS, INDIANA
A FOLDER DESCRIBING TOPOGRAPHIC MAPS AND SYMBOLS IS AVAILABLE ON REQUEST

ROAD CLASSIFICATION
Heavy-duty ——— Light-duty ———
Medium-duty ——— Unimproved dirt ———
U. S. Route ——— State Route ———



LOUISVILLE WEST, KY-IND.
NE/4 KOSMOSDALE 15' QUADRANGLE
N3807.5-W8545.7.5

1955

UNIVERSITY OF WISCONSIN
Department of Geography