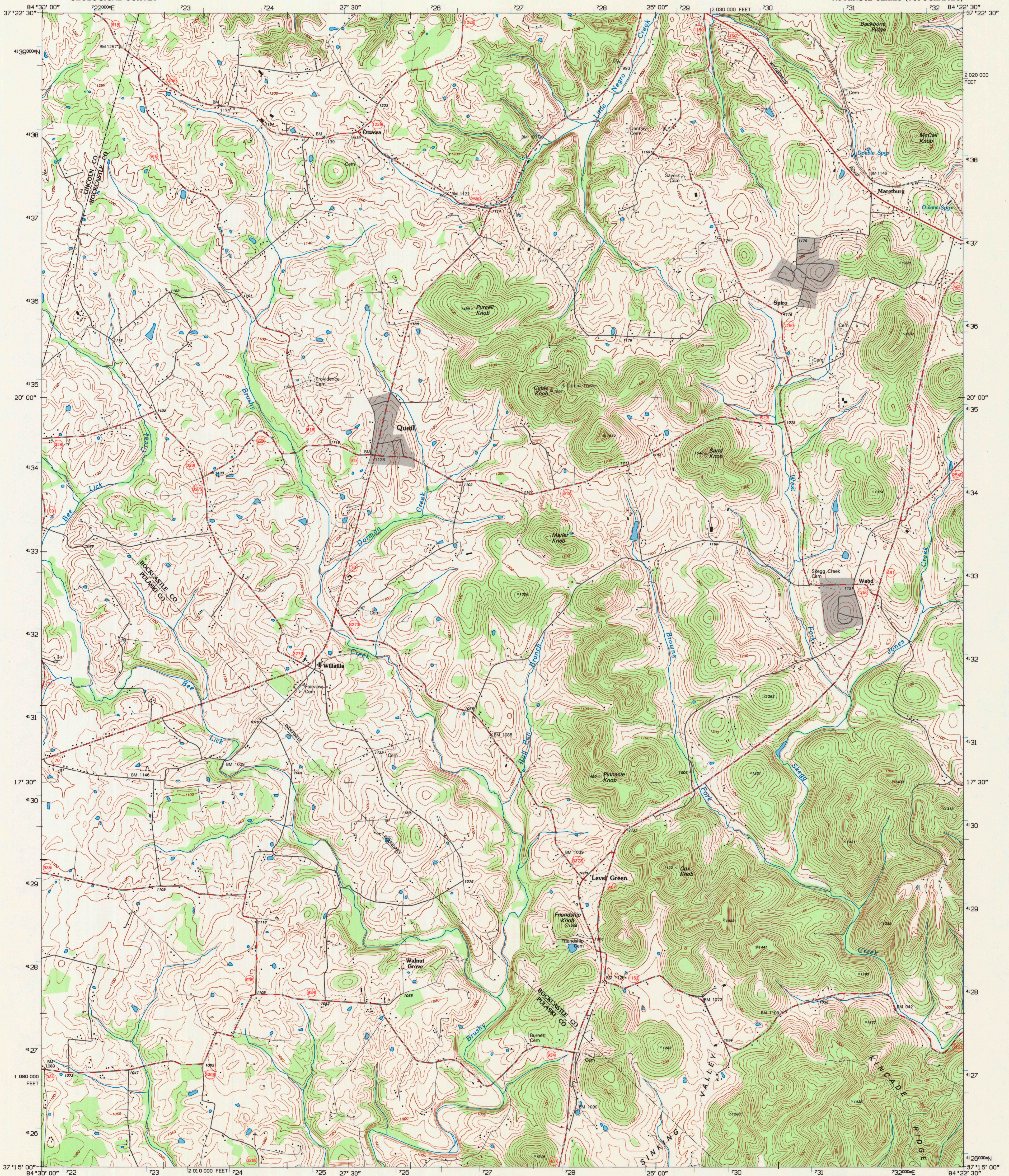
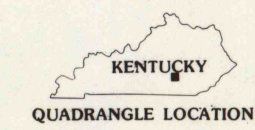
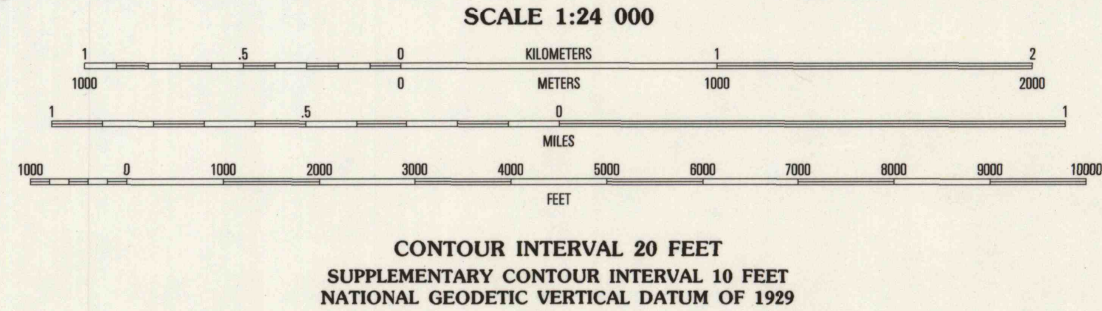
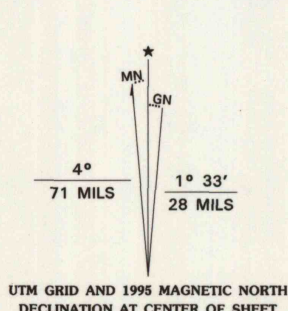


UNITED STATES
DEPARTMENT OF THE INTERIOR
GEOLOGICAL SURVEY

MARETBURG QUADRANGLE
KENTUCKY
7.5-MINUTE SERIES (TOPOGRAPHIC)



Produced by the United States Geological Survey
Compiled by photogrammetric methods from imagery dated 1950
Field checked 1953. Revised in cooperation with State of
Kentucky agencies from imagery dated 1993. PLSS and survey
control current as of 1993. Map edited 1995. Contours not
revised. Contours that conflict with revised planimetry are
dashed.
North American Datum of 1983 (NAD 83). Projection and
blue 1000-meter ticks: Universal Transverse Mercator, zone 16
10 000-foot ticks: Kentucky Coordinate System of 1983 (south zone)
North American Datum of 1927 (NAD 27) is shown by dashed
corner ticks. The values of the shift between NAD 83 and NAD 27
for 7.5-minute intersections are obtained from National Geodetic
Survey NADCON software



QUADRANGLE LOCATION			
1	2	3	1 Crab Orchard
4	5	6	2 Brodhead
7	8	9	3 Wildie
10	11	12	4 Woodstock
13	14	15	5 Mount Vernon
16	17	18	6 Bolivar
19	20	21	7 Shopville
22	23	24	8 Billows

ROAD CLASSIFICATION

Primary highway	Light-duty road, hard or
hard surface	improved surface
Secondary highway	Unimproved road
hard surface	

Interstate Route U.S. Route State Route

USGS NHD HISTORICAL
FEB 1996
REC'D FILE COPY

MARETBURG, KY
37084-C4-TF-024
1993
DMA 4158 IV SW - SERIES V853

