

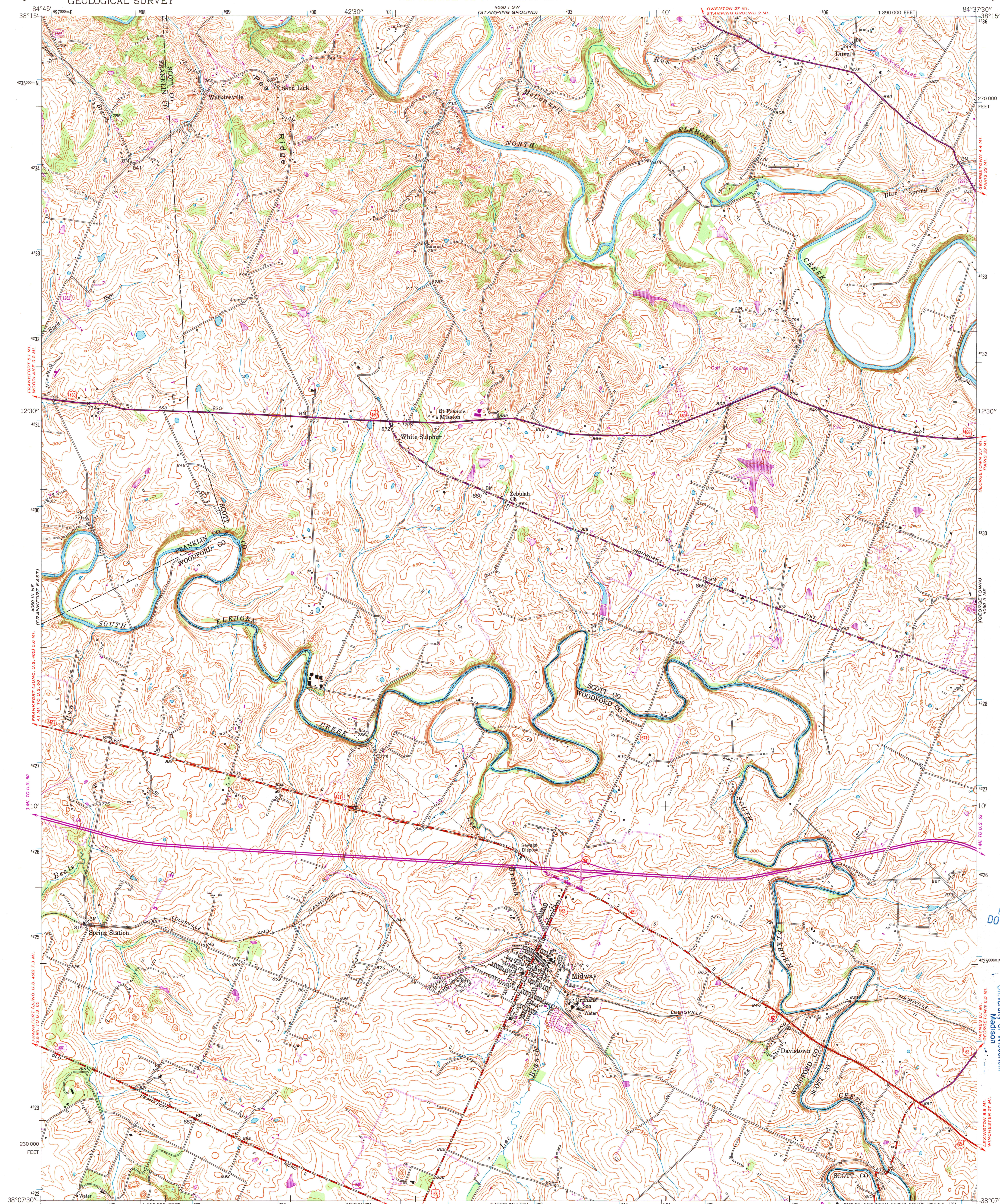
4000 U.S.
(SWITZER)

UNITED STATES
DEPARTMENT OF THE INTERIOR
GEOLOGICAL SURVEY

STATE OF KENTUCKY
AGRICULTURAL AND INDUSTRIAL DEVELOPMENT BOARD

MIDWAY QUADRANGLE
KENTUCKY
7.5 MINUTE SERIES (TOPOGRAPHIC)

4000 U.S.
(LAW)



U.S. Regional
Depository Copy
DO NOT DISCARD

A.H. ROBINSON
MAP LIBRARY
DEC 26 1991
University of Wisconsin
Madison

Mapped, edited, and published by the Geological Survey

Control by USGS and USC&GS

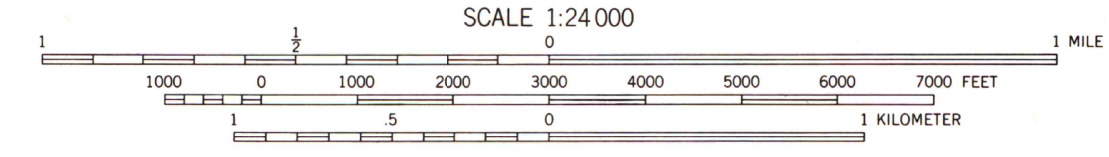
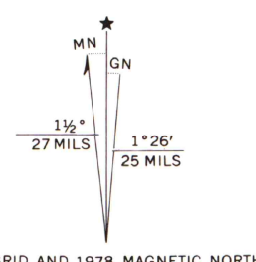
Topography from aerial photographs by stereophotogrammetric methods. Aerial photographs taken 1952. Field check 1953-1954

Polyconic projection. 1927 North American datum
10,000-foot grid based on Kentucky coordinate system,
north zone
1000 meter Universal Transverse Mercator grid ticks,
zone 16, shown in blue

The difference between 1927 North American Datum and North
American Datum of 1983 (NAD 83) for 7.5-minute intersections
is given in USGS Bulletin 1875. The NAD 83 is shown by
dashed corner ticks

Map photoinspected 1984

No major culture or drainage changes observed



CONTOUR INTERVAL 10 FEET
NATIONAL GEODETIC VERTICAL DATUM OF 1929

THIS MAP COMPLIES WITH NATIONAL MAP ACCURACY STANDARDS
FOR SALE BY U.S. GEOLOGICAL SURVEY, DENVER, COLORADO 80225, OR RESTON, VIRGINIA 22092
KENTUCKY GEOLOGICAL SURVEY, LEXINGTON, KENTUCKY 40506
AND KENTUCKY DEPARTMENT OF COMMERCE, FRANKFORT, KENTUCKY 40601
A FOLDER DESCRIBING TOPOGRAPHIC MAPS AND SYMBOLS IS AVAILABLE ON REQUEST



ROAD CLASSIFICATION	
Heavy-duty	4 LANE 16 LANE
Medium-duty	4 LANE 16 LANE
U.S. Route	State Route
Interstate Route	

MIDWAY, KY.

38084-86-TF-024
PHOTOINSPECTED 1984
1954
PHOTOREVISED 1978
DMA 4060 II NW-SERIES V853

Revisions shown in purple compiled from aerial photographs
taken 1976 and other source data. Corners adjusted adjacent
to certain photorevised hydrographic features. This information
not field checked. Map edited 1978