

UNITED STATES
DEPARTMENT OF THE INTERIOR
GEOLOGICAL SURVEY

STATE OF KENTUCKY
KENTUCKY GEOLOGICAL SURVEY
UNIVERSITY OF KENTUCKY

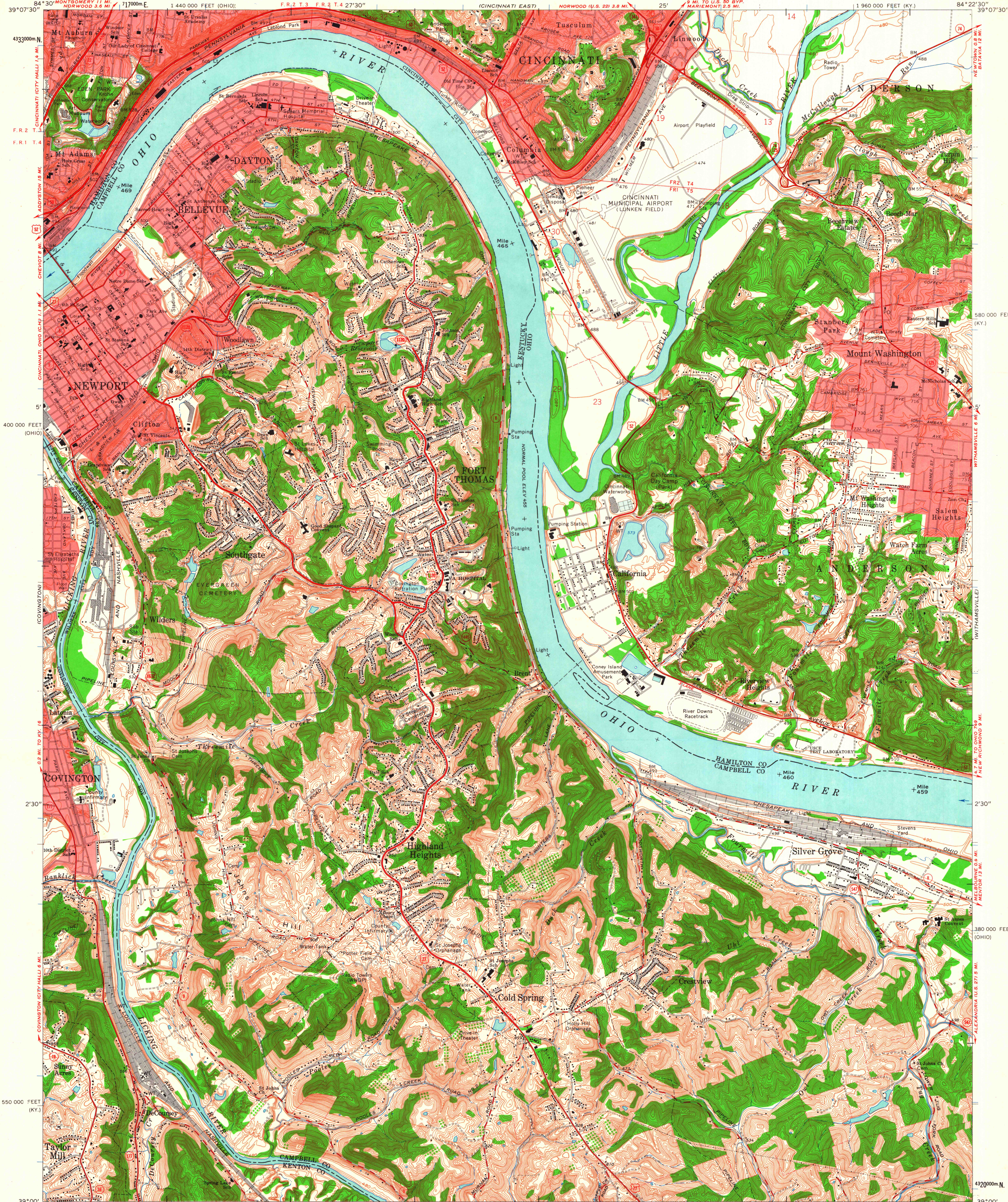
NEWPORT QUADRANGLE
KENTUCKY-OHIO
7.5 MINUTE SERIES (TOPOGRAPHIC)

SW/4 EAST CINCINNATI 15' QUADRANGLE

1 960 000 FEET (KY.)

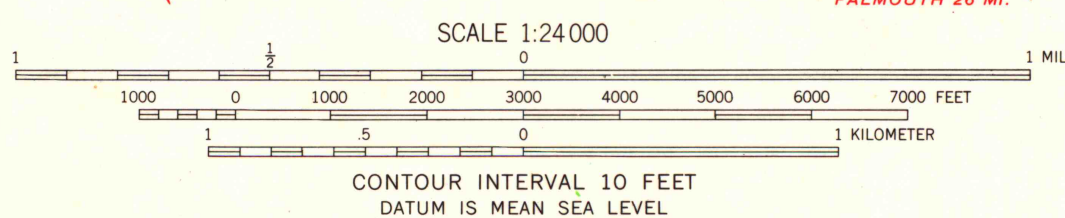
84°22'30"

39°07'30"

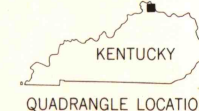


Mapped, edited, and published by the Geological Survey
Control by USGS, USCGS, USCE, and City of Cincinnati
Topography by photogrammetric methods from aerial photographs
taken 1949, and in part by the City of Cincinnati
Field checked 1951, 1952, and 1954. Revised 1961
Polyconic projection. 1927 North American datum
10,000-foot grids based on Kentucky coordinate system,
north zone, and Ohio coordinate system, south zone
1000-meter Universal Transverse Mercator grid ticks, zone 16, shown in blue
Fine red dashed lines indicate selected fence and field lines where
generally visible on aerial photographs. This information is unchecked
Red tint indicates areas in which only landmark buildings are shown
The state boundary as shown represents the approximate position
of the low water line as determined from U.S. Corps of Engineers
Ohio River charts, surveyed 1913, and supplementary information
Area east of the Little Miami River lies within the Virginia Military District
Area west of the Little Miami River lies within the Between the Miamis
Land lines based on the Great Miami River Base. Dotted land lines
established by private subdivision of the Symmes Purchase

TRUE NORTH
MAGNETIC NORTH
APPROXIMATE MEAN
DECLINATION, 1961



THIS MAP COMPLIES WITH NATIONAL MAP ACCURACY STANDARDS
FOR SALE BY U.S. GEOLOGICAL SURVEY, WASHINGTON 25, D. C.,
KENTUCKY GEOLOGICAL SURVEY, LEXINGTON, KENTUCKY,
AND KENTUCKY DEPARTMENT OF COMMERCE, FRANKFORT, KENTUCKY
A FOLDER DESCRIBING TOPOGRAPHIC MAPS AND SYMBOLS IS AVAILABLE ON REQUEST



MAP AND AIR PHOTO LIBRARY
University of Wisconsin

ROAD CLASSIFICATION
Heavy-duty ——— Light-duty ———
Medium-duty ——— Unimproved dirt ———
U. S. Route ——— State Route ———

NEWPORT, KY.-OHIO
SW/4 EAST CINCINNATI 15' QUADRANGLE
N3900-W8422.5/7.5

1961