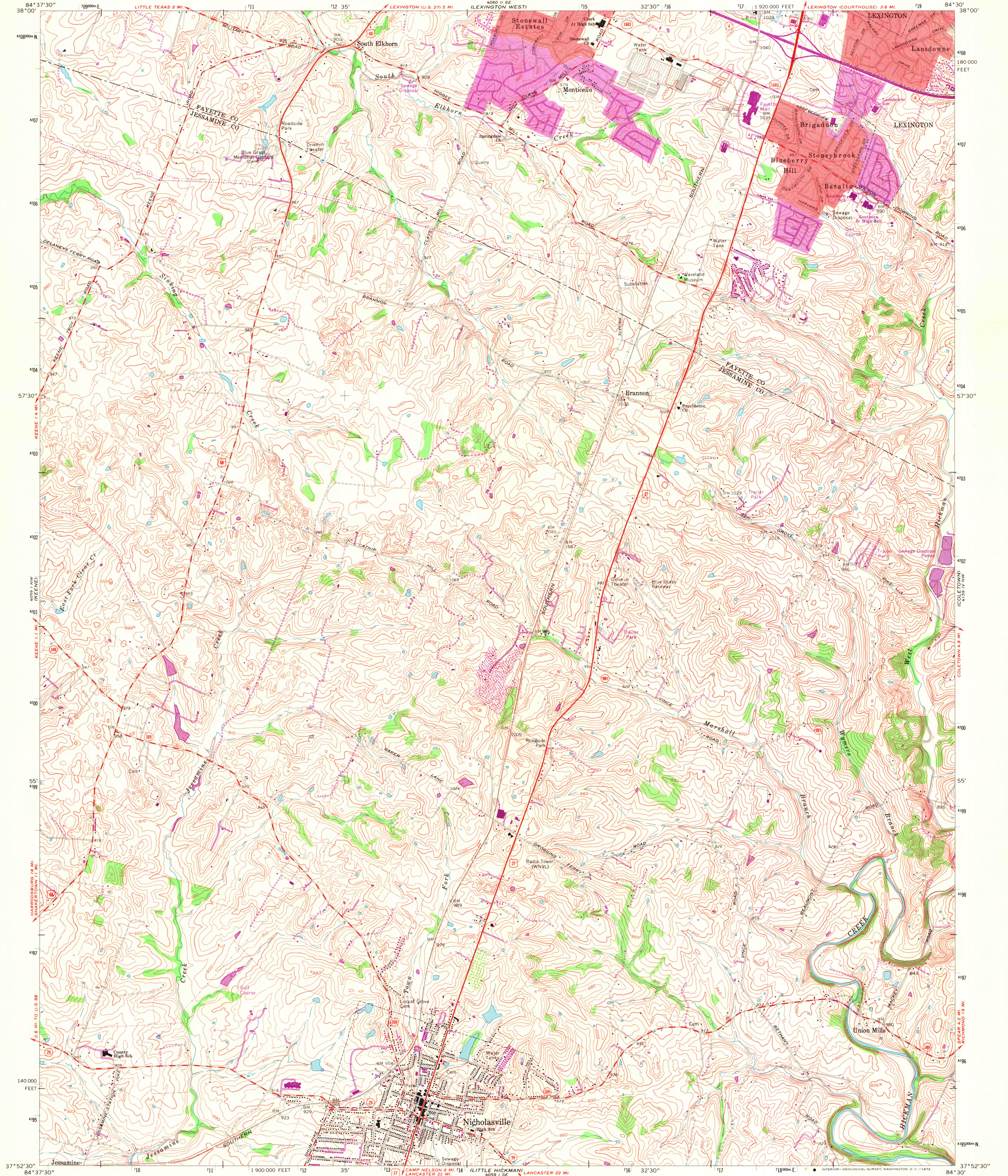


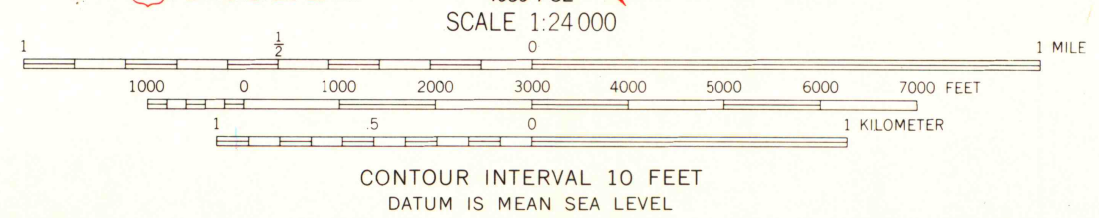
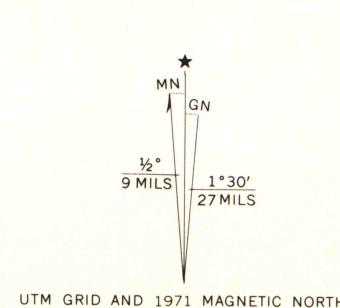
UNITED STATES  
DEPARTMENT OF THE INTERIOR  
GEOLOGICAL SURVEY

STATE OF KENTUCKY  
KENTUCKY GEOLOGICAL SURVEY  
UNIVERSITY OF KENTUCKY

NICHOLASVILLE QUADRANGLE  
KENTUCKY  
7.5 MINUTE SERIES (TOPOGRAPHIC)  
NE/4 NICHOLASVILLE 15' QUADRANGLE



Mapped, edited, and published by the Geological Survey  
Control by USGS, USCGS, and Kentucky Geodetic Survey  
Topography by photogrammetric methods from aerial photographs  
taken 1950. Field checked 1952. Revised 1965  
Polyconic projection. 1927 North American datum  
10,000-foot grid based on Kentucky coordinate system,  
north zone  
1000-meter Universal Transverse Mercator grid ticks,  
zone 16, shown in blue  
Fine red dashed lines indicate selected fence and field lines where  
generally visible on aerial photographs. This information is unchecked  
Red tint indicates areas in which only landmark buildings are shown



THIS MAP COMPLIES WITH NATIONAL MAP ACCURACY STANDARDS  
FOR SALE BY U.S. GEOLOGICAL SURVEY, WASHINGTON, D. C. 20242.  
KENTUCKY GEOLOGICAL SURVEY, LEXINGTON, KENTUCKY 40506,  
AND KENTUCKY DEPARTMENT OF COMMERCE, FRANKFORT, KENTUCKY 40601  
A FOLDER DESCRIBING TOPOGRAPHIC MAPS AND SYMBOLS IS AVAILABLE ON REQUEST

Revisions shown in purple compiled in cooperation with  
Kentucky Geological Survey from aerial photographs  
taken 1971. This information not field checked  
Purple tint indicates extension of urban areas

ROAD CLASSIFICATION  
Heavy-duty ——— Light-duty ———  
Medium-duty ——— Unimproved dirt ———  
U. S. Route ——— State Route ———

NICHOLASVILLE, KY.  
NE/4 NICHOLASVILLE 15' QUADRANGLE  
N3752.5—W8430/7.5

1965  
PHOTOREVISED 1971  
AMS 4059 1 NE—SERIES V853