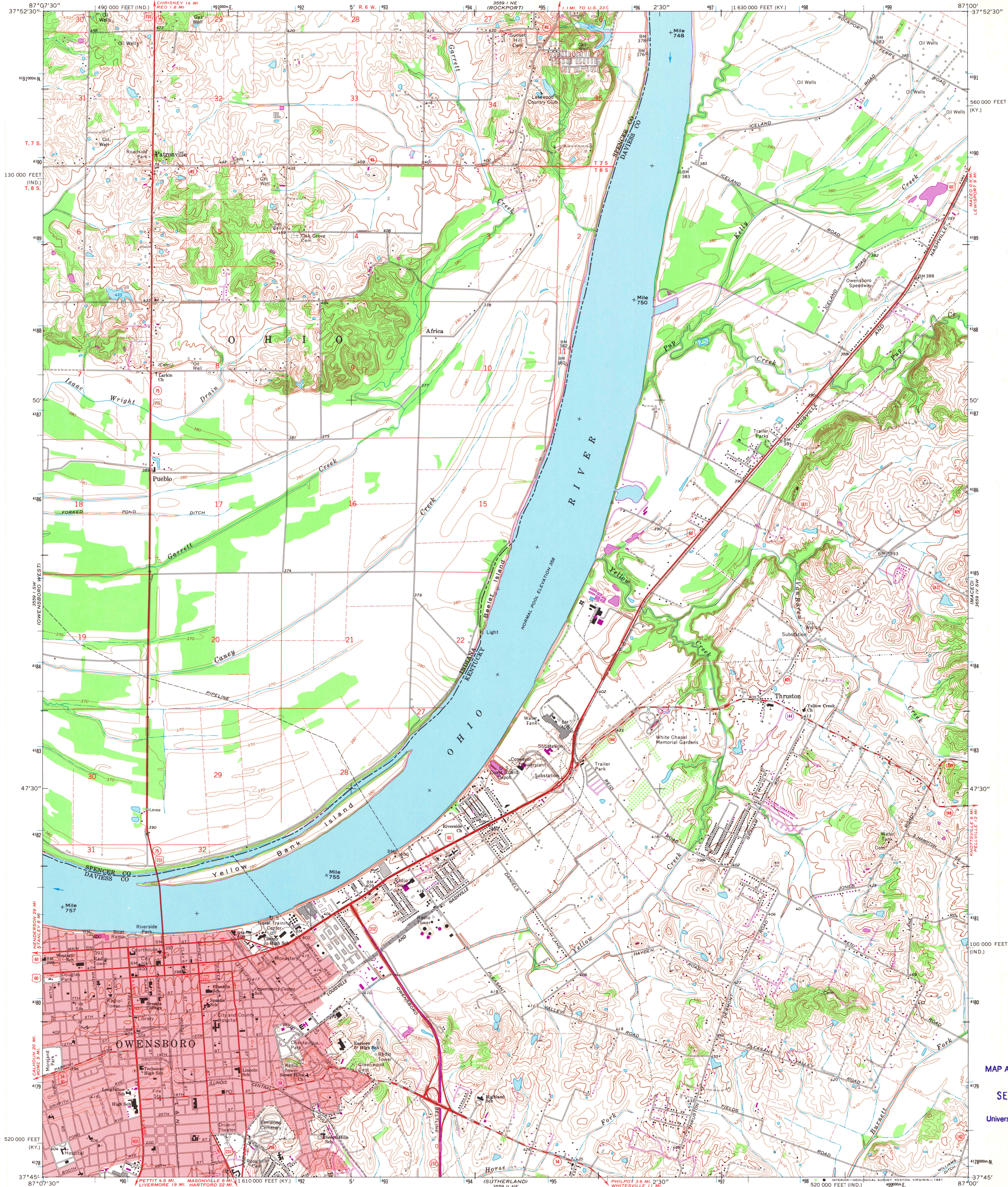


UNITED STATES  
DEPARTMENT OF THE INTERIOR  
GEOLOGICAL SURVEY

STATE OF KENTUCKY  
KENTUCKY GEOLOGICAL SURVEY  
UNIVERSITY OF KENTUCKY

OWENSBORO EAST QUADRANGLE  
KENTUCKY-INDIANA  
7.5 MINUTE SERIES (TOPOGRAPHIC)



Mapped, edited, and published by the Geological Survey

Control by USGS, NOS/NOAA, and USCE

Planimetry by photogrammetric methods from aerial photographs

taken 1950. Topography by planimetry surveys 1951-52.

Revised from aerial photographs taken 1967. Field checked 1967

Polyconic projection

10,000-foot grids based on Kentucky coordinate system, south zone,

and Indiana coordinate system, west zone

1000-meter Universal Transverse Mercator grid ticks, zone 16, shown in blue

1927 North American Datum. To place on the predicted

North American Datum 1983, move the projection lines 4 meters

south and 1 meter east as shown by dashed corner ticks

Fine red dashed lines indicate selected fence and field lines where

generally visible on aerial photographs. This information is not checked

Red tint indicates areas in which only landmark buildings are shown

SCALE 1:24,000

CONTOUR INTERVAL 10 FEET

NATIONAL GEODETIC VERTICAL DATUM OF 1929

UTM GRID AND 1980 MAGNETIC NORTH

DECLINATION AT CENTER OF SHEET

THIS MAP COMPLIES WITH NATIONAL MAP ACCURACY STANDARDS

FOR SALE BY U. S. GEOLOGICAL SURVEY, RESTON, VIRGINIA 22092

KENTUCKY GEOLOGICAL SURVEY, LEXINGTON, KENTUCKY 40506

KENTUCKY DEPARTMENT OF COMMERCE, FRANKFORT, KENTUCKY 40601,

AND INDIANA DEPARTMENT OF NATURAL RESOURCES, INDIANAPOLIS, INDIANA 46204

A FOLDER DESCRIBING TOPOGRAPHIC MAPS AND SYMBOLS IS AVAILABLE ON REQUEST

The state boundary as shown represents the approximate position of the low water line as determined from U. S. Corps of Engineers Ohio River charts, surveyed in 1912, and supplementary information

Revisions shown in purple compiled in cooperation with State of Indiana agencies from aerial photographs taken 1978 and other source data. Contours adjusted adjacent to certain photorevised hydrographic features. This information not field checked

Map edited 1980

ROAD CLASSIFICATION

Primary highway, all weather, hard surface

Light-duty road, all weather, improved surface

Secondary highway, all weather, hard surface

Unimproved road, fair or dry weather

U. S. Route

State Route

OWENSBORO EAST, KY.-IND.

N3745-W8700/7.5

1967

PHOTOREVISED 1980

DMA 5559 1 SE-SERIES V853

MAP AND AIR PHOTO

LIBRARY

SEP 14 1981

University of Wisconsin

Madison