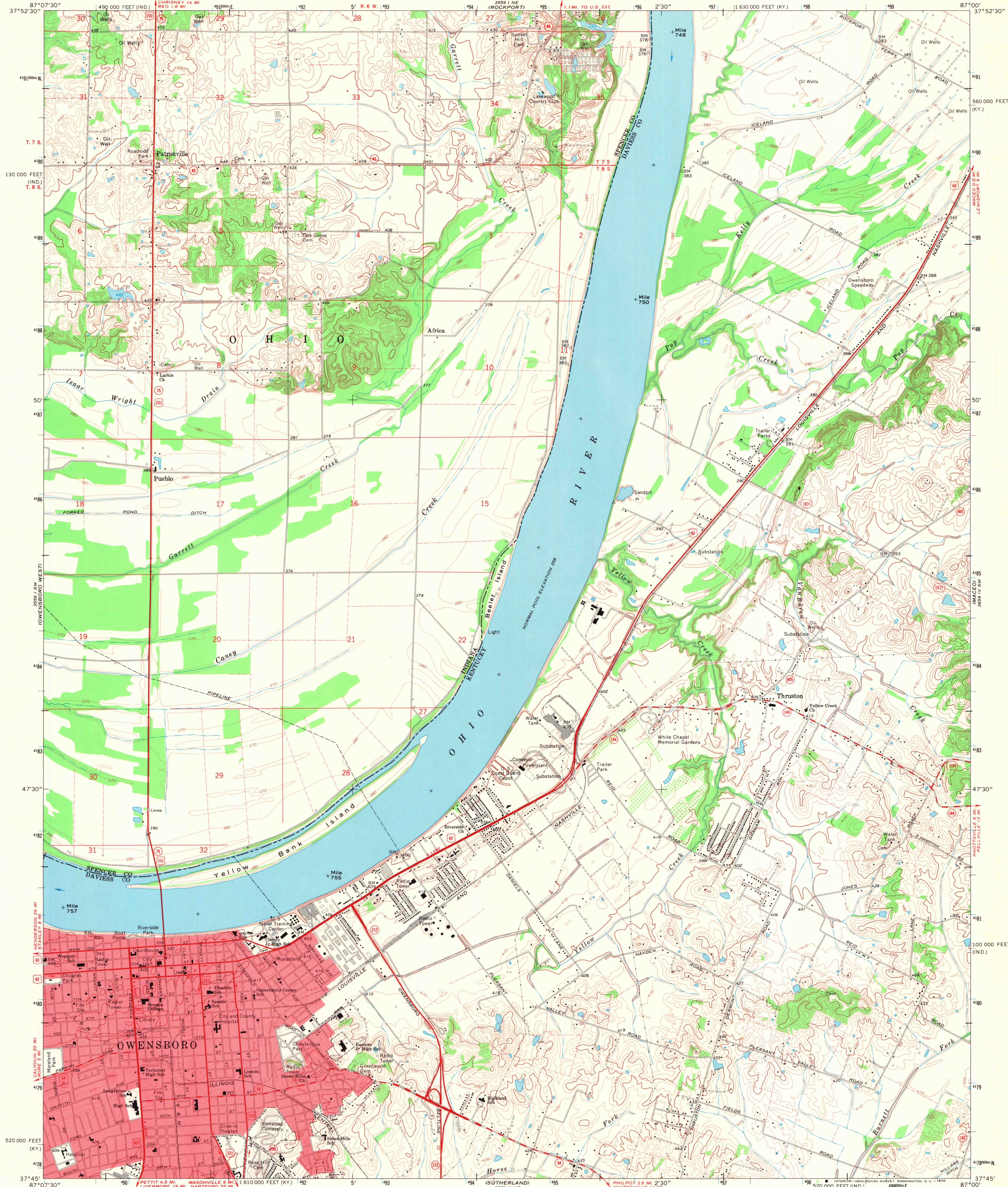


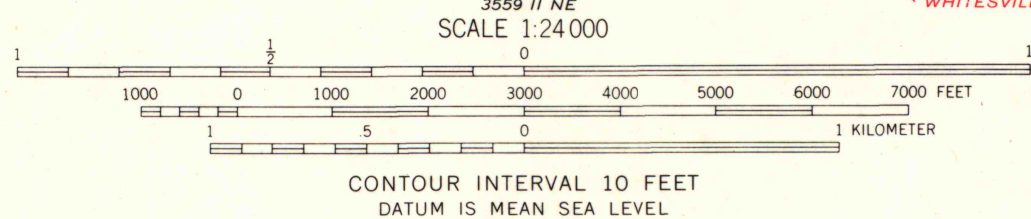
UNITED STATES
DEPARTMENT OF THE INTERIOR
GEOLOGICAL SURVEY

STATE OF KENTUCKY
KENTUCKY GEOLOGICAL SURVEY
UNIVERSITY OF KENTUCKY

OWENSBORO EAST QUADRANGLE
KENTUCKY-INDIANA
7.5 MINUTE SERIES (TOPOGRAPHIC)
SE/4 OWENSBORO 15' QUADRANGLE

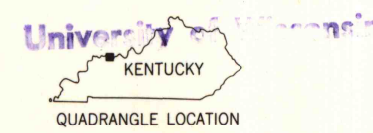


Mapped, edited, and published by the Geological Survey
Control by USGS, USC&GS, and USCE
Planimetry by photogrammetric methods from aerial photographs
taken 1950. Topography by planetable surveys 1951-52.
Revised from aerial photographs taken 1967. Field checked 1967
Polycyclic projection. 1927 North American datum
10,000-foot grids based on Kentucky coordinate system, south zone,
and Indiana coordinate system, west zone
1000-meter Universal Transverse Mercator grid ticks, zone 16, shown in blue
Fine red dashed lines indicate selected fence and field lines where
generally visible on aerial photographs. This information is unchecked
Red tint indicates area in which only landmark buildings are shown
The state boundary as shown represents the approximate position
of the low water line as determined from U. S. Corps of Engineers
Ohio River Charts, surveyed in 1912, and supplementary information



THIS MAP COMPLIES WITH NATIONAL MAP ACCURACY STANDARDS
FOR SALE BY U. S. GEOLOGICAL SURVEY, WASHINGTON, D. C. 20242,
KENTUCKY GEOLOGICAL SURVEY, LEXINGTON, KENTUCKY 40506,
KENTUCKY DEPARTMENT OF COMMERCE, FRANKFORT, KENTUCKY 40601,
AND INDIANA DEPARTMENT OF NATURAL RESOURCES, INDIANAPOLIS, INDIANA 46204
A FOLDER DESCRIBING TOPOGRAPHIC MAPS AND SYMBOLS IS AVAILABLE ON REQUEST

FEB 12 1971



ROAD CLASSIFICATION
Primary highway, all weather, Light-duty road, all weather,
hard surface, improved surface
Secondary highway, all weather, Unimproved road, fair or dry
hard surface, weather
U. S. Route State Route

OWENSBORO EAST, KY-IND.
SE/4 OWENSBORO 15' QUADRANGLE
N3745-W8700/7.5

1967

AMS 3559 I SE-SERIES V853