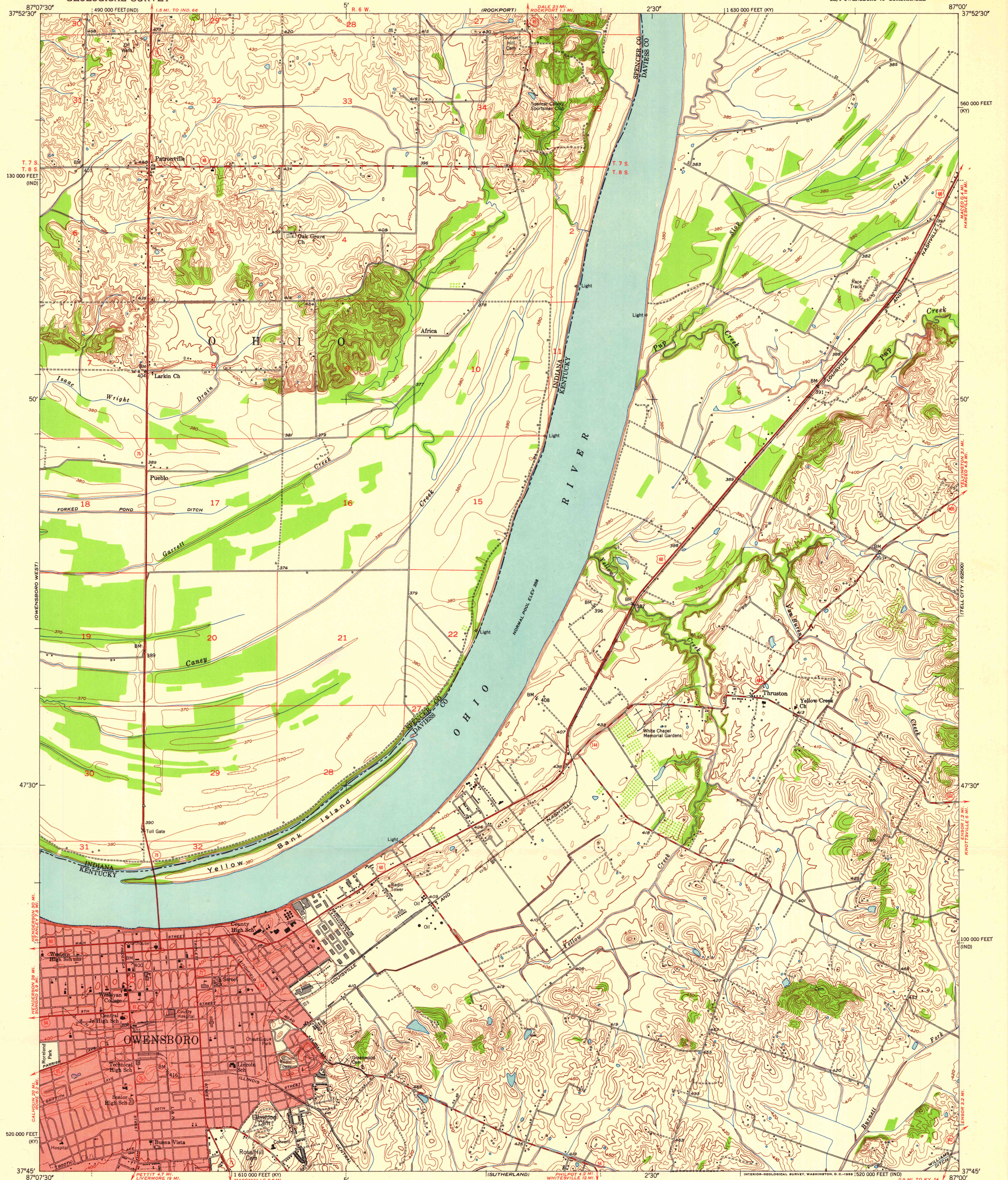


UNITED STATES  
DEPARTMENT OF THE INTERIOR  
GEOLOGICAL SURVEY

OWENSBORO EAST QUADRANGLE  
KENTUCKY-INDIANA  
7.5 MINUTE SERIES (TOPOGRAPHIC)  
SE/4 OWENSBORO 15' QUADRANGLE



Maped, edited, and published by the Geological Survey  
Kentucky area mapped in cooperation with the  
State of Kentucky, Agricultural and Industrial Development Board  
Control by USGS, USC&GS, and USCE

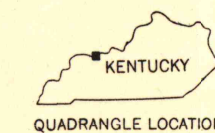
Culture and drainage in part compiled from  
aerial photographs taken 1950  
Topography by plane-table surveys 1951-1952

Polyconic projection. 1927 North American datum  
10,000-foot grids based on Kentucky coordinate system,  
south zone, and Indiana coordinate system, west zone  
Red tint indicates area in which only  
landmark buildings are shown

TRUE NORTH  
MAGNETIC NORTH  
APPROXIMATE MEAN  
DECLINATION, 1952

SCALE 1:24000  
1 000 0 1000 2000 3000 4000 5000 6000 7000 FEET  
1 0 5 10 KILOMETER  
CONTOUR INTERVAL 10 FEET  
DATUM IS MEAN SEA LEVEL

ROAD CLASSIFICATION  
Heavy-duty 4 LANE 16 LANE Light-duty  
Medium-duty 4 LANE 16 LANE Unimproved dirt  
U. S. Route State Route



OWENSBORO EAST, KY.-IND.  
SE/4 OWENSBORO 15' QUADRANGLE  
N3745-W8700/7.5

1952

UNIVERSITY OF WISCONSIN  
Department of Geography

THIS MAP COMPLIES WITH NATIONAL MAP ACCURACY STANDARDS  
FOR SALE BY U. S. GEOLOGICAL SURVEY, WASHINGTON 25, D. C.,  
INDIANA DEPARTMENT OF CONSERVATION, INDIANAPOLIS, INDIANA,  
AND KENTUCKY AGRICULTURAL AND INDUSTRIAL DEVELOPMENT BOARD, FRANKFORT, KENTUCKY  
A FOLDER DESCRIBING TOPOGRAPHIC MAPS AND SYMBOLS IS AVAILABLE ON REQUEST