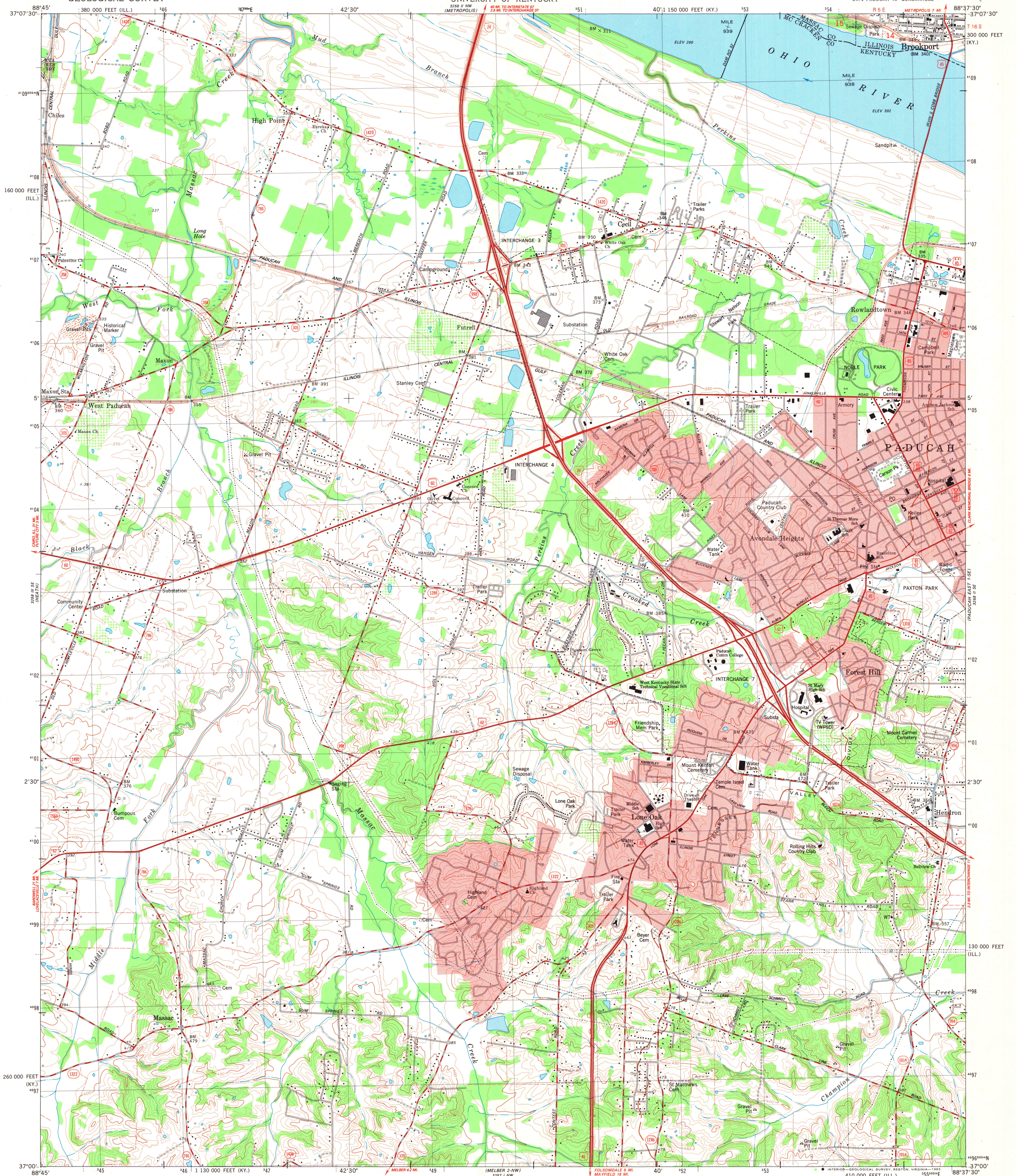


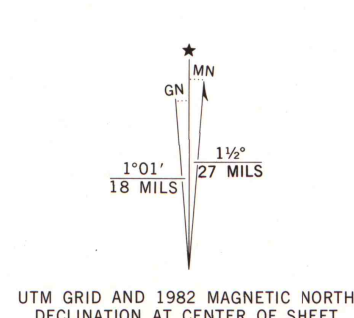
UNITED STATES
DEPARTMENT OF THE INTERIOR
GEOLOGICAL SURVEY

STATE OF KENTUCKY
KENTUCKY GEOLOGICAL SURVEY
UNIVERSITY OF KENTUCKY

PADUCAH WEST QUADRANGLE
KENTUCKY-ILLINOIS
7.5 MINUTE SERIES (TOPOGRAPHIC)
SW/4 PADUCAH 15' QUADRANGLE

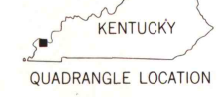


Mapped, edited, and published by the Geological Survey
Control by USGS, NOS/NOAA, Tennessee Valley Authority,
and Kentucky Department of Highways
Planimetry by photogrammetric methods from aerial photographs
taken 1952. Topography by planetable surveys 1954. Revised from aerial
photographs taken 1978. Field checked 1978. Map edited 1982
Polyconic projection. 10,000-foot grid ticks based
on Kentucky coordinate system, south zone and
Illinois coordinate system, east zone
1927 North American Datum
To place on the predicted North American Datum 1983
move the projection lines 4 meters south and
5 meters east as shown by dashed corner ticks.
The state boundary as shown represents the approximate position of
the low water line as determined from U. S. Corps of Engineers, Ohio
River Charts, surveyed 1912, and supplementary information.
Fine red dashed lines indicate selected fence and field lines where
generally visible on aerial photographs. This information is unchecked
Red tint indicates areas in which only landmark buildings are shown
There may be private inholdings within the boundaries of
the National or State reservations shown on this map



SCALE 1:24,000
CONTOUR INTERVAL 10 FEET
NATIONAL GEODETIC VERTICAL DATUM OF 1929

THIS MAP COMPLIES WITH NATIONAL MAP ACCURACY STANDARDS
FOR SALE BY U. S. GEOLOGICAL SURVEY, RESTON, VIRGINIA 22092,
KENTUCKY GEOLOGICAL SURVEY, LEXINGTON, KENTUCKY 40506,
KENTUCKY DEPARTMENT OF COMMERCE, FRANKFORT, KENTUCKY 40601,
AND ILLINOIS GEOLOGICAL SURVEY, CHAMPAIGN, ILLINOIS 61820
A FOLDER DESCRIBING TOPOGRAPHIC MAPS AND SYMBOLS IS AVAILABLE ON REQUEST



ROAD CLASSIFICATION
Primary highway, hard surface
Secondary highway, hard surface
Unimproved road
Light-duty road, hard or improved surface
Unimproved road
Interstate Route
U. S. Route
State Route

PADUCAH WEST, KY.-ILL.
SW/4 PADUCAH 15' QUADRANGLE
N3700-W8837.5/7.5

FEB 2 1984

University of Wisconsin
Madison

DMA 3258 II SW-SERIES V853
ARTHUR H. ROBINSON MAP LIBRARY
University of Wisconsin-Madison