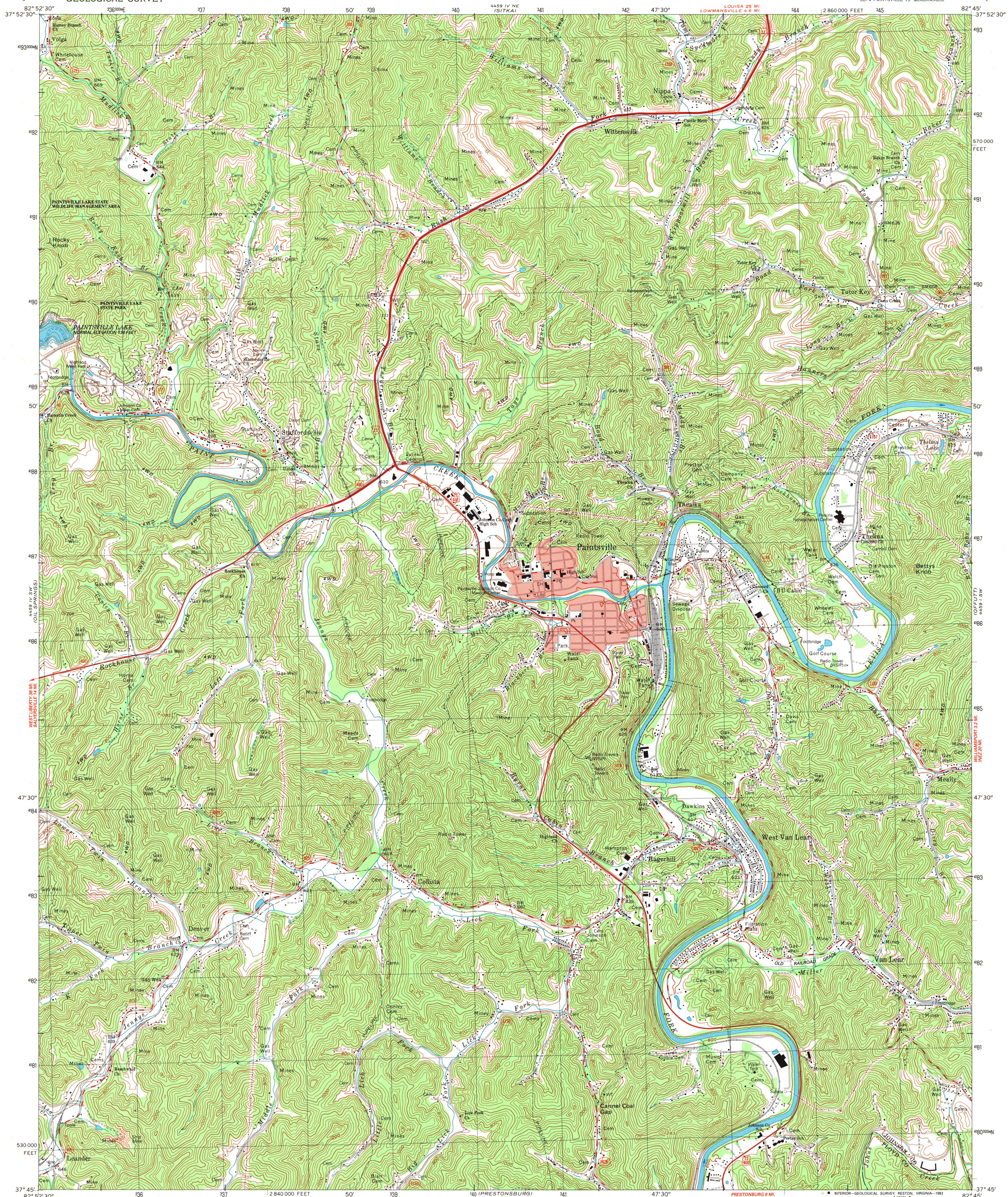
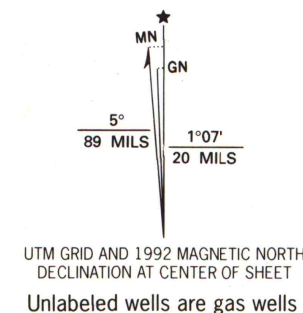


UNITED STATES
DEPARTMENT OF THE INTERIOR
GEOLOGICAL SURVEY

PAINTSVILLE QUADRANGLE
KENTUCKY
7.5 MINUTE SERIES (TOPOGRAPHIC)



Produced by the United States Geological Survey
in cooperation with Kentucky Geological Survey
Control by USGS and NOS/NOAA
Topography by photogrammetric methods from aerial photographs
taken 1950. Field checked 1954. Revised from aerial photographs
taken 1988. Field checked 1990. Map edited 1992
Projection and 10,000-foot grid ticks: Kentucky coordinate
system, south zone (Lambert conformal conic)
1000-meter Universal Transverse Mercator grid, zone 17
1927 North American Datum of 1983 (NAD 83) for 7.5-minute intersections
is given in USGS Bulletin 1875. The NAD 83 is shown by
dashed corner ticks
There may be private inholdings within the boundaries of
the National or State reservations shown on this map
Area covered by dashed light-blue pattern
is subject to controlled inundation
Red tint indicates areas in which only landmark buildings are shown



SCALE 1:24 000
1 000 2000 3000 4000 5000 6000 7000 FEET
1 2 3 4 5 6 7 8 9 10 KILOMETER
CONTOUR INTERVAL 40 FEET
NATIONAL GEODETIC VERTICAL DATUM OF 1929

COMPLIES WITH U.S. GEOLOGICAL SURVEY STANDARDS FOR SPATIAL ACCURACY - CLASS 2
FOR SALE BY U.S. GEOLOGICAL SURVEY, DENVER, COLORADO 80225, OR RESTON, VIRGINIA 22092
KENTUCKY GEOLOGICAL SURVEY, LEXINGTON, KENTUCKY 40506
AND KENTUCKY DEPARTMENT OF COMMERCE, FRANKFORT, KENTUCKY 40601
A FOLDER DESCRIBING TOPOGRAPHIC MAPS AND SYMBOLS IS AVAILABLE ON REQUEST



U.S. Depository Copy
DO NOT DISCARD

ROAD CLASSIFICATION
Primary highway, hard surface
Secondary highway, hard surface
Unimproved road
Interstate Route
U. S. Route
State Route

A.H. ROBINSON
MAP LIBRARY
DEC 21 1992
University of Wisconsin
Madison

PAINTSVILLE, KY.
SE/4 PAINTSVILLE 15' QUADRANGLE
37082-G7-TF-024

1992
DMA 4459 IV SE - SERIES V853