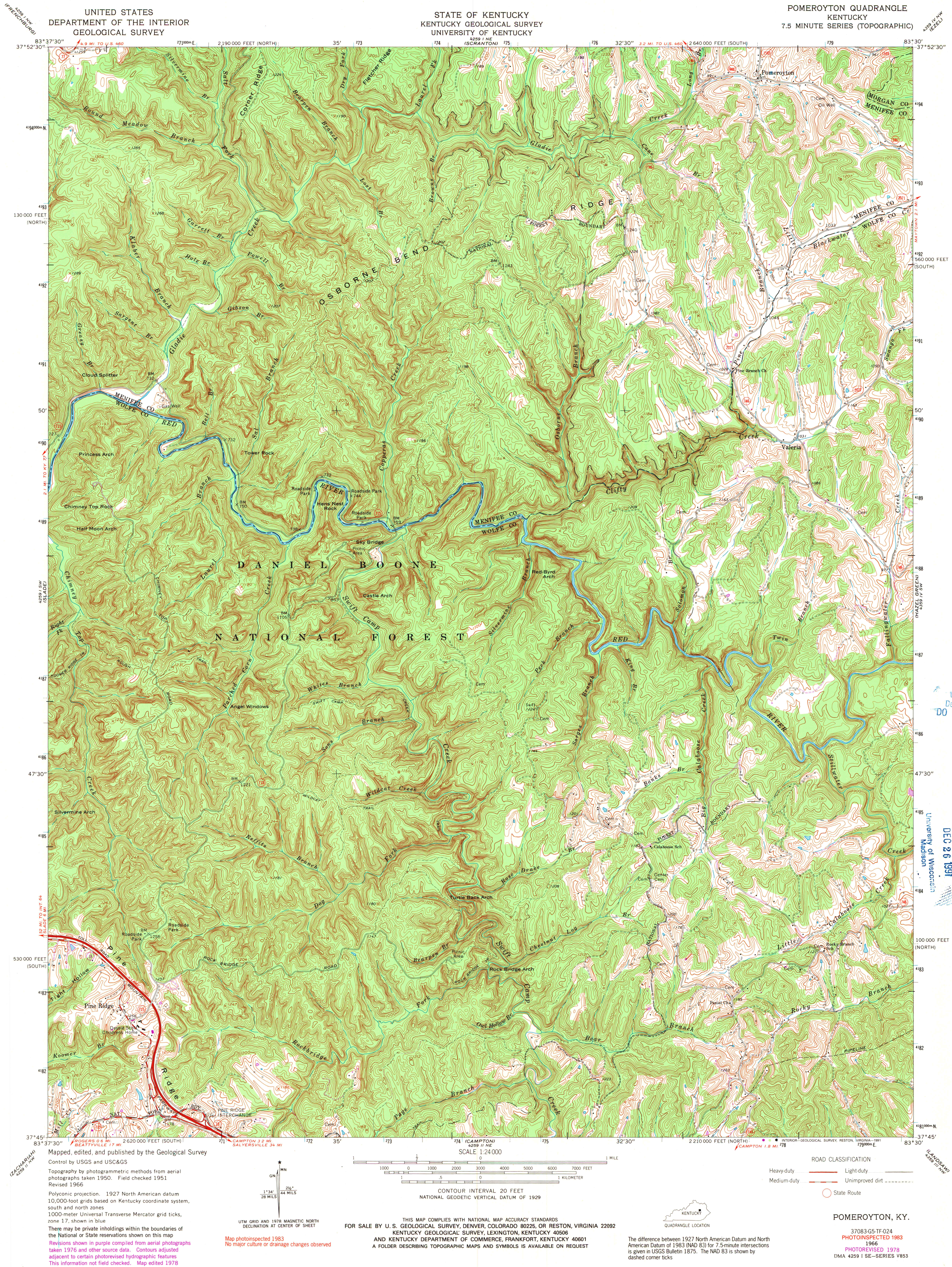


UNITED STATES
DEPARTMENT OF THE INTERIOR
GEOLOGICAL SURVEY

STATE OF KENTUCKY
KENTUCKY GEOLOGICAL SURVEY
UNIVERSITY OF KENTUCKY

POMEROYTON QUADRANGLE
KENTUCKY
7.5 MINUTE SERIES (TOPOGRAPHIC)



U.S. Regional
Depository Copy
DO NOT DISCARD

A.H. ROBINSON
MAP LIBRARY
DEC 26 1991
University of Wisconsin
Madison

Mapped, edited, and published by the Geological Survey
Control by USGS and USC&GS
Topography by photogrammetric methods from aerial
photographs taken 1950. Field checked 1951
Revised 1966
Polyconic projection. 1927 North American datum
10,000-foot grids based on Kentucky coordinate system,
south and north zones
1000-meter Universal Transverse Mercator grid ticks,
zone 17, shown in blue
There may be private inholdings within the boundaries of
the National or State reservations shown on this map
Revisions shown in purple compiled from aerial photographs
taken 1976 and other source data. Contours adjusted
adjacent to certain photorevised hydrographic features
This information not field checked. Map edited 1978

Map photorevised 1983
No major culture or drainage changes observed

SCALE 1:24,000
CONTOUR INTERVAL 20 FEET
NATIONAL GEODETIC VERTICAL DATUM OF 1929
FOR SALE BY U.S. GEOLOGICAL SURVEY, DENVER, COLORADO 80225, OR RESTON, VIRGINIA 22092
KENTUCKY GEOLOGICAL SURVEY, LEXINGTON, KENTUCKY 40506
AND KENTUCKY DEPARTMENT OF COMMERCE, FRANKFORT, KENTUCKY 40601
A FOLDER DESCRIBING TOPOGRAPHIC MAPS AND SYMBOLS IS AVAILABLE ON REQUEST

The difference between 1927 North American datum and North
American Datum of 1983 (NAD 83) for 7.5-minute intersections
is given in USGS Bulletin 1875. The NAD 83 is shown by
dashed corner ticks

ROAD CLASSIFICATION
Heavy-duty ——— Light-duty ———
Medium-duty ——— Unimproved dirt - - - - -
State Route ———
POMEROYTON, KY.
37083 G5-TF-024
PHOTOINSPECTED 1983
1966
PHOTOREVISED 1978
DMA 4259 I SE—SERIES V853