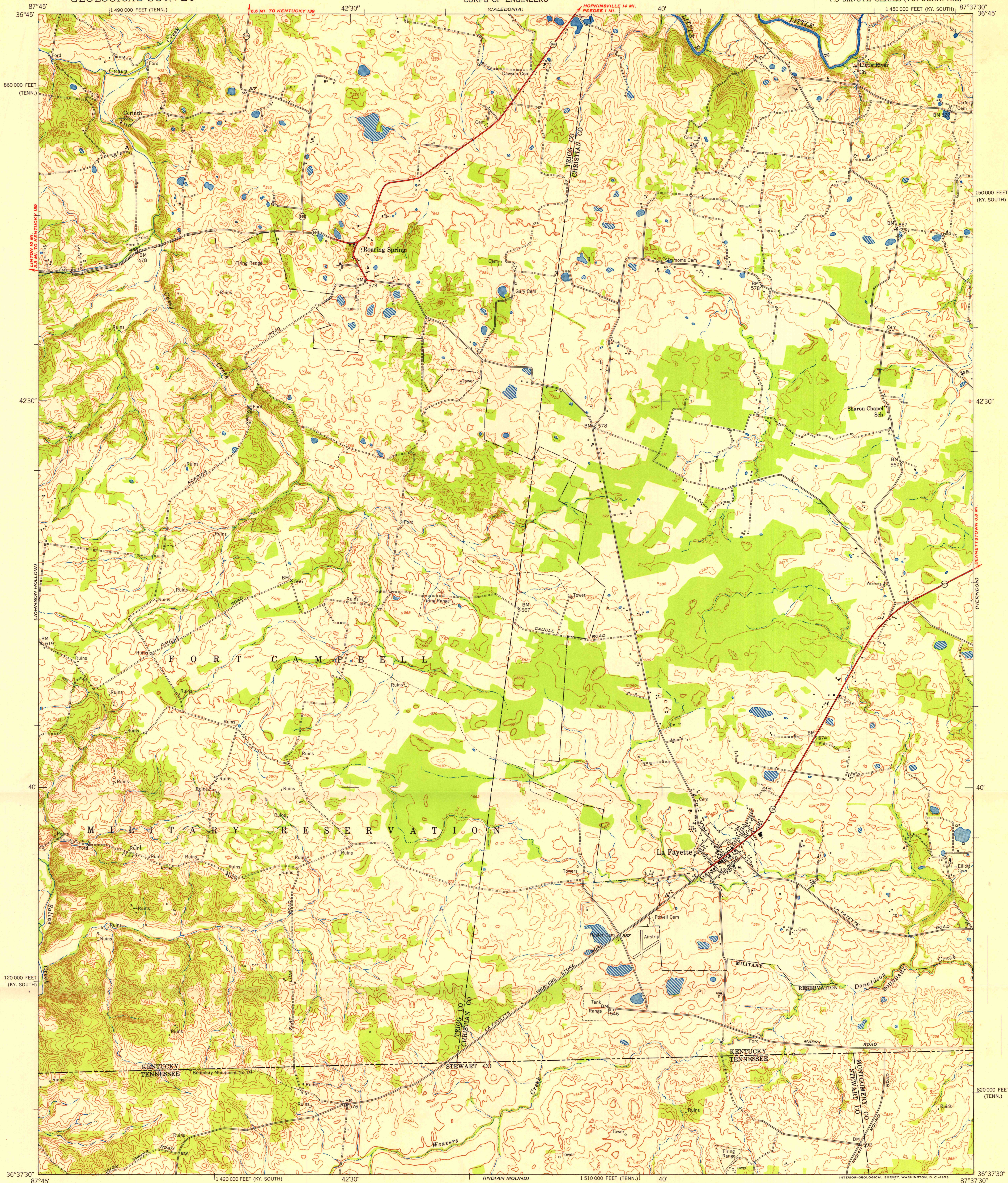


UNITED STATES
DEPARTMENT OF THE INTERIOR
GEOLOGICAL SURVEY

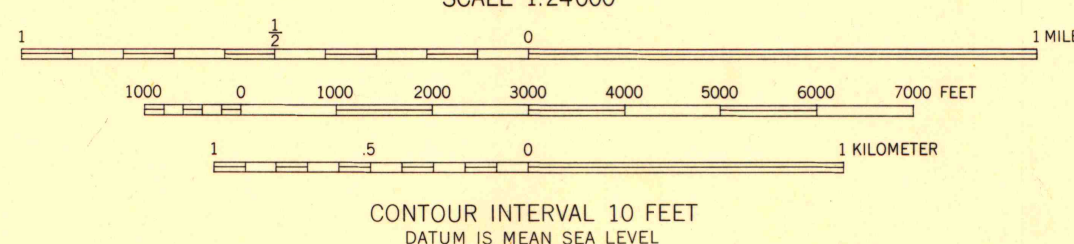
UNITED STATES
DEPARTMENT OF THE ARMY
CORPS OF ENGINEERS

ROARING SPRING QUADRANGLE
KENTUCKY-TENNESSEE
7.5 MINUTE SERIES (TOPOGRAPHIC)

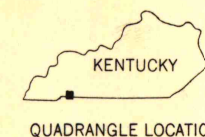


Mapped by the Army Map Service
Published for civil use by the Geological Survey
Control by USGS, USC&GS, USCE, and TVA
Topography from aerial photographs by stereoplanigraph
Aerial photographs taken 1951. Field check 1951
Polyconic projection. 1927 North American datum
10,000-foot grids based on Kentucky coordinate system,
south zone, and Tennessee coordinate system
Unchecked elevations are shown in brown

TRUE NORTH
MAGNETIC NORTH
APPROXIMATE MEAN
DECLINATION, 1951



ROAD CLASSIFICATION
Heavy-duty ——— Light-duty ———
Medium-duty ——— Unimproved dirt ———
U. S. Route ——— State Route ———



ROARING SPRING, KY.-TENN.
NW 1/4 HERNDON 15' QUADRANGLE
N3637.5-W8737.5/7.5

1951

THIS MAP COMPLIES WITH NATIONAL MAP ACCURACY STANDARDS
FOR SALE BY U. S. GEOLOGICAL SURVEY, WASHINGTON 25, D. C.
KENTUCKY AGRICULTURAL AND INDUSTRIAL DEVELOPMENT BOARD, FRANKFORT, KENTUCKY,
AND TENNESSEE DIVISION OF GEOLOGY, NASHVILLE, TENN.
A FOLDER DESCRIBING TOPOGRAPHIC MAPS AND SYMBOLS IS AVAILABLE ON REQUEST