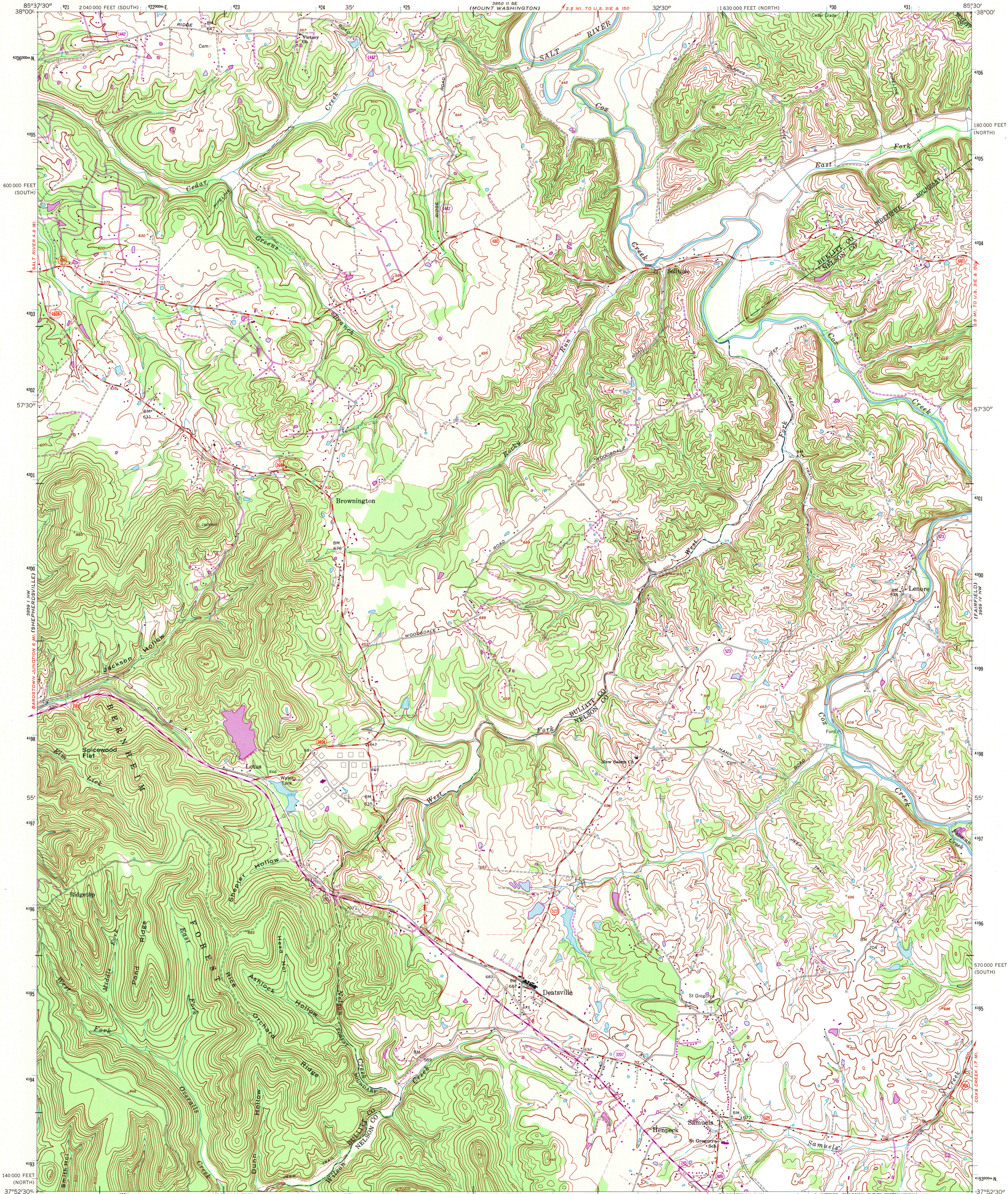
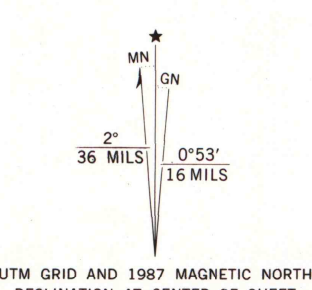


UNITED STATES  
DEPARTMENT OF THE INTERIOR  
GEOLOGICAL SURVEY

SAMUELS QUADRANGLE  
KENTUCKY  
7.5 MINUTE SERIES (TOPOGRAPHIC)  
NE/4 SHEPHERDSVILLE 15' QUADRANGLE



Mapped by the Army Map Service  
Published for civil use by the Geological Survey  
Revised in cooperation with State of Kentucky Geological Survey  
Control by USGS, USC&GS, and USCE  
Topography by photogrammetric methods from aerial  
photographs taken 1947. Field checked 1949. Revised 1962  
Polyconic projection. 1927 North American datum  
10,000-foot grids based on Kentucky coordinate system,  
north and south zones  
1000-meter Universal Transverse Mercator grid ticks,  
zone 16, shown in blue  
Fine red dashed lines indicate selected fence and field lines where  
generally visible on aerial photographs. This information is unchecked  
To place on the predicted North American Datum 1983  
move the projection lines 4 meters south and  
3 meters west as shown by dashed corner ticks



SCALE 1:24 000  
CONTOUR INTERVAL 20 FEET  
NATIONAL GEODETIC VERTICAL DATUM OF 1929

THIS MAP COMPLIES WITH NATIONAL MAP ACCURACY STANDARDS  
FOR SALE BY U. S. GEOLOGICAL SURVEY, DENVER, COLORADO 80225 OR RESTON, VIRGINIA 22092,  
KENTUCKY GEOLOGICAL SURVEY, LEXINGTON, KENTUCKY 40506,  
AND KENTUCKY DEPARTMENT OF COMMERCE, FRANKFORT, KENTUCKY 40601  
A FOLDER DESCRIBING TOPOGRAPHIC MAPS AND SYMBOLS IS AVAILABLE ON REQUEST

JUL 1 1983

University of Wisconsin  
Madison



ROAD CLASSIFICATION  
Medium-duty ——— Light-duty ———  
Unimproved dirt ———

State Route

ARTHUR H. ROBINSON MAP LIBRARY  
University of Wisconsin-Madison

SAMUELS, KY.  
NE/4 SHEPHERDSVILLE 15' QUADRANGLE  
37085-H5-TF-024

1962  
PHOTOREVISED 1987  
DMA 3859 I NE-SERIES V853

U.S. Regional  
Depository Copy  
DO NOT DISCARD