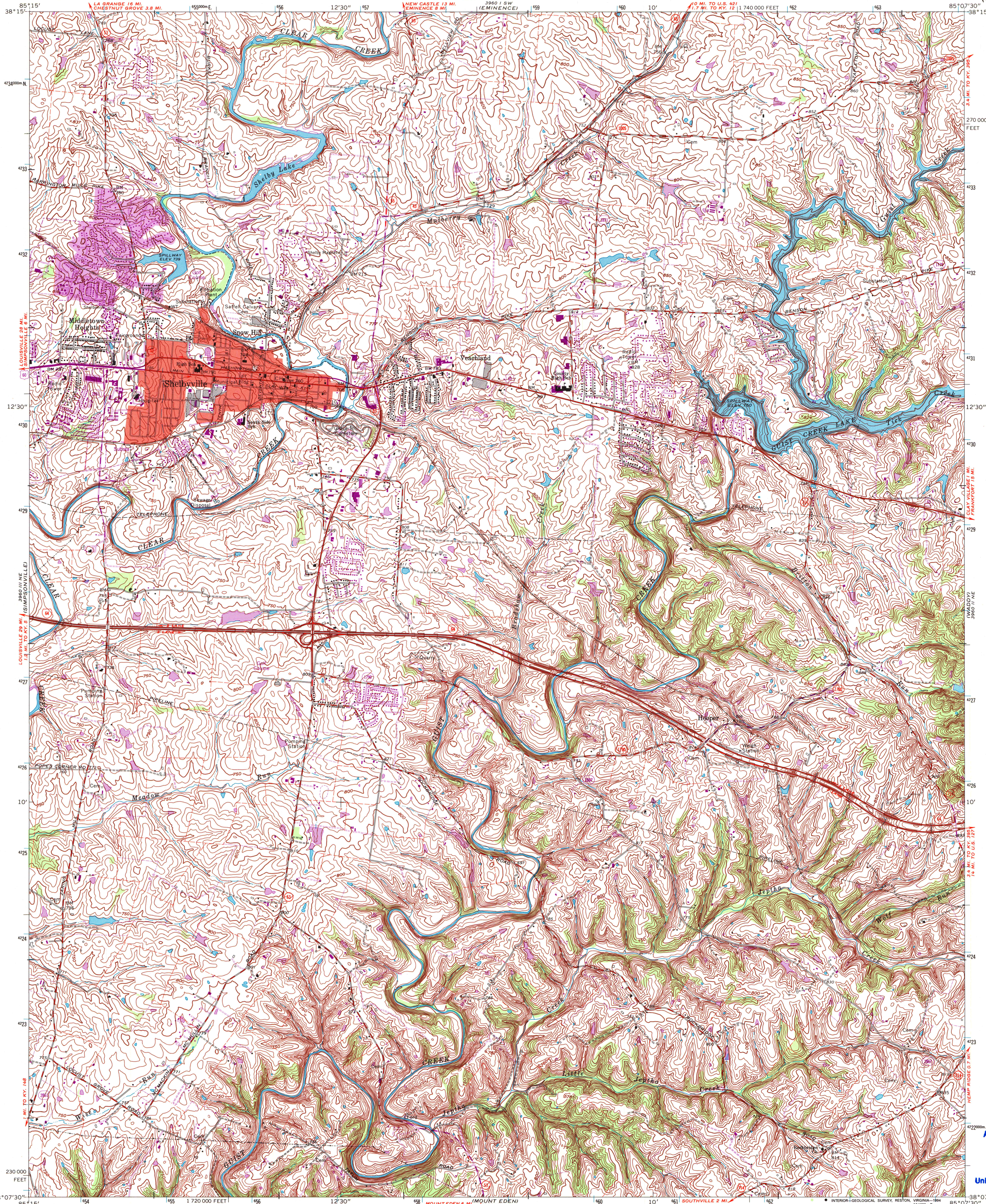


UNITED STATES
DEPARTMENT OF THE INTERIOR
GEOLOGICAL SURVEY

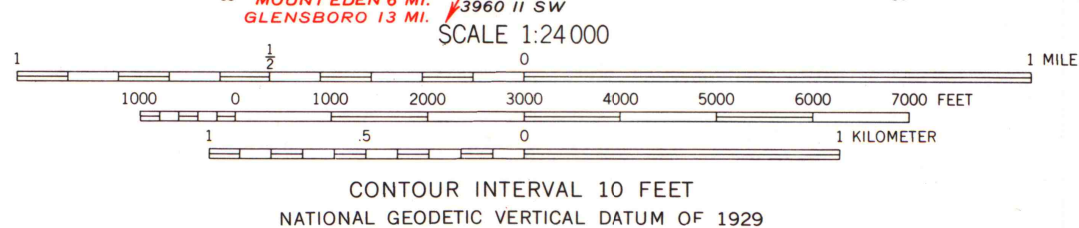
STATE OF KENTUCKY
KENTUCKY GEOLOGICAL SURVEY
UNIVERSITY OF KENTUCKY

SHELBYVILLE QUADRANGLE
KENTUCKY-SHELBY CO.
7.5 MINUTE SERIES (TOPOGRAPHIC)

NW 1/4 MT EDEN 15' QUADRANGLE



Produced by the United States Geological Survey
Control by USGS and NOS/NOAA
Topography by photogrammetric methods from aerial photographs taken 1952. Field checked 1954. Revised 1965
Projection and 10,000-foot grid ticks: Kentucky coordinate system, north zone (Lambert conformal conic)
1000-meter Universal Transverse Mercator grid ticks, zone 16, shown in blue 1927 North American Datum (NAD 27)
North American Datum of 1983 (NAD 83) is shown by dashed corner ticks. The values of the shift between NAD 27 and NAD 83 for 7.5-minute intersections are given in USGS Bulletin 1875
Red tint indicates areas in which only landmark buildings are shown
Fine red dashed lines indicate selected fence and field lines where generally visible on aerial photographs. This information is unchecked



ROAD CLASSIFICATION
Heavy-duty ——— Light-duty ———
Medium-duty ——— Unimproved dirt ———
Interstate Route U.S. Route State Route

U.S. Regional
Depository Copy
DO NOT DISCARD

SHELBYVILLE, KY.
NW 1/4 MT EDEN 15' QUADRANGLE
38085-B2-TF-024

1965
REVISED 1993
DMA 3960 II NW - SERIES V853

COMPLIES WITH U.S. GEOLOGICAL SURVEY STANDARDS FOR SPATIAL ACCURACY - CLASS 2
FOR SALE BY U.S. GEOLOGICAL SURVEY, DENVER, COLORADO 80225, OR RESTON, VIRGINIA 22092
KENTUCKY GEOLOGICAL SURVEY, LEXINGTON, KENTUCKY 40506
AND KENTUCKY DEPARTMENT OF COMMERCE, FRANKFORT, KENTUCKY 40601
A FOLDER DESCRIBING TOPOGRAPHIC MAPS AND SYMBOLS IS AVAILABLE ON REQUEST

Revisions shown in purple compiled in cooperation with Kentucky Geological Survey from aerial photographs taken 1992 and other sources. This information not field checked. Map edited 1993
Information shown in purple may not meet USGS content standards and may conflict with previously mapped contours
Purple tint indicates extension of urban areas

A.H. ROBINSON
MAP LIBRARY
AUG 04 1954
University of Wisconsin
Madison