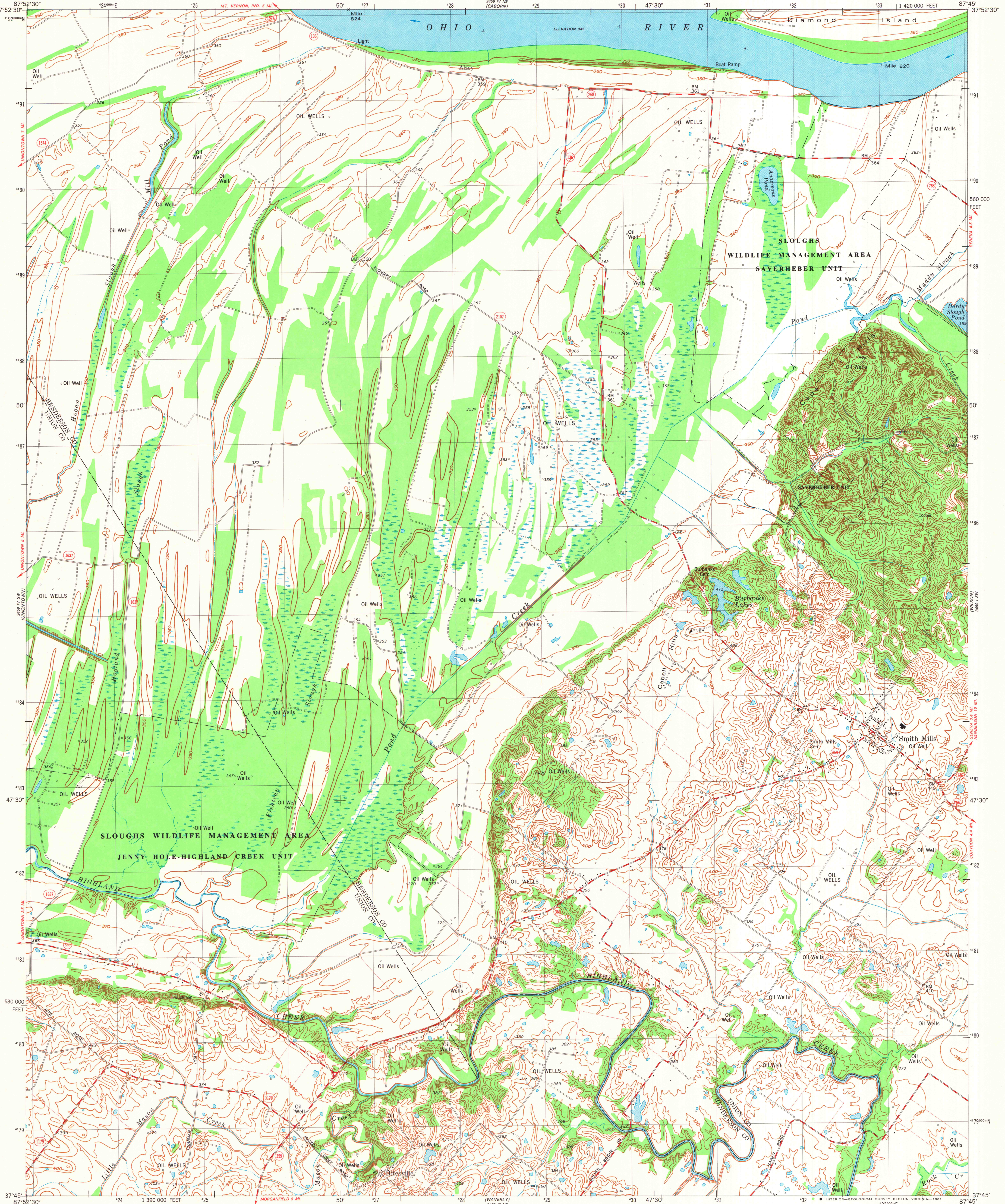
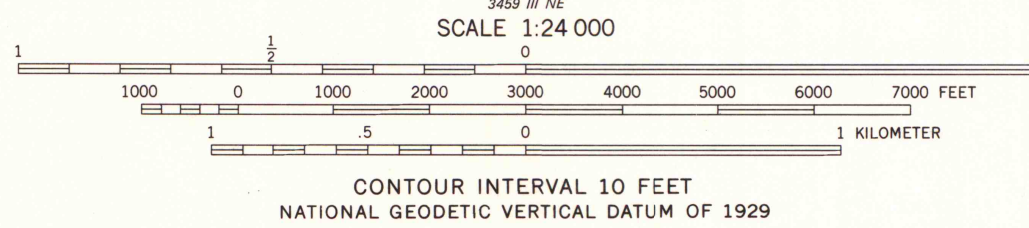


UNITED STATES  
DEPARTMENT OF THE INTERIOR  
GEOLOGICAL SURVEY

SMITH MILLS QUADRANGLE  
KENTUCKY  
7.5 MINUTE SERIES (TOPOGRAPHIC)  
SE/4 UNIONTOWN 15' QUADRANGLE



Mapped, edited, and published by the Geological Survey in cooperation with Kentucky Geological Survey Control by USGS, NOS/NOAA, and USCE  
Culture and drainage in part compiled from aerial photographs taken 1950. Topography by planetable surveys 1952. Revised from aerial photographs taken 1974. Field checked 1976  
Map edited 1981  
Polyconic projection. 10,000-foot grid ticks based on Kentucky coordinate system, south zone 1000-meter Universal Transverse Mercator grid, zone 16 1927 North American Datum  
To place on the predicted North American Datum 1983 move the projection lines 3 meters south and 3 meters east as shown by dashed corner ticks  
All wells shown are oil wells  
Fine red dashed lines indicate selected fence and field lines where generally visible on aerial photographs. This information is unchecked  
There may be private inholdings within the boundaries of the National or State reservations shown on this map



ROAD CLASSIFICATION  
Primary highway, hard surface  
Secondary highway, hard surface  
Light-duty road, hard or improved surface  
Unimproved road  
Interstate Route  
U. S. Route  
State Route

THIS MAP COMPLIES WITH NATIONAL MAP ACCURACY STANDARDS FOR SALE BY U. S. GEOLOGICAL SURVEY, RESTON, VIRGINIA 22092, KENTUCKY GEOLOGICAL SURVEY, LEXINGTON, KENTUCKY 40506, AND KENTUCKY DEPARTMENT OF COMMERCE, FRANKFORT, KENTUCKY 40601  
A FOLDER DESCRIBING TOPOGRAPHIC MAPS AND SYMBOLS IS AVAILABLE ON REQUEST



SMITH MILLS, KY.  
SE/4 UNIONTOWN 15' QUADRANGLE  
N3745-W8745/7.5

1981  
DMA 3459 IV SE-SERIES V853

MAP AND AIR PHOTO  
LIBRARY  
MAR 1 - 1982  
University of Wisconsin  
Madison