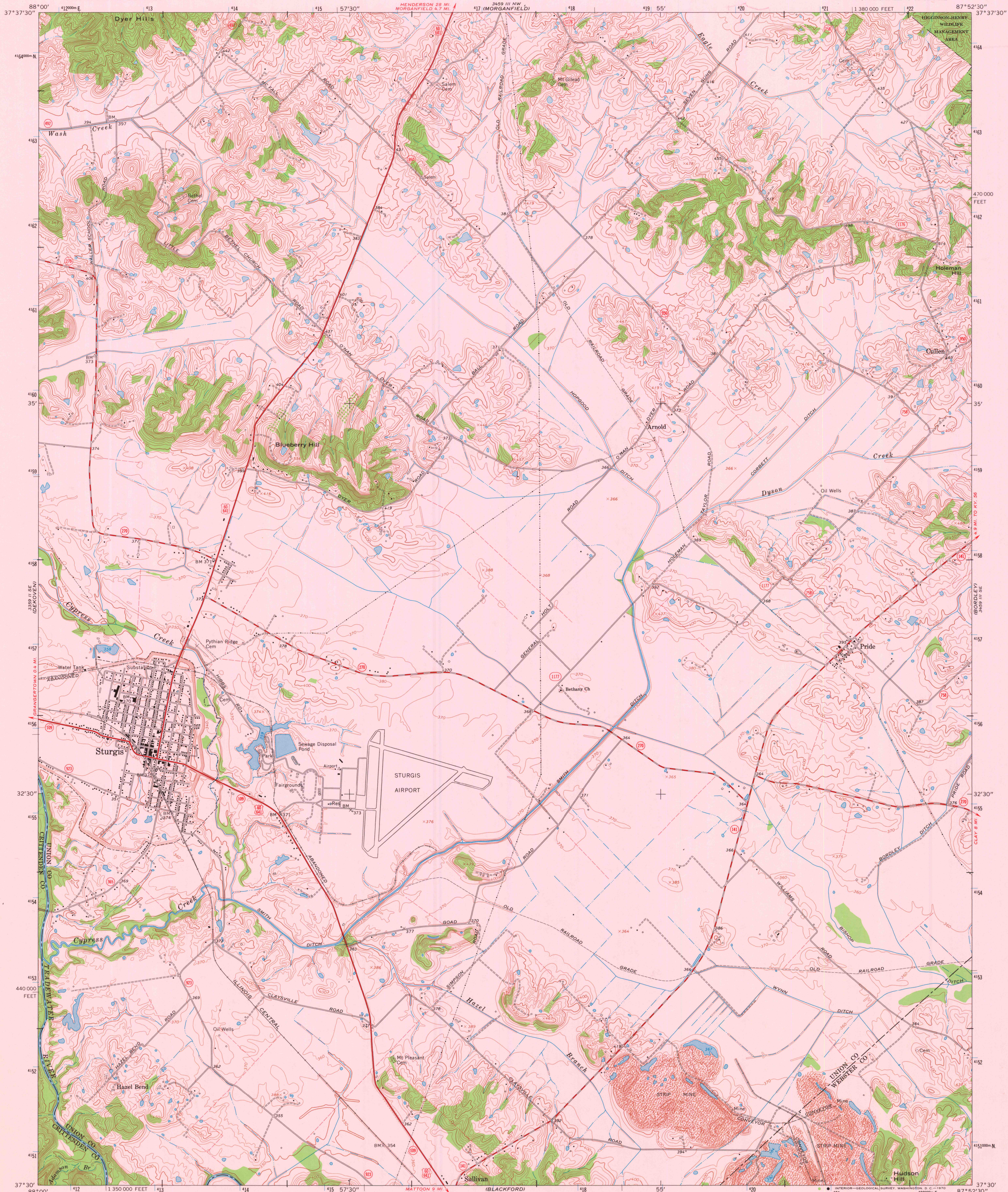
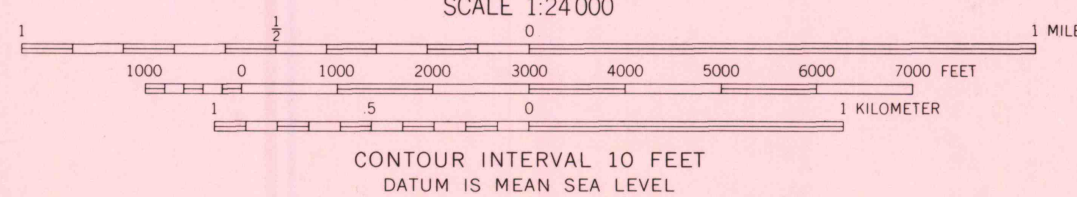
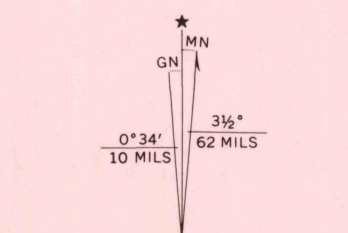


UNITED STATES
DEPARTMENT OF THE INTERIOR
GEOLOGICAL SURVEY

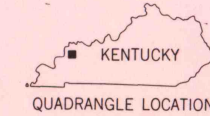
STURGIS QUADRANGLE
KENTUCKY
7.5 MINUTE SERIES (TOPOGRAPHIC)
SW/4 MORGANFIELD 15' QUADRANGLE



Mapped by the Army Map Service
Edited and published by the Geological Survey
Revised by the Geological Survey in cooperation with
the Kentucky Geological Survey
Control by USGS, USC&GS, and USCE
Topography by photogrammetric methods from aerial photographs
taken 1946. Field checked 1949. Revised from aerial
photographs taken 1968. Field checked 1969.
Polyconic projection. 1927 North American datum
10,000-foot grid based on Kentucky coordinate system,
south zone
1000-meter Universal Transverse Mercator grid ticks, zone 16,
shown in blue
Fine red dashed lines indicate selected fence and field lines where
generally visible on aerial photographs. This information is unchecked



THIS MAP COMPLIES WITH NATIONAL MAP ACCURACY STANDARDS
FOR SALE BY U.S. GEOLOGICAL SURVEY, WASHINGTON, D. C. 20242,
KENTUCKY GEOLOGICAL SURVEY, LEXINGTON, KENTUCKY 40506,
AND KENTUCKY DEPARTMENT OF COMMERCE, FRANKFORT, KENTUCKY 40601
A FOLDER DESCRIBING TOPOGRAPHIC MAPS AND SYMBOLS IS AVAILABLE ON REQUEST



ROAD CLASSIFICATION
Primary highway, all weather, hard surface
Secondary highway, all weather, hard surface
Light-duty road, all weather, improved surface
Unimproved road, fair or dry weather
U. S. Route
State Route

STURGIS, KY.
SW/4 MORGANFIELD 15' QUADRANGLE
N3730-W8752.5/7.5
1969
AMS 3459 III SW-SERIES V853

U.S. GEOLOGICAL SURVEY
NATIONAL MAPPING DIVISION

AUG 3 1981
2200