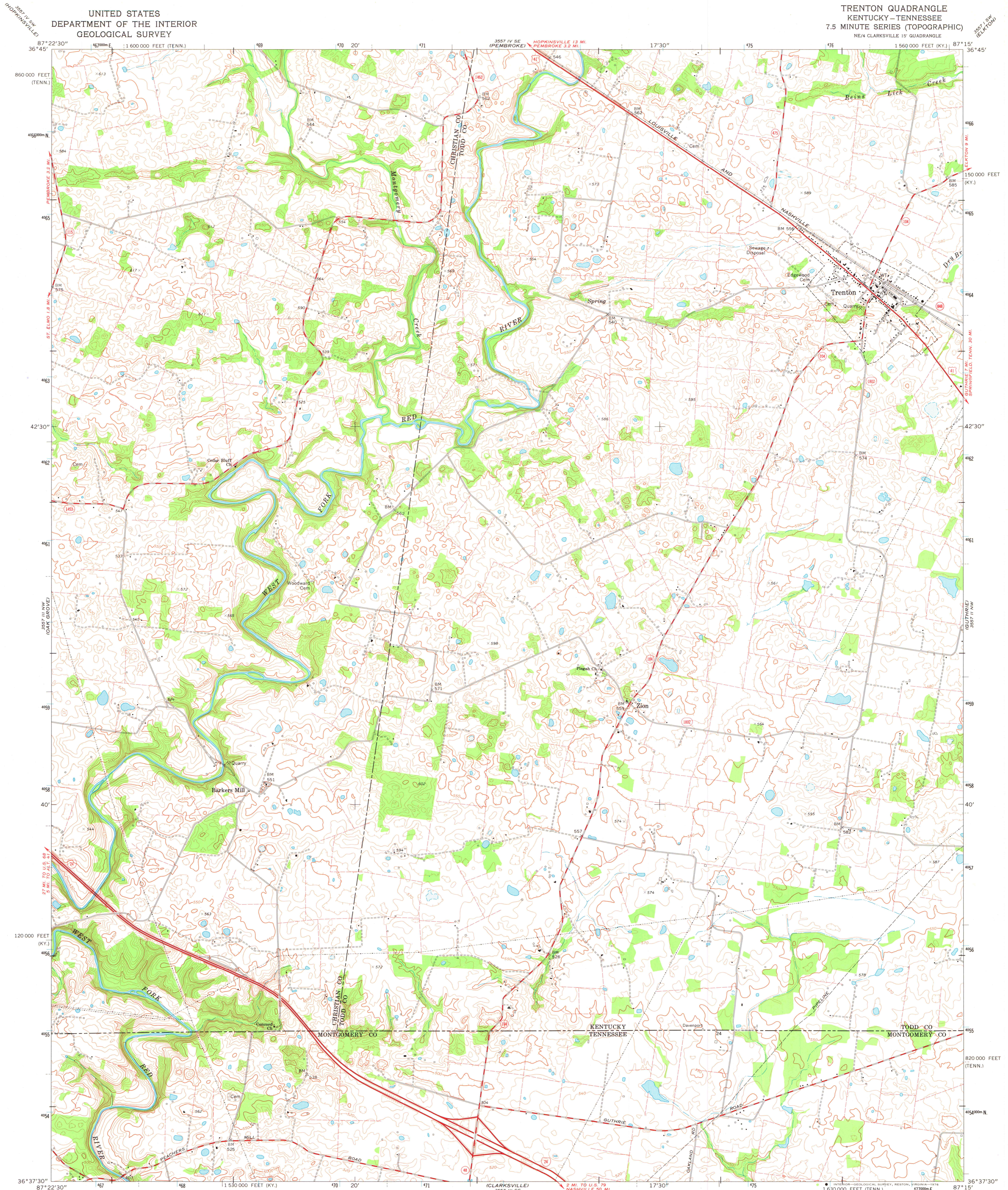
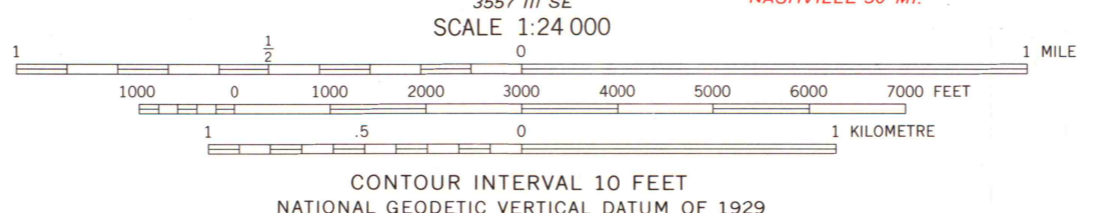


UNITED STATES
DEPARTMENT OF THE INTERIOR
GEOLOGICAL SURVEY

TRENTON QUADRANGLE
KENTUCKY-TENNESSEE
7.5 MINUTE SERIES (TOPOGRAPHIC)
NE/4 CLARKSVILLE 15' QUADRANGLE



Mapped by the Army Map Service
Edited and published by the Geological Survey
Revised by the Geological Survey in cooperation
with State of Kentucky agencies
Control by USGS, NOS/NOAA, and USCE
Topography by photogrammetric methods from aerial photographs
taken 1951. Field checked 1957. Revised from aerial
photographs taken 1974. Field checked 1974
Polyconic projection. 1927 North American datum
10,000-foot grids based on Kentucky coordinate system,
south zone, and Tennessee coordinate system
1000-metre Universal Transverse Mercator grid ticks,
zone 16, shown in blue
Fine dashed lines indicate selected fence and field lines where
generally visible on aerial photographs. This information is unchecked



THIS MAP COMPLIES WITH NATIONAL MAP ACCURACY STANDARDS
FOR SALE BY U.S. GEOLOGICAL SURVEY, RESTON, VIRGINIA 22092,
KENTUCKY GEOLOGICAL SURVEY, LEXINGTON, KENTUCKY 40506,
KENTUCKY DEPARTMENT OF COMMERCE, FRANKFORT, KENTUCKY 40601
AND TENNESSEE DIVISION OF GEOLOGY, NASHVILLE, TENN. 37219
A FOLDER DESCRIBING TOPOGRAPHIC MAPS AND SYMBOLS IS AVAILABLE ON REQUEST



MAP AND AIR PHOTO
LIBRARY

JUN 3 1977

University of Wisconsin
Madison

TRENTON, KY.-TENN.
(FORMERLY HAMMACKSVILLE)

NE/4 CLARKSVILLE 15' QUADRANGLE
N3637.5-W8715.7.5

1974

AMS 3557 III NE-SERIES V853