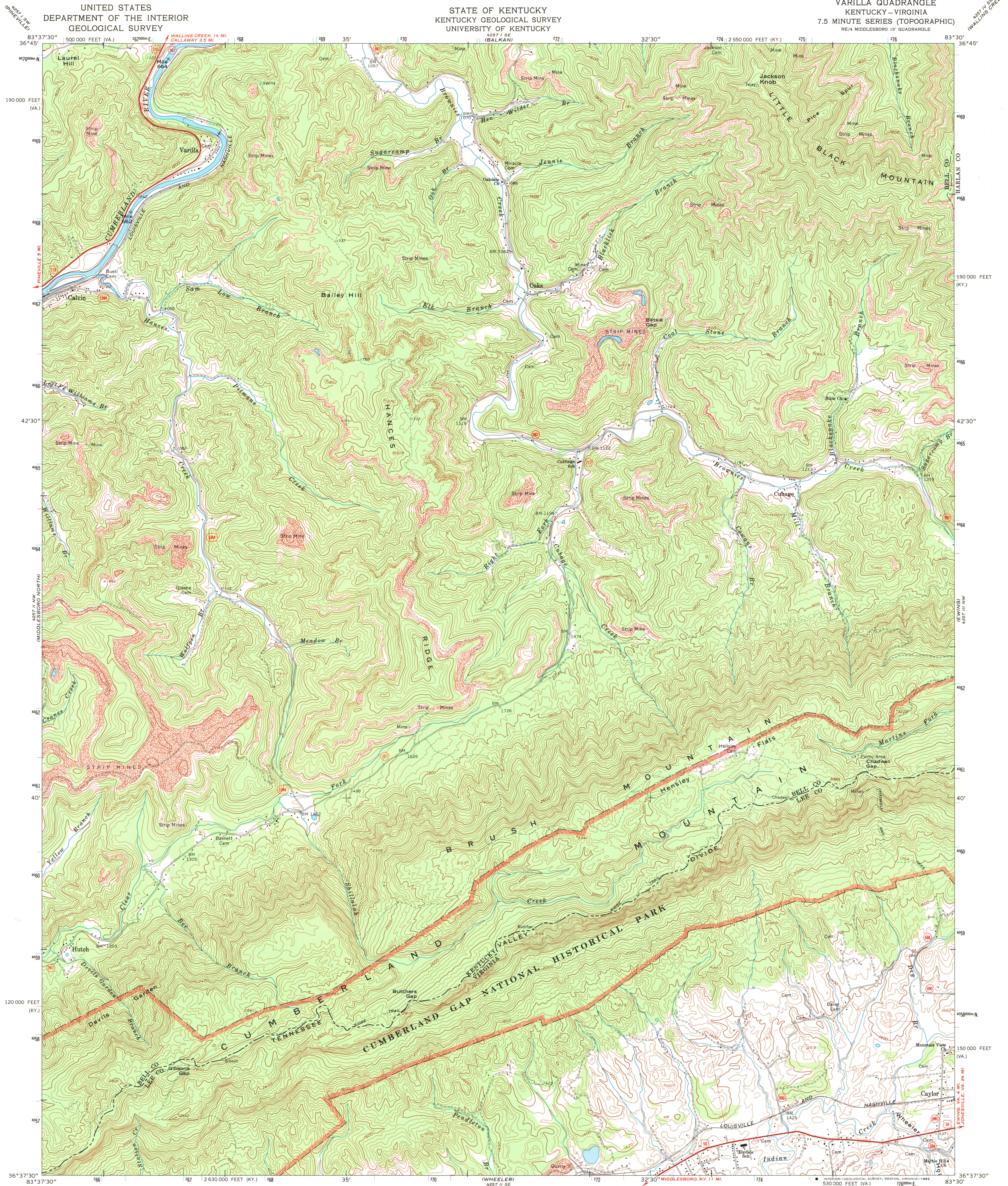


UNITED STATES
DEPARTMENT OF THE INTERIOR
GEOLOGICAL SURVEY

STATE OF KENTUCKY
KENTUCKY GEOLOGICAL SURVEY
UNIVERSITY OF KENTUCKY

VARILLA QUADRANGLE
KENTUCKY-VIRGINIA
7.5 MINUTE SERIES (TOPOGRAPHIC)
NE 1/4 MIDDLESBORO 15' QUADRANGLE



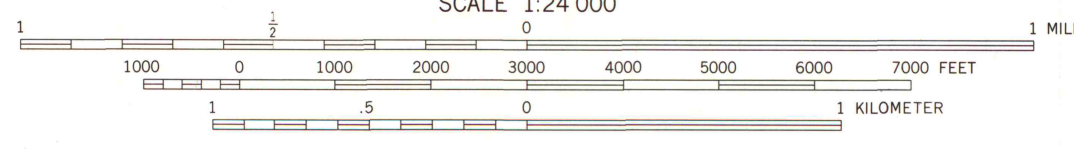
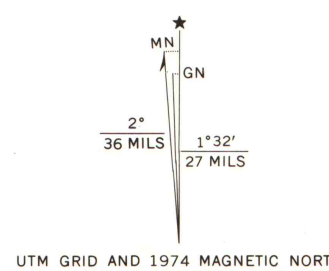
Mapped, edited, and published by the Geological Survey
Control by USGS and NOS/NOAA

Topography by photogrammetric methods from aerial photographs
taken 1952. Field checked 1954. Revised from aerial
photographs taken 1973. Field checked 1974

Polyconic projection. 1927 North American datum
10,000-foot grids based on Kentucky coordinate system,
south zone, and Virginia coordinate system, south zone
1000-meter Universal Transverse Mercator grid ticks,
zone 17, shown in blue

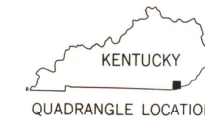
Fine red dashed lines indicate selected fence and field lines where
generally visible on aerial photographs. This information is unchecked

Map photoinspected 1976
No major culture or drainage changes observed



CONTOUR INTERVAL 40 FEET
DOTTED LINES REPRESENT 20-FOOT CONTOURS
NATIONAL GEODETIC VERTICAL DATUM OF 1929

THIS MAP COMPLIES WITH NATIONAL MAP ACCURACY STANDARDS
FOR SALE BY U. S. GEOLOGICAL SURVEY, RESTON, VIRGINIA 22092
KENTUCKY GEOLOGICAL SURVEY, LEXINGTON, KENTUCKY 40506,
AND KENTUCKY DEPARTMENT OF COMMERCE, FRANKFORT, KENTUCKY 40601
AND VIRGINIA DIVISION OF MINERAL RESOURCES, CHARLOTTESVILLE, VIRGINIA 22903
A FOLDER DESCRIBING TOPOGRAPHIC MAPS AND SYMBOLS IS AVAILABLE ON REQUEST



ROAD CLASSIFICATION
Primary highway, hard surface ————
Secondary highway, hard surface ————
Unimproved road ————
Interstate Route ————
U. S. Route ————
State Route ————

VARILLA, KY. - VA.
NE 1/4 MIDDLESBORO 15' QUADRANGLE
N3637.5-W8330.7.5
PHOTOINSPECTED 1976
1974

AMS 4257 II NE-SERIES V853

JUN -4 1984
ARTHUR H. ROBINSON MAP LIBRARY
University of Wisconsin-Madison