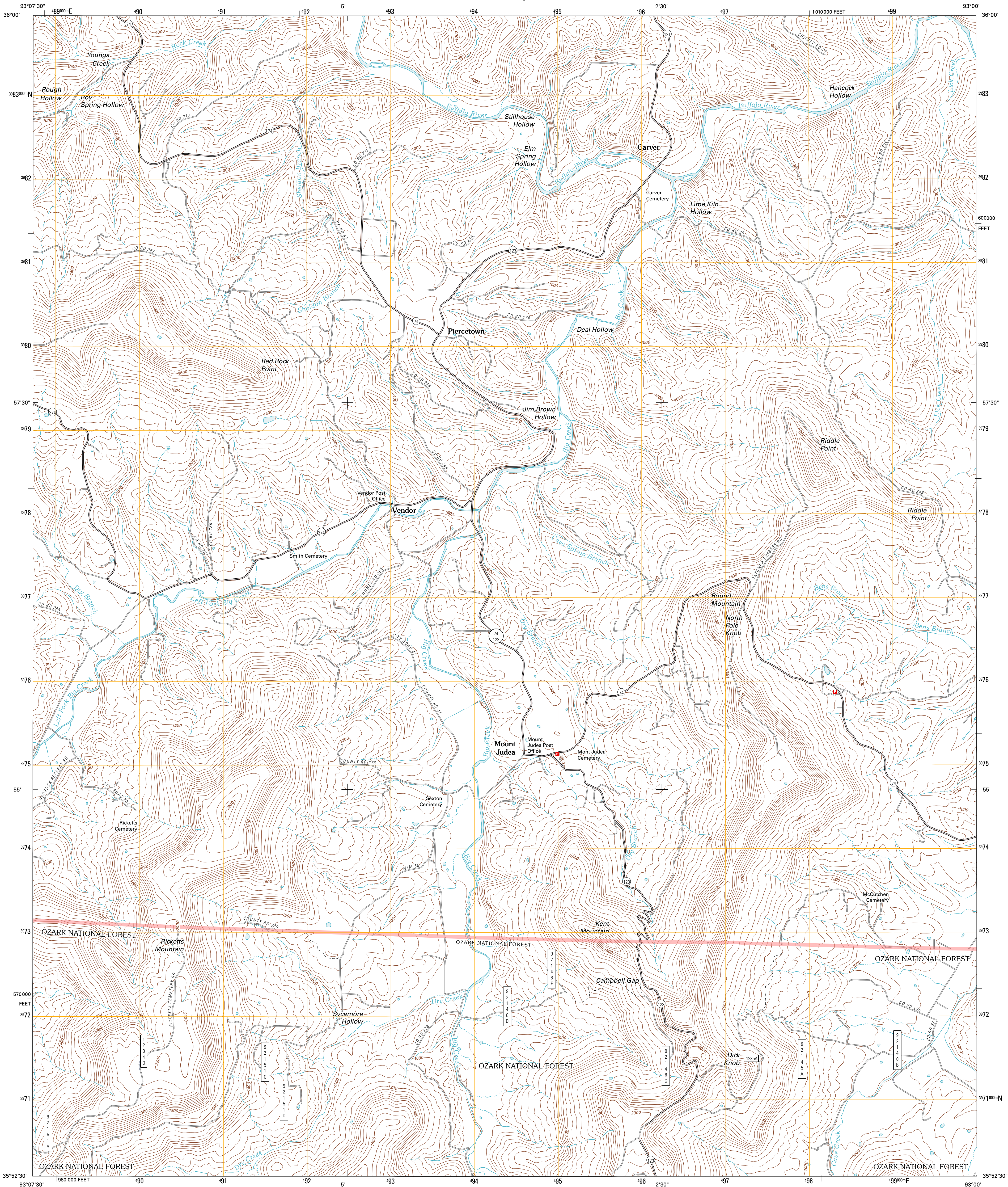




U.S. DEPARTMENT OF THE INTERIOR  
U. S. GEOLOGICAL SURVEY



MOUNT JUDEA QUADRANGLE  
ARKANSAS-NEWTON CO.  
7.5-MINUTE SERIES

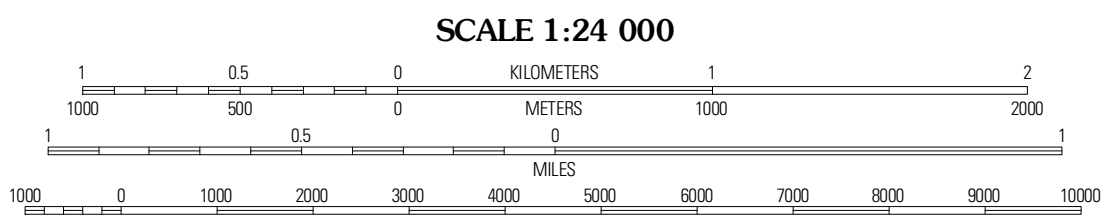


Produced by the United States Geological Survey  
North American Datum of 1983 (NAD83)  
World Geodetic System of 1984 (WGS84). Projection and  
10 000-meter grid: Universal Transverse Mercator, Zone 15S  
10 000-foot ticks: Arkansas Coordinate System of 1983  
(north zone)

Imagery.....NAIP, August 2009 - September 2009  
Roads.....©2006-2010 Tele Atlas  
Roads within US Forest Service Lands.....FSTopo Data  
with limited Forest Service updates, 2009  
Names.....©2006-2010 Tele Atlas  
Hydrography.....National Hydrography Dataset, 2009  
Contours.....National Elevation Dataset, 2000  
Boundaries.....Census, IBWC, IBC, USGS, 1972 - 2010

UTM GRID AND 2011 MAGNETIC NORTH  
DECLINATION AT CENTER OF SHEET

U.S. National Grid  
100,000m Square ID  
VV  
Grid Zone Designation  
15S



CONTOUR INTERVAL 40 FEET  
NORTH AMERICAN VERTICAL DATUM OF 1988  
This map was produced to conform with version 0.5.10  
of the USGS US Topo Product Standard.  
A metadata file associated with this product is draft version 0.5.16



Jasper	Hasty	Western Grove
Parthenon	Mount Judea	Eads
Deer	Larton	Moore

ROAD CLASSIFICATION  
Interstate Route  
US Route  
Ramp  
State Route  
Local Road  
4WD  
Check with local Forest Service unit  
for current travel conditions and restrictions.

MOUNT JUDEA, AR  
2011