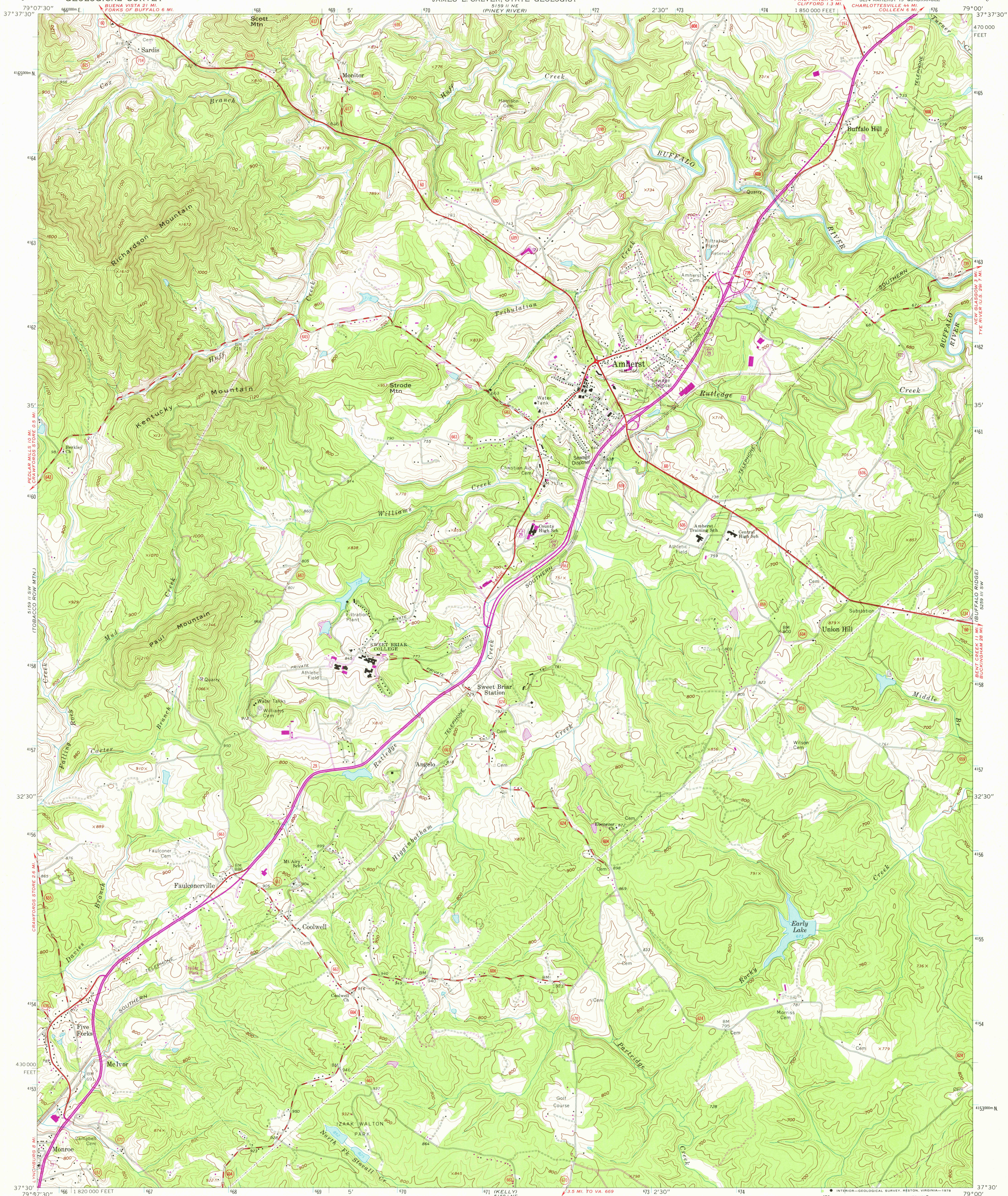


UNITED STATES
DEPARTMENT OF THE INTERIOR
GEOLOGICAL SURVEY

COMMONWEALTH OF VIRGINIA
DIVISION OF MINERAL RESOURCES
JAMES L. CALVER, STATE GEOLOGIST

AMHERST QUADRANGLE
VIRGINIA—AMHERST CO.
7.5 MINUTE SERIES (TOPOGRAPHIC)



Maped, edited, and published by the Geological Survey

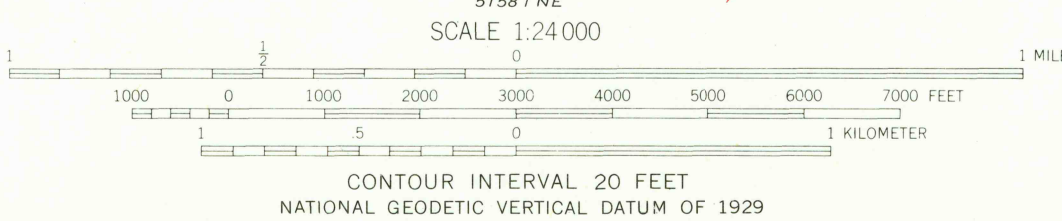
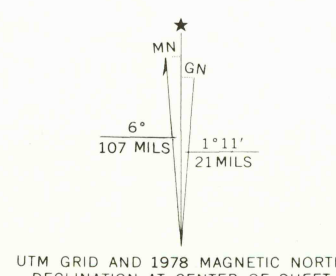
Control by USGS and USC&GS

Topography by photogrammetric methods from aerial photographs taken 1962. Field checked 1963

Polyconic projection. 1927 North American datum 10,000-foot grid based on Virginia coordinate system, south zone 1000-meter Universal Transverse Mercator grid ticks, zone 17, shown in blue

Fine red dashed lines indicate selected fence and field lines where generally visible on aerial photographs. This information is unchecked

Revisions shown in purple compiled in cooperation with Commonwealth of Virginia agencies from aerial photographs taken 1977 and other source data. This information not field checked. Map edited 1978



ROAD CLASSIFICATION	
Heavy-duty	Light-duty
Medium-duty	Unimproved dirt
U.S. Route	State Route

USGS
Historical File
Topographic Division

AMHERST, VA.
SE/4 AMHERST 15 QUADRANGLE
N3730—W7900/7.5

1963
PHOTOREVISED 1978
AMS 5159 II SE—SERIES V834

MAR 14 1979