

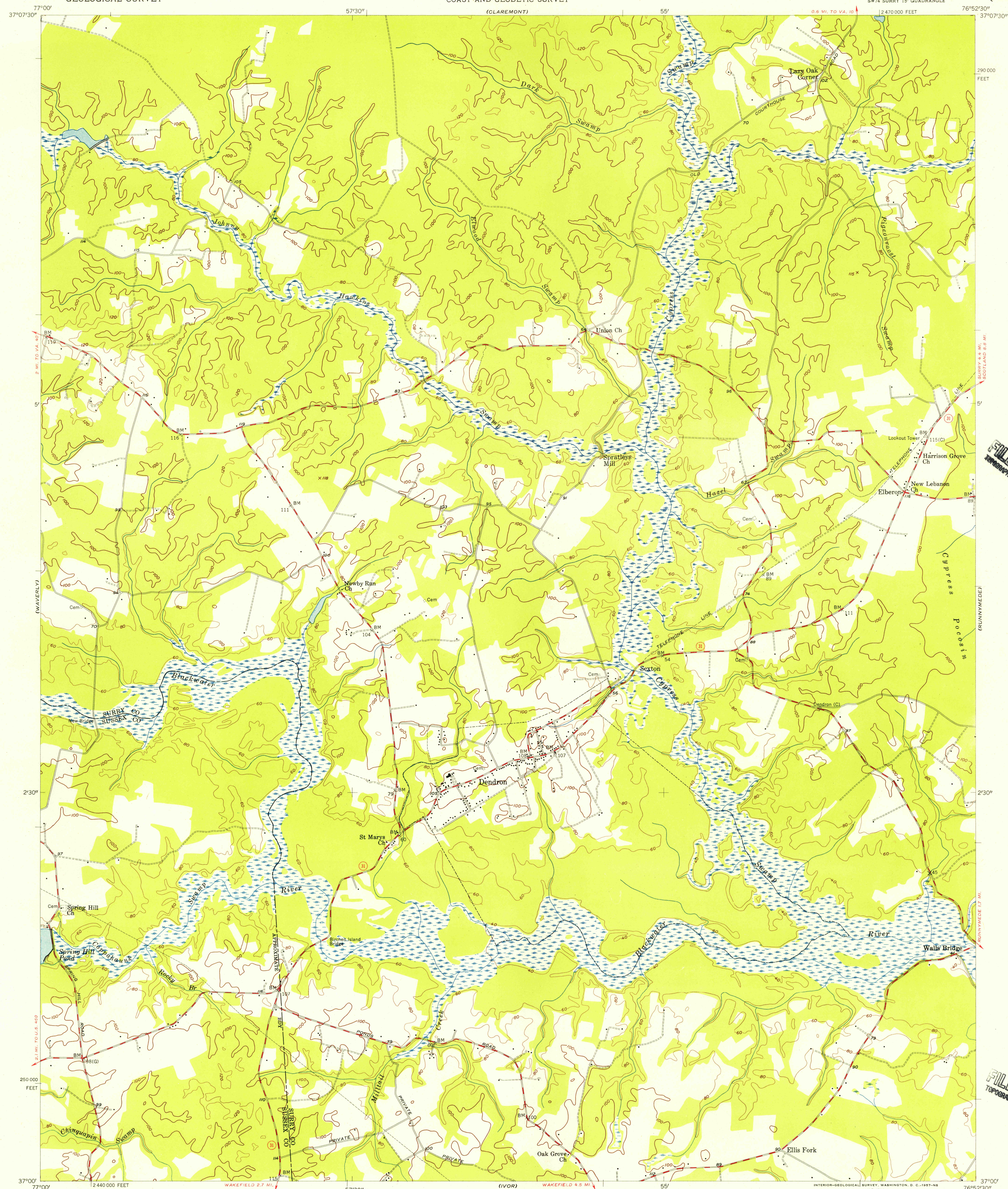
(SAYRE)

UNITED STATES  
DEPARTMENT OF THE INTERIOR  
GEOLOGICAL SURVEY

UNITED STATES  
DEPARTMENT OF COMMERCE  
COAST AND GEODETIC SURVEY

DENDRON QUADRANGLE  
VIRGINIA  
7.5 MINUTE SERIES (TOPOGRAPHIC)  
SW 1/4 SURRY 15' QUADRANGLE

(SURRY)

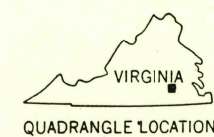
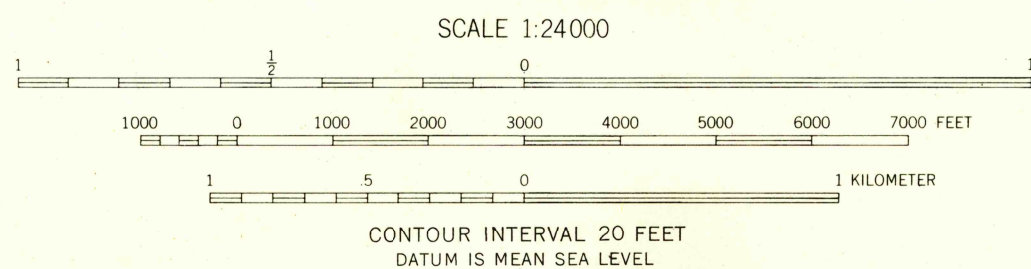


U.S.G.S.  
FILE COPY  
TOPOGRAPHIC DIVISION

U.S.G.S.  
FILE COPY  
TOPOGRAPHIC DIVISION

Mapped by U. S. Coast and Geodetic Survey  
Edited and published by the Geological Survey  
Control by USC&GS(C) and USGS(G)  
Topography from aerial photographs by photogrammetric  
methods. Aerial photographs taken 1952. Field check 1954  
Polyconic projection. 1927 North American datum  
10,000-foot grid based on Virginia coordinate system,  
south zone  
Unchecked elevations are shown in brown

TRUE NORTH  
MAGNETIC NORTH  
APPROXIMATE MEAN  
DECLINATION, 1954



USGS  
Historical File  
Topographic Division

DENDRON, VA.  
SW 1/4 SURRY 15' QUADRANGLE  
N 3700—W 7652.5/7.5

1954

MAR 7 1957  
2635