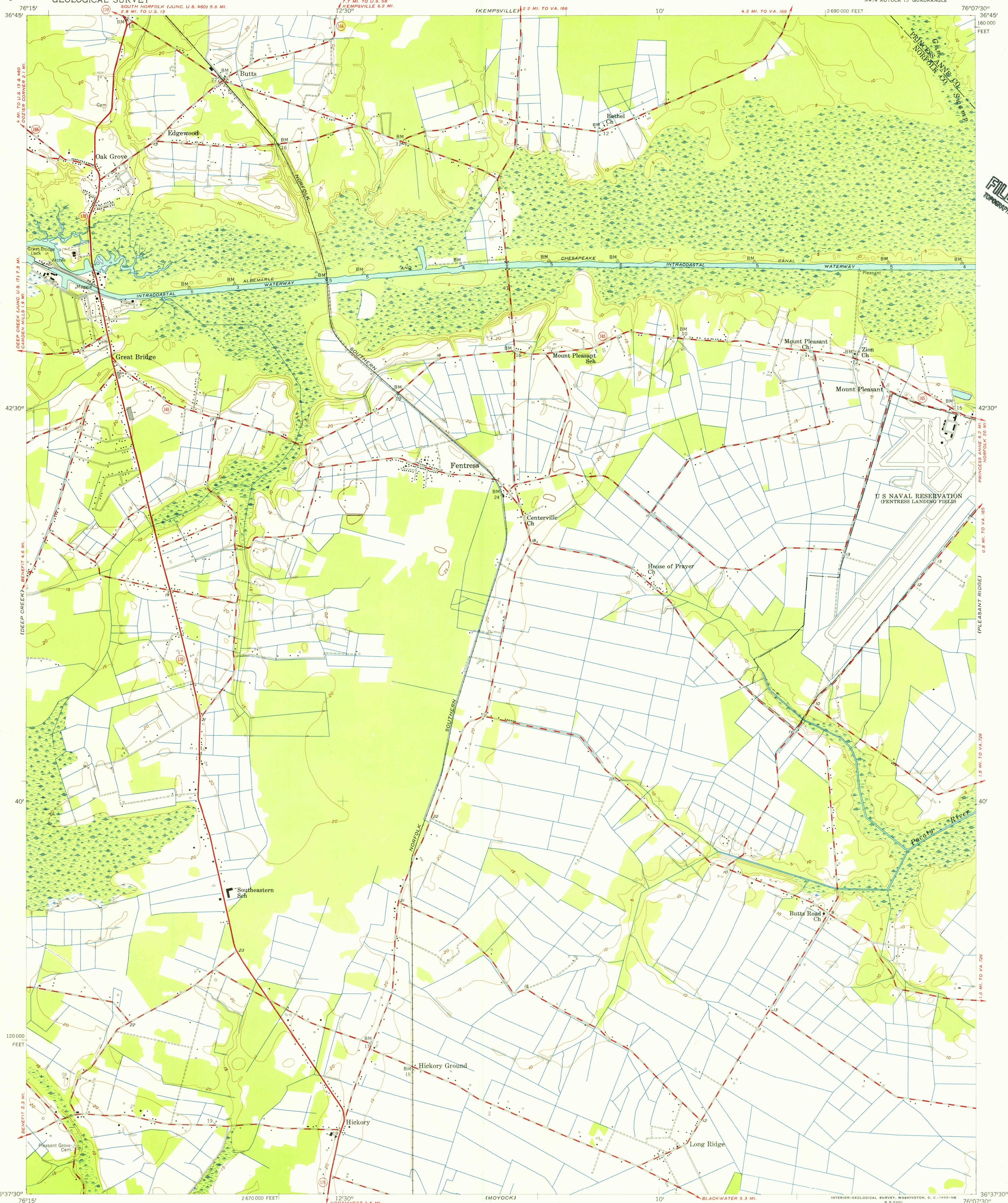


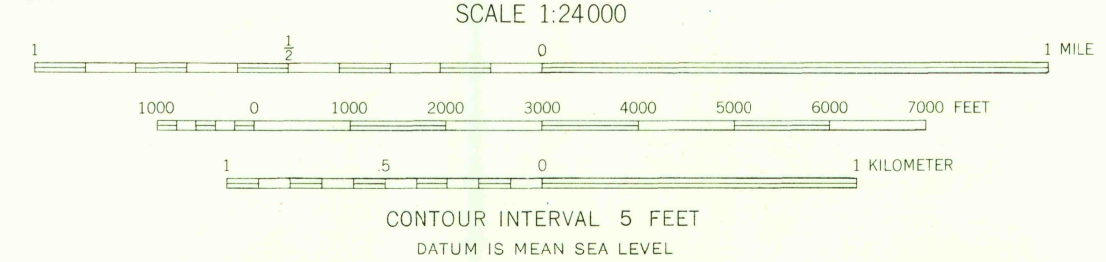
UNITED STATES
DEPARTMENT OF THE INTERIOR
GEOLOGICAL SURVEY

FENTRESS QUADRANGLE
VIRGINIA
7.5 MINUTE SERIES (TOPOGRAPHIC)
NW 1/4 MOYOCK 15' QUADRANGLE

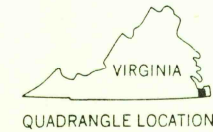


Mapped, edited, and published by the Geological Survey
Control by USGS, USC&GS, and USCE
Culture and drainage in part compiled from aerial photographs
taken 1953. Topography enlarged from 1:62 500 scale map of
Moyock quadrangle, 15 minute series. Original map by planetable
surveys 1938-1939. Revised 1954
Polyconic projection. 1927 North American datum
10,000-foot grid based on Virginia coordinate system,
south zone

61°
TRUE NORTH
MAGNETIC NORTH
APPROXIMATE MEAN
DECLINATION, 1954



USGS
Historical File
Topographic Division



ROAD CLASSIFICATION
Heavy-duty ——— Light-duty ———
Medium-duty ——— Unimproved dirt ———
U.S. Route ——— State Route ———

U.S.G.S.
FILE COPY
TOPOGRAPHIC DIVISION

FENTRESS, VA.
NW 1/4 MOYOCK 15' QUADRANGLE
N 36°37'5" W 76°07'30"

1954

MAR 2 1956

2545